



Finding the Host ID of your SolidWorks license server:

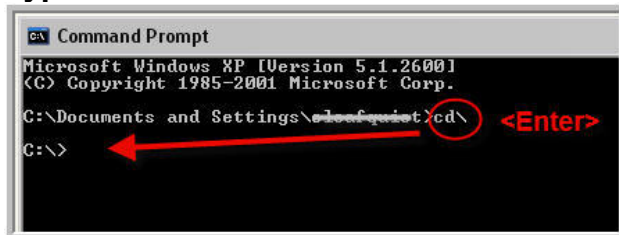
This is also known as the MAC address or the Physical Address.
The fastest way to find this on any of the Microsoft operating systems used with SolidWorks is to use the Command Prompt.

Start > All Programs > Accessories > Command Prompt

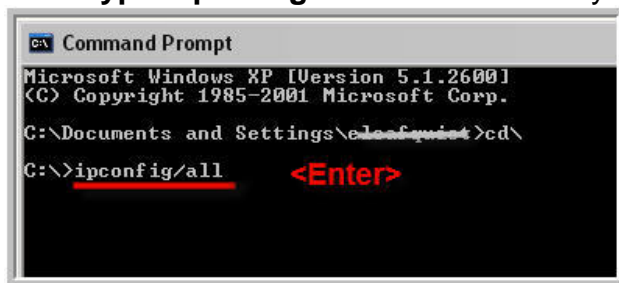
You should see the following (with your user name listed):



Type: `cd\` <then Enter>



Then type: `ipconfig/all` <then Enter> you should see:



```
Command Prompt
Microsoft Windows XP [Version 5.1.2600]
(C) Copyright 1985-2001 Microsoft Corp.

C:\Documents and Settings\c...>cd\
C:\>ipconfig/all

Windows IP Configuration

Host Name . . . . . : MWT-ELEAP03-SHW
Primary Dns Suffix . . . . . : solidworks.com
Node Type . . . . . : Hybrid
IP Routing Enabled. . . . . : No
WINS Proxy Enabled. . . . . : No
DNS Suffix Search List. . . . . : solidworks.com
                                   dsee.ds
                                   ds
                                   dsy.ds
                                   dsa.ds

Ethernet adapter Local Area Connection:

Connection-specific DNS Suffix . : solidworks.com
Description . . . . . : Broadcom NetXtreme 57xx Gigabit Cont
roller
Physical Address. . . . . : 00-19-B9-18-37-8F
Dhcp Enabled. . . . . : Yes
Autoconfiguration Enabled . . . . . : Yes
IP Address. . . . . : 10.100.00.000
Subnet Mask . . . . . : 255.255.255.0
Default Gateway . . . . . : 10.100.00.1
DHCP Server . . . . . : 10.100.00.1
DNS Servers . . . . . : 10.100.00.1
                                   10.100.00.1
Primary WINS Server . . . . . : 10.100.00.1
Secondary WINS Server . . . . . : 10.100.00.1
Lease Obtained. . . . . : Monday, April 14, 2008 7:00:20 AM
Lease Expires . . . . . : Monday, April 21, 2008 7:00:20 AM

C:\>
```

Please write down the series of 12 numbers and letters shown next to “Physical Address” (do not include the dashes shown).

This series of characters is what you enter next to “Host ID” when you request your network license file.