

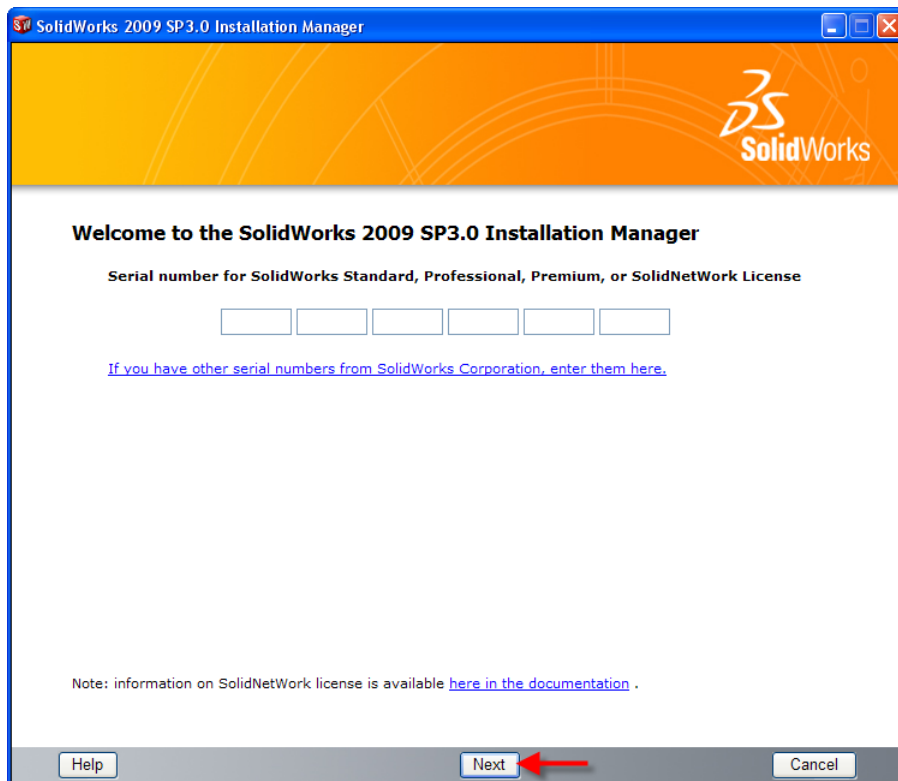
SolidWorks® Student Design Kit 2009-2010 Installation Instructions

Notes:

- Before beginning the installation process, please be sure to close out of all SolidWorks programs currently open on your computer.
- You will need to be connected to the internet during the entire installation & activation of the software.

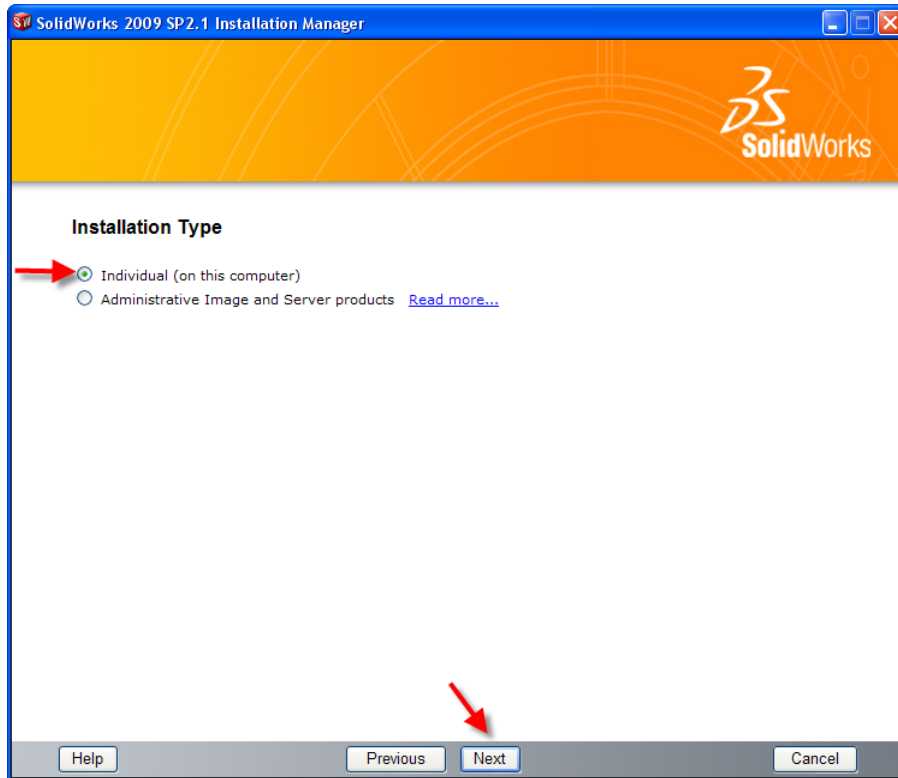
1. Insert DVD into the computer and enter your 24 digit serial number. Click **Next**.

Downloading .exe file via website: if you are downloading the .exe file (**file name sldimdist.exe**) via the website for installation, click the appropriate link to begin the download of the .exe file. Once the .exe file is saved on your computer, double click the .exe file and then you will be prompted to enter your 24 digit serial number. Click **Next**.

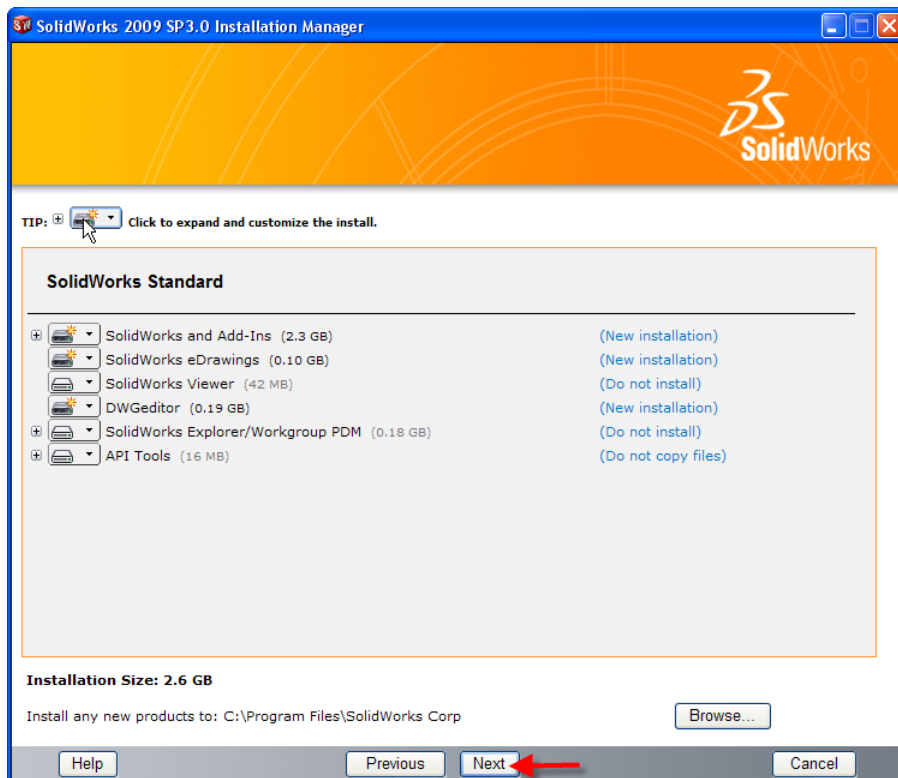


Note: Installing SolidWorks will also install SolidWorks® Simulation Xpress products automatically. You do not have to re-install SolidWorks® SimulationXpress after the SolidWorks installation is complete.

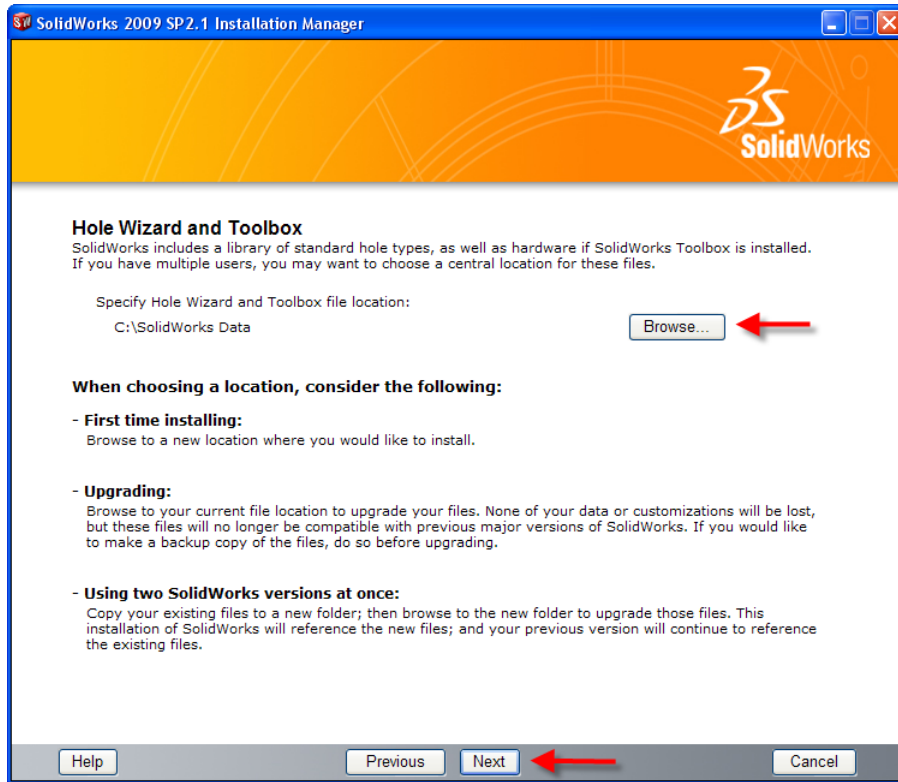
2. Select **Individual** installation type, click **Next**.



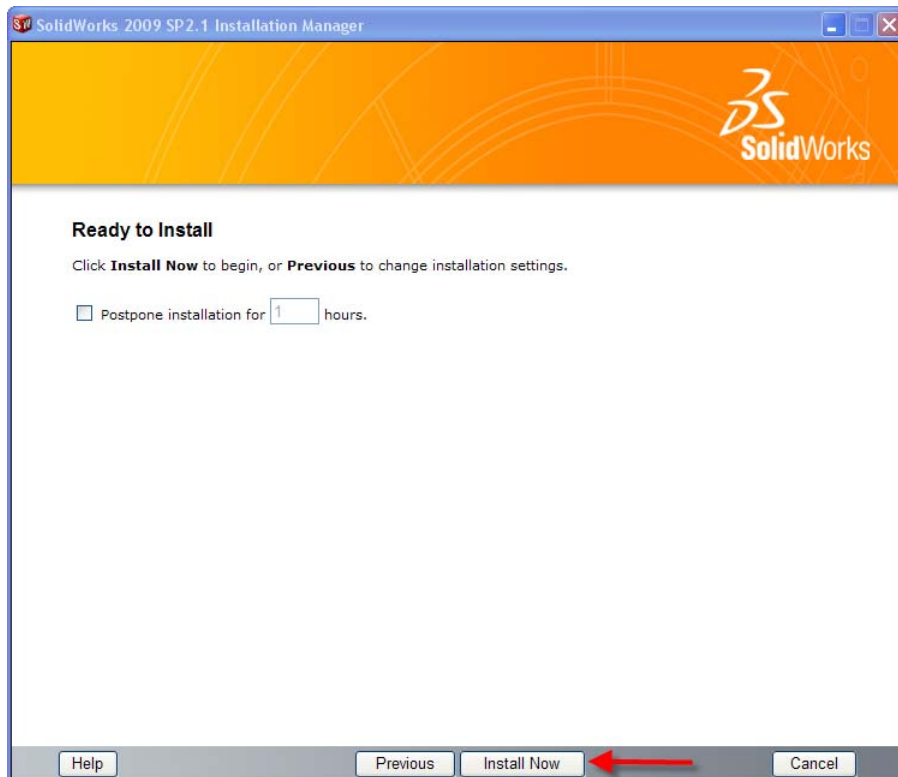
3. After you have clicked Next, the SolidWorks Setup Wizard will guide you through the installation. **Accept Defaults** on the screen (**DO NOT change defaults**). Click **Next** to continue installation.



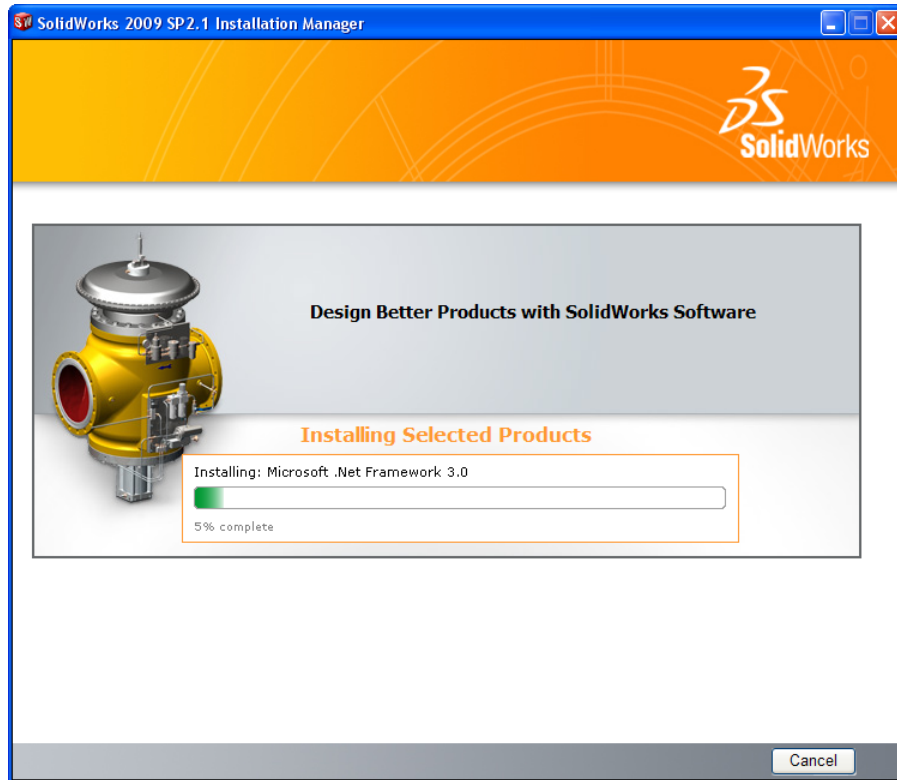
4. **Browse** to the location where you would like to save all **Standard Library Files**. Read the descriptions within the image below for new users, existing customers and multi-version software use for more details. Once location is selected, click **Next**.



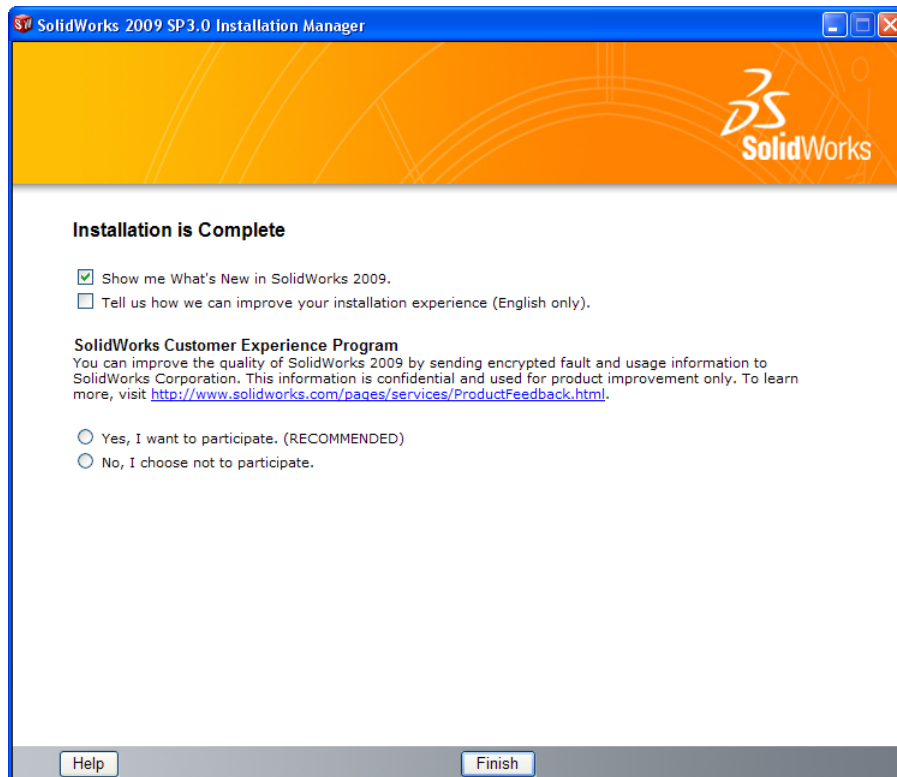
5. Ready to Install, click **Install Now**



Installation Screen:



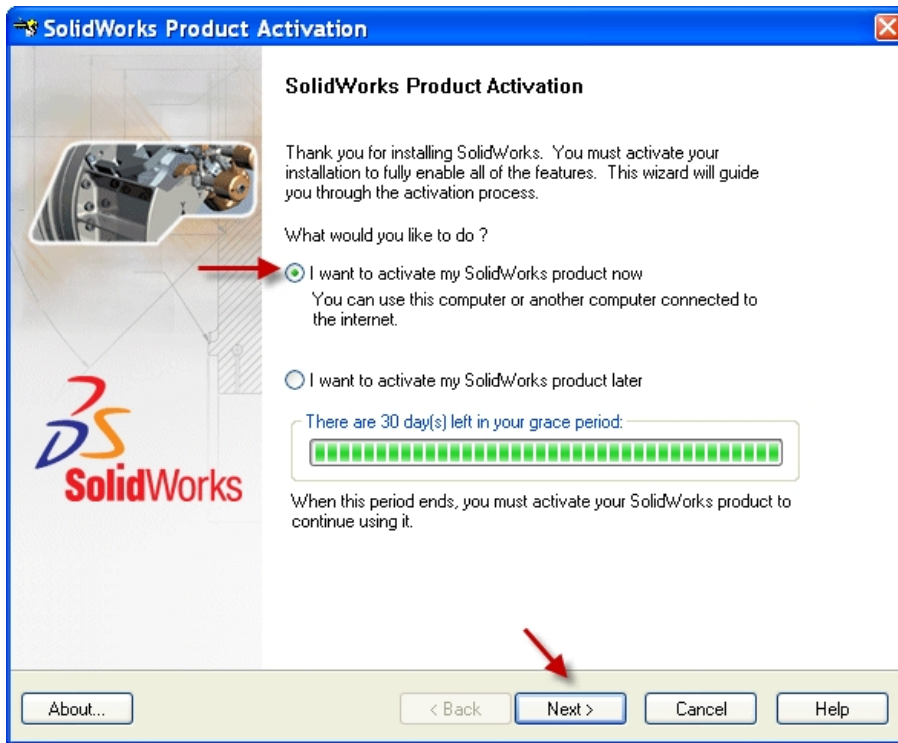
6. Installation is Complete! Select how often you would like to receive product updates, confirm your participation in a brief survey. Finally, click **Finish**.



Note: Depending upon your computer configuration you may or may not need to restart your computer.

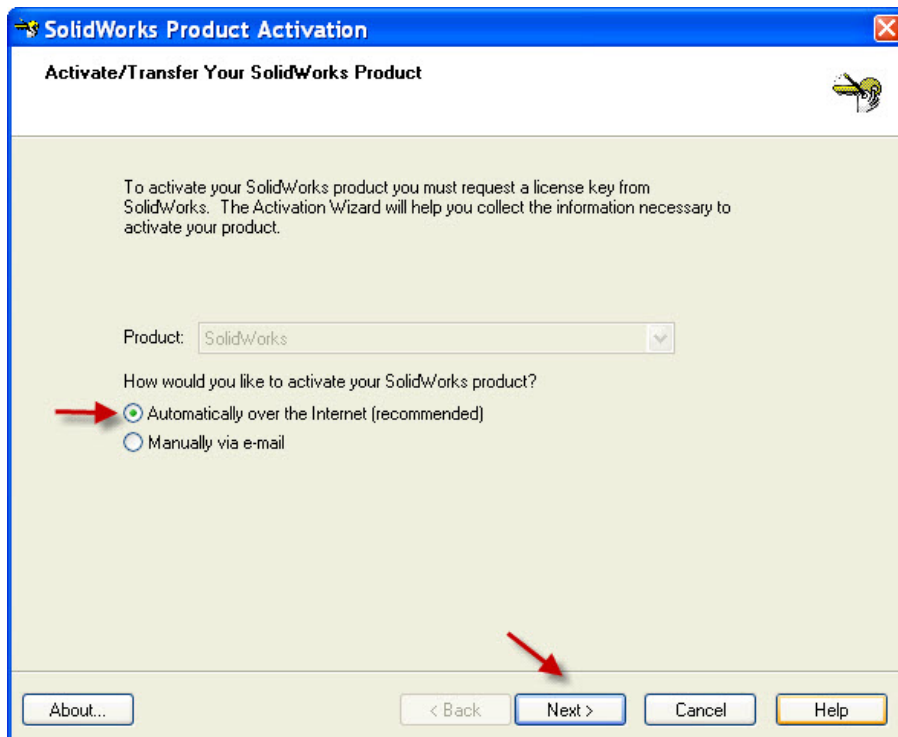
Installing SolidWorks will also install SolidWorks® SimulationXpress products automatically. You do not have to re-install SolidWorks® SimulationXpress after the SolidWorks installation is complete.

7. Once the installation has completed, click on the SolidWorks SP3.0 Icon on your desktop to begin the program. You will now be prompted to activate your software. Select, **“I want to activate my SolidWorks Product Now”** and click **Next**.

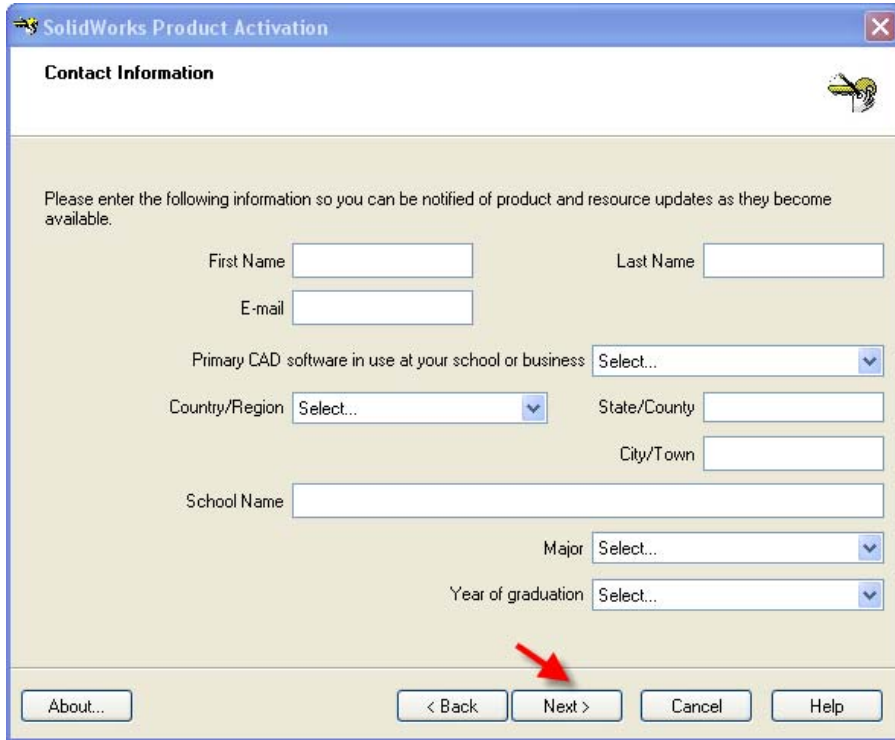


8. Now, select how you would like to activate your SolidWorks Product. Select **“Automatically over the Internet”** and click **Next**.

Please note: You must be connect to the internet to activate the software.



9. Fill out the required contact information fields and click **Next**.



SolidWorks Product Activation

Contact Information

Please enter the following information so you can be notified of product and resource updates as they become available.

First Name Last Name

E-mail

Primary CAD software in use at your school or business

Country/Region State/County

City/Town

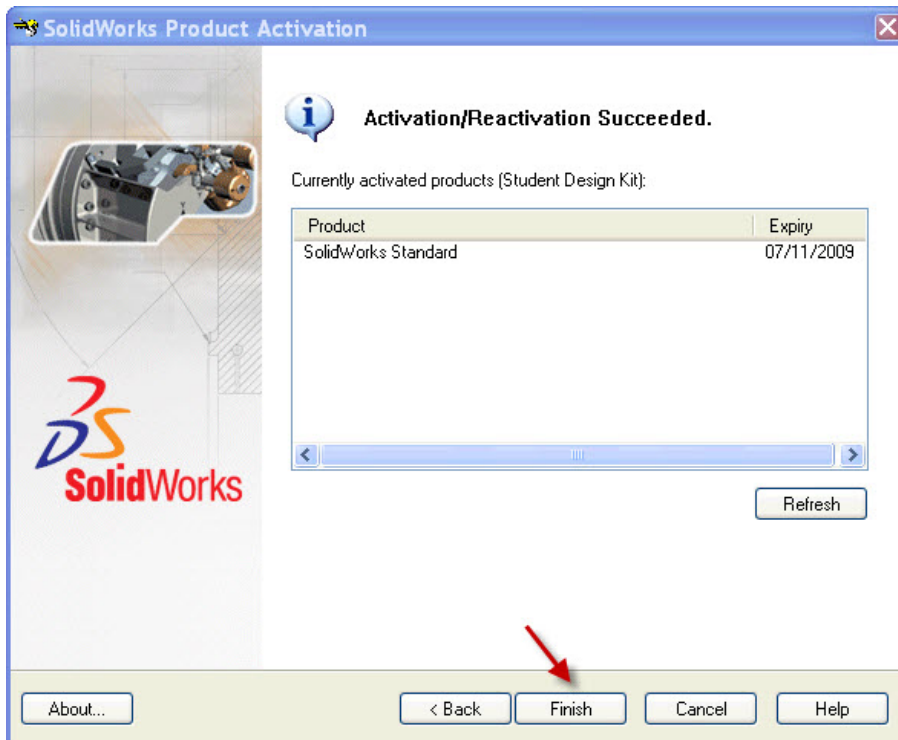
School Name

Major

Year of graduation

Buttons: About... < Back **Next >** Cancel Help

10. Your software activation is now complete. Click **Finish**.



SolidWorks Product Activation

Activation/Reactivation Succeeded.

Currently activated products (Student Design Kit):

Product	Expiry
SolidWorks Standard	07/11/2009

Buttons: About... < Back **Finish** Cancel Help

**YOU CAN NOW USING YOUR
SOLIDWORKS® STUDENT DESIGN KIT!**