

# SOLIDWORKS

CERTIFIED PARTNER PRODUCTS



## **INTEGRATED. ASSOCIATIVE. CERTIFIED.**

Get the power you need to finish the job right with SOLIDWORKS® Certified Partner Products.

From knowledge-based engineering (KBE) and mold design software solutions to computer-aided manufacturing (CAM) tools—you'll have everything you need to get your products to market faster.

### **Integrated**

Data export just got easier. A lot easier. With single-window integration, all the tools you need work together using the same design data. Which means you can work directly in the native SOLIDWORKS environment, instead of exporting models to a standalone product. And with our Certified Partner Products, you can take advantage of unique SOLIDWORKS capabilities like Configurations, PropertyManager, and the FeatureManager® design tree.

### **Associative**

Like SOLIDWORKS software, Certified Partner Products are fully associative. When you make design changes, they update data automatically or warn you that additional changes are necessary. So you can be sure that your data is always in sync. Always.

### **Certified**

Our certification team rigorously evaluates all of our Certified Partner Products, making sure they comply with SOLIDWORKS standards. So you can rest assured that they will look and feel like SOLIDWORKS and work with each new SOLIDWORKS release.

We're always evaluating new solutions for our Certified Partner Products. Visit [www.solidworks.com](http://www.solidworks.com) and the Partner Products area for an up-to-date listing.

# CONTENTS

## CERTIFIED GOLD PARTNERS

|  |    |
|--|----|
| CAM .....                                | 2  |
| Component/Content .....                  | 4  |
| Data Interoperability .....              | 5  |
| Design/Drafting .....                    | 6  |
| ERP .....                                | 7  |
| FEA .....                                | 8  |
| KBE/Design Automation .....              | 9  |
| Mold and Die Design .....                | 10 |
| Optical Design and Analysis .....        | 12 |
| PDM .....                                | 12 |
| Piping and HVAC .....                    | 14 |
| PLM .....                                | 14 |
| PLM Integration .....                    | 15 |
| Reverse Engineering and Inspection ..... | 15 |
| Sheet-Metal Fabrication .....            | 17 |
| Steel Design .....                       | 19 |
| Tolerance Analysis .....                 | 19 |

## CERTIFIED CAM PARTNERS

|           |    |
|-----------|----|
| CAM ..... | 20 |
|-----------|----|

## CERTIFIED GOLD PARTNERS – CAM



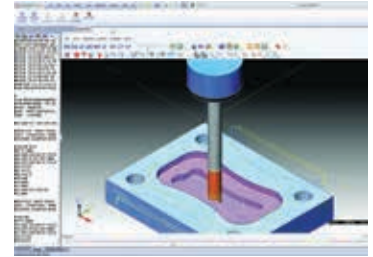
### **BOBCAD-CAM, INC.**

#### **BobCAD-CAM for SOLIDWORKS**

28200 U.S. Highway 19  
N. Clearwater, FL 33761

727 442 3554

[chris@bobcad.com](mailto:chris@bobcad.com)  
<http://www.bobcad.com>



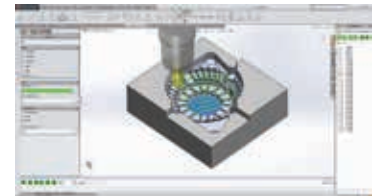
### **C&G SYSTEMS INC.**

#### **CG CAM-TOOL**

Tennoz Central Tower 19F  
2-2-24 Higashi-Shinagawa, Shinagawa-ku  
Tokyo, TOKYO 140-0002  
Japan

+81 3 6864 0784

<http://www.cgsys.co.jp/en/index.html>  
[info\\_cg\\_camtool@cgsys.co.jp](mailto:info_cg_camtool@cgsys.co.jp)



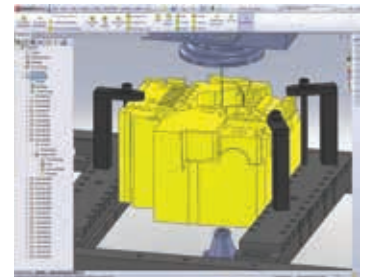
### **CAMTEK GMBH**

#### **OPTICAM**

Werkstrasse 24  
Weinstadt, BW 71384  
Germany

+ 497151979202

[Melanie.Staib@Camtek.de](mailto:Melanie.Staib@Camtek.de)  
<http://www.camtek.de>



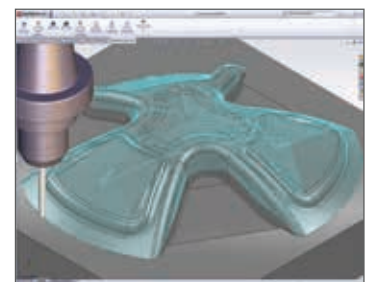
### **CNC SOFTWARE INC.**

#### **Mastercam® for SOLIDWORKS**

671 Old Post Road  
Tolland, CT 06084

860 875 5006

[mcinfo@mastercam.com](mailto:mcinfo@mastercam.com)  
<http://www.mastercam.com>



## CERTIFIED GOLD PARTNERS – CAM



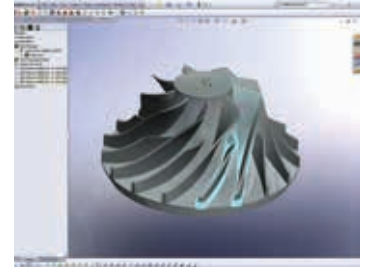
### GEOMETRIC TECHNOLOGIES, INC.

#### CAMWorks

16121 N. 78th Street  
Suite 101  
Scottsdale, AZ 8520

480 367 0132 ext. 5

[inquiries@camworks.com](mailto:inquiries@camworks.com)  
<http://www.camworks.com>



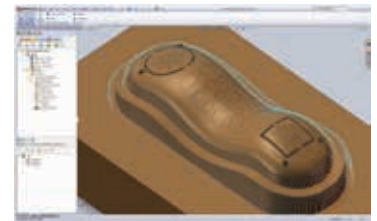
### MECSOFT CORPORATION

#### VisualMILL for SOLIDWORKS

18019 Sky Park Circle  
Suite K-L  
Irvine, CA 92614

949 654 8163

[sales@mecsoft.com](mailto:sales@mecsoft.com)  
<http://www.visualmillforsolidworks.com>



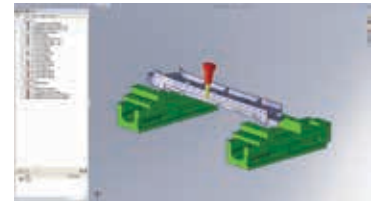
### OPEN MIND TECHNOLOGIES AG

#### hyperMILL for SOLIDWORKS

Argelsrieder Feld 5  
82234 Wessling  
Germany

+49 8153 933 500

[info@openmind-tech.com](mailto:info@openmind-tech.com)  
<http://www.openmind-tech.com>



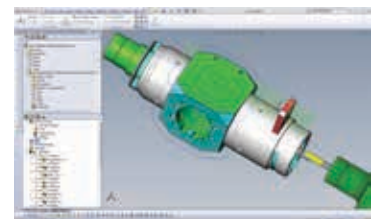
### SOLIDCAM LTD.

#### SolidCAM

33 Kaplan Street  
Or-Yehuda 60305  
Israel

+972 3 5333150

[emil.somekh@solidcam.com](mailto:emil.somekh@solidcam.com)  
<http://www.solidcam.com>



## CERTIFIED GOLD PARTNERS – COMPONENT/CONTENT



### **CADPARTS, INC.**

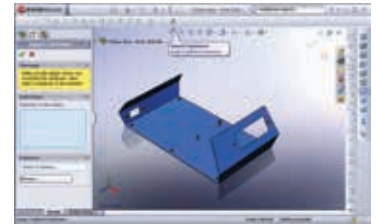
#### **CadParts Fastener Library**

1041 East 1420 North  
American Fork, UT 84003

801 376 5307

[sales@cadparts.com](mailto:sales@cadparts.com)

<http://www.cadparts.com>



### **LOGOPRESS**

#### **123GO**

ZA Les Salines  
Pouilly Les Vignes, 25115  
France

+333 81 60 23 60

[info@logopress3.com](mailto:info@logopress3.com)

<http://www.logopress3.com>



### **SOLIDPARTNERS, INC.**

#### **SolidParts™**

1585 62nd Street  
Suite 99825  
Emeryville, CA 94608

1 800 605 3831

[sales@solidpartners.com](mailto:sales@solidpartners.com)

<http://www.solidpartners.com>



## CERTIFIED GOLD PARTNERS – DATA INTEROPERABILITY



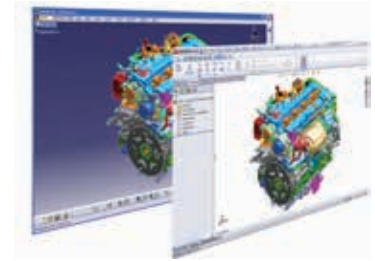
### CAPVIDIA NV

#### FormatWorks

Research Park Haasrode  
Technologielaan 3  
B-3001 Leuven  
Belgium

Europe: +32 16 40 27 47  
USA: 507 794 5447

[info@capvidia.be](mailto:info@capvidia.be)  
<http://www.capvidia.com>



### DATAKIT

#### CrossCAD/Plg: Catia V5 3D to SOLIDWORKS

6, place des terreaux  
F-69001 Lyon  
France

+33 478 396 369

[cadin@datakit.com](mailto:cadin@datakit.com)  
<http://www.datakit.com>



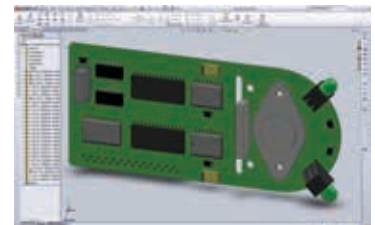
### DESKTOP EDA

#### SOLIDWORKS IDF Modeler

Suite 26  
2 Park Drive  
Bundoora VIC 3083  
Australia

+ 61 3 9455 2289

[info@desktop-eda.com.au](mailto:info@desktop-eda.com.au)  
<http://www.desktop-eda.com.au>



### TRANSMAGIC, INC.

#### TransMagic PowerPack for SOLIDWORKS

11859 Pecos Street  
Suite 310  
Westminster, CO 80234

303 460 1406

[info@transmagic.com](mailto:info@transmagic.com)  
<http://www.transmagic.com>



## CERTIFIED GOLD PARTNERS – DESIGN/DRAFTING



### ATR SOFT OY

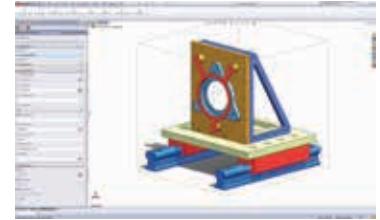
#### CustomTools

Joukahaisenkatu 1  
20520 TURKU  
Finland

+358 (0)2 2839 020

[info@customtools.info](mailto:info@customtools.info)

<http://www.customtools.info>



### CAD/CAM COMPONENTS

#### GeometryWorks3D

31878 Del Obispo #118-332  
San Juan Capistrano, CA 92675

949 728 1309

[bob\\_jones@cadcamcomponents.com](mailto:bob_jones@cadcamcomponents.com)

<http://www.cadcamcomponents.com>



### NPOWER SOFTWARE

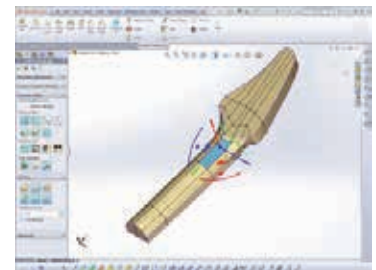
#### Power Surfacing

13064 Trail Dust Avenue  
San Diego, CA 92129

858-538-3800

[DGill@nPowerSoftware.com](mailto:DGill@nPowerSoftware.com)

<http://www.npowersoftware.com>



## ToolWorks

### SDH DEVELOPMENT

#### ToolWorks BOM Manager

Langebjergvaenget 4  
4000 Roskilde  
Denmark

+45 70 22 22 80

[info@toolworks.info](mailto:info@toolworks.info)

<https://www.toolworks.info>





## CERTIFIED GOLD PARTNERS – DESIGN/DRAFTING



### TRI D TECHNOLOGIES INC.

#### ExactFlat Pro

300 New Toronto Street - Unit 29  
Toronto, Ontario M8V 2E8  
Canada

877 977 7776

[sales@exactflat.com](mailto:sales@exactflat.com)  
<http://www.exactflat.com>



## CERTIFIED GOLD PARTNERS – ERP



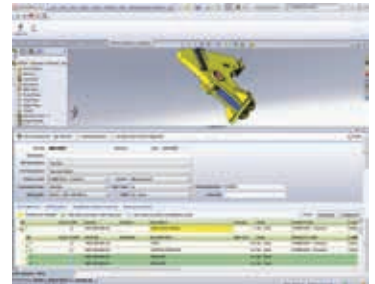
### QBUILD CORPORATION

#### CADLink for SOLIDWORKS

145 Renfrew Drive  
Unit 140  
Markham, Ontario L3R 9R6  
Canada

905 479 7811

[info@qbuildsoftware.com](mailto:info@qbuildsoftware.com)  
<http://www.qbuildsoftware.com>



## CERTIFIED GOLD PARTNERS – FEA



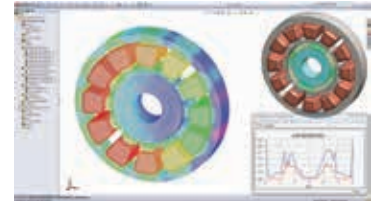
### **ELECTROMAGNETICWORKS, INC.**

#### **EMS**

8300 St-Patrick Street  
Suite 300  
Montreal, QC, H8N 2H1  
Canada

USA & Canada: 1 800 397 1557  
International: +1 514 634 9797

[info@emworks.com](mailto:info@emworks.com)  
<http://www.emworks.com>



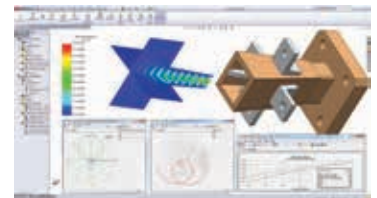
### **ELECTROMAGNETICWORKS, INC.**

#### **HFWorks**

8300 St-Patrick Street  
Suite 300  
Montreal, QC, H8N 2H1  
Canada

USA & Canada: 1 800 397 1557  
International: +1 514 634 9797

[info@emworks.com](mailto:info@emworks.com)  
<http://www.emworks.com>



## CERTIFIED GOLD PARTNERS – KBE/DESIGN AUTOMATION



### **DRIVEWORKS LTD.**

#### **DriveWorks, DriveWorksXpress**

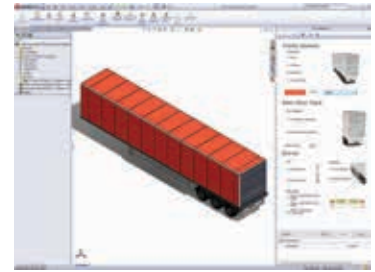
The Barley Store  
Laskey Farm, Laskey Lane  
Thelwall, Cheshire WA4 2TF  
United Kingdom

UK: +44 1925 75 75 85

USA: 978 633 3230

[info@driveworks.co.uk](mailto:info@driveworks.co.uk)

<http://www.driveworks.co.uk>



### **DRIVEWORKS LTD.**

#### **DriveWorks Solo**

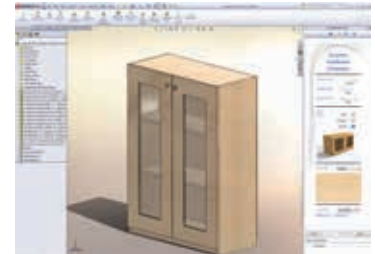
The Barley Store  
Laskey Farm, Laskey Lane  
Thelwall, Cheshire WA4 2TF  
United Kingdom

UK: +44 1925 75 75 85

USA: 978 633 3230

[info@driveworks.co.uk](mailto:info@driveworks.co.uk)

<http://www.driveworks.co.uk>



### **MARK DESIGN SOLUTIONS PVT. LTD.**

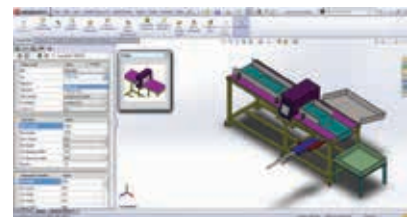
#### **CADECplus**

266 Navi Peth, Ksheerada Building  
L B Shastri Road  
Pune, Maharashtra 411030  
India

+91 20 64011848

[info@markengg.com](mailto:info@markengg.com)

<http://www.cadec.in>



### **TACTON SYSTEMS AB**

#### **TactonWorks**

Kungsgatan 71  
SE-112 27 Stockholm  
Sweden

Sweden: +46 8 690 07 50

USA: 847 868 4730

[info@tacton.com](mailto:info@tacton.com)

<http://www.tacton.com>



## CERTIFIED GOLD PARTNERS – MOLD AND DIE DESIGN



### 3D QUICKTOOLS LIMITED

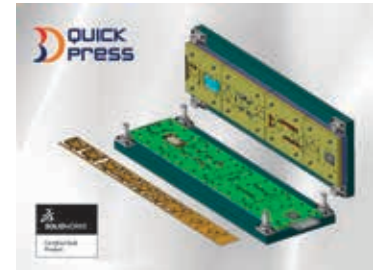
#### 3DQuickPress

Unit 1711, Grand City Plaza  
No. 1-17 Sai Lau Kok Road  
Tsuen Wan, N.T.  
Hong Kong

+852 2788 2832

[info@3dquickpress.com](mailto:info@3dquickpress.com)

<http://www.3dquicktools.com>



### C&G SYSTEMS INC.

#### CG PressDesign

Tennoz Central Tower 19F  
2-2-24 Higashi-Shinagawa, Shinagawa-ku  
Tokyo, TOKYO 140-0002  
Japan

+81 3 6864 0784

Email: [info\\_cg\\_camtool@cgsys.co.jp](mailto:info_cg_camtool@cgsys.co.jp)

Web: <http://www.cgsys.co.jp/en/index.html>



### CAPVIDIA NV

#### FaceWorks

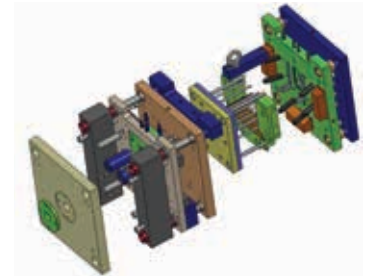
Research Park Haasrode  
Technologielaan 3  
B-3001 Leuven  
Belgium

Europe: +32 16 40 27 47

USA: 507 794 5447

[info@capvidia.be](mailto:info@capvidia.be)

<http://www.capvidia.com>



### LOGOPRESS

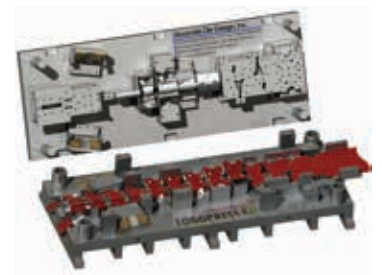
#### Logopress3

ZA Les Salines  
Pouilley Les Vignes, 25115  
France

+333 81 60 23 60

[info@logopress3.com](mailto:info@logopress3.com)

<http://www.logopress3.com>



## CERTIFIED GOLD PARTNERS – MOLD AND DIE DESIGN



### MANUSOFT TECHNOLOGIES PTE LTD

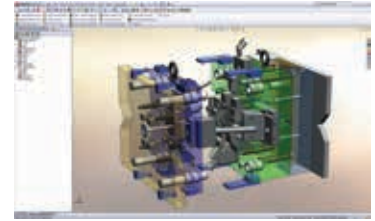
#### IMOLD for SOLIDWORKS

21 Science Park Road  
#03-04 The Aquarius  
Singapore Science Park II  
Singapore 117628

+65 67751565

[info@imold.com](mailto:info@imold.com)

<http://www.imold.com>



### R&B MOLD & DIE DESIGN

#### ElectrodeWorks

32 Shaham Street  
P.O. Box 7005  
Petah Tikva, 49170  
Israel

Israel: +972 3 9233522

USA: 1 800 844 3589

[marketing@rnb.co.il](mailto:marketing@rnb.co.il)

<http://www.rnbusa.com>



### R&B MOLD & DIE DESIGN

#### MoldWorks

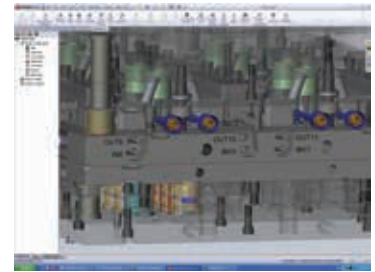
32 Shaham Street  
P.O. Box 7005  
Petah Tikva, 49170  
Israel

Israel: +972 3 9233522

USA: 1 800 844 3589

[marketing@rnb.co.il](mailto:marketing@rnb.co.il)

<http://www.rnbusa.com>



### R&B MOLD & DIE DESIGN

#### SplitWorks

32 Shaham Street  
P.O. Box 7005  
Petah Tikva, 49170  
Israel

Israel: +972 3 9233522

USA: 1 800 844 3589

[marketing@rnb.co.il](mailto:marketing@rnb.co.il)

<http://www.rnbusa.com>



## CERTIFIED GOLD PARTNERS – OPTICAL DESIGN AND ANALYSIS



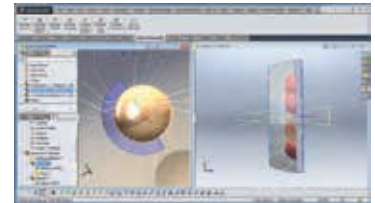
### BREAULT RESEARCH ORGANIZATION

#### APEX

6400 E Grant Road - Suite 350  
Tucson, AZ 85715  
United States

520 721 0500

[info@breault.com](mailto:info@breault.com)  
<http://www.breault.com>



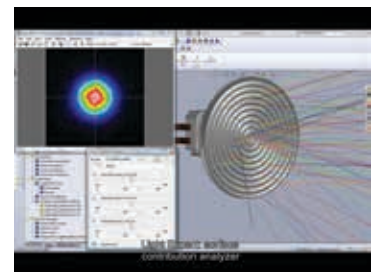
### OPTIS

#### OptisWorks™

Zone d'Entreprises de La Farlède  
60 Rue Parmentier  
83210 La Farlède  
France

+33 494 086 690

[optis@optis-world.com](mailto:optis@optis-world.com)  
<http://www.optis-world.com>



## CERTIFIED GOLD PARTNERS – PDM



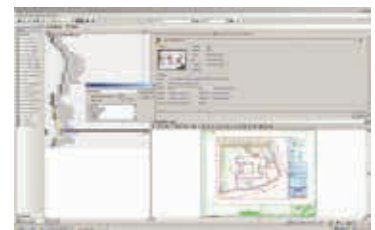
### BLUECIELO ECM SOLUTIONS

#### BlueCielo Product Suite

Handelskade 49  
2288BA Rijswijk  
The Netherlands

+31 (0) 70 413 3700

<http://www.bluecieloecm.com>



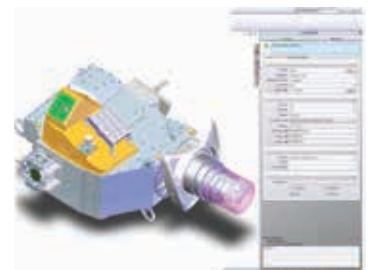
### CADWORKS SOFTWARE OY LTD

#### CustomWorks®

Helsingintie 44  
FIN-04430 Jarvenpaa  
Finland

+358 10 8357 311

[info@cadworkssoftware.com](mailto:info@cadworkssoftware.com)  
<http://www.cadworkssoftware.com>



## CERTIFIED GOLD PARTNERS – PDM

### MaxxDB

#### MAXXDB

Benzstr. 15  
89129 Langenau  
Germany

+49 (0) 7345 9617-0



#### MECHWORKS SRL

##### DBWorks

via Vallescura 8/2  
40136 – Bologna  
Italy

+39 051 582294

[info@mechworks.com](mailto:info@mechworks.com)  
<http://www.mechworks.com>



#### MODULTEK/CADON

##### SolidPDM

Modultek Oy  
Itsenäisyydenkatu 41 A  
Pori, 28100  
Finland

+358 201 6100

[info@cadon.fi](mailto:info@cadon.fi)  
<http://www.solidpdm.com>



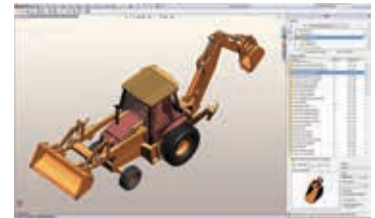
#### SYNERGIS SOFTWARE

##### Adept PDM for SOLIDWORKS

472 California Road  
Quakertown, PA 18951

1 800 836 5440  
215 529 9900

[adept@synergissoftware.com](mailto:adept@synergissoftware.com)  
<http://www.synergissoftware.com>



## CERTIFIED GOLD PARTNERS – PIPING AND HVAC



### CAD PARTNER

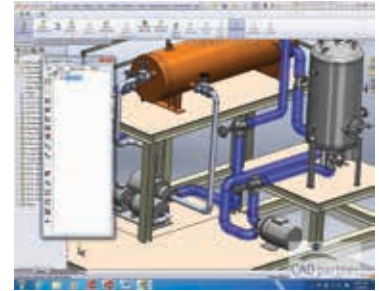
#### Smap3D Plant Design

1153 Lincoln Ave - Suite D  
San Jose, CA 95125  
United States

+1 408 600 0536

[info@Smap3D.com](mailto:info@Smap3D.com)

<http://www.smap3d.com/Piping/en/concept.html>



## CERTIFIED GOLD PARTNERS – PLM



### HCV DATA MANAGEMENT GMBH

#### Porta-X

Am Eichelgarten 1  
Walluf, Hessen 65396  
Germany

+49 (0) 6123 / 99 50-310

[info@hcv.de](mailto:info@hcv.de)

<http://www.hcv.de>



### KEYTECH SOFTWARE GMBH

#### keytech

Suderwichstrasse 68  
45665 Recklinghausen  
Germany

Europe: +49 2361 9 85 80 - 0

USA: 978 270 1516

[info@keytechplm.com](mailto:info@keytechplm.com)

<http://www.keytechplm.com>





## CERTIFIED GOLD PARTNERS – PLM INTEGRATION



### **CIDEON SOFTWARE GMBH** **SAP PLM Integration for SOLIDWORKS**

CIDEON Software GmbH  
Peterstraße 1  
D - 02826 Görlitz  
Germany

+49 (0)3581 3878 - 0

[info@cideon-software.com](mailto:info@cideon-software.com)  
<http://www.cideon-software.com>



### **XPLM SOLUTION GMBH** **SOLIDWORKS Enterprise PDM Integration for ERP\***

Devrientstr. 5  
Dresden, Sachsen 01067  
Germany

+49 351 82658-0

[xplm@xplm.com](mailto:xplm@xplm.com)  
<http://www.xplm.com>



## CERTIFIED GOLD PARTNERS - REVERSE ENGINEERING AND INSPECTION

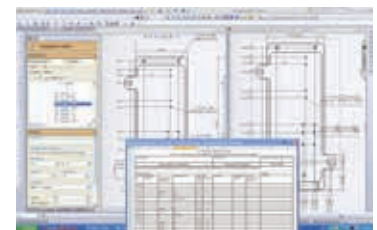


### **ALBITECH LTD** **Inspection Geni**

45 Ehad Ham St  
Herzliya 46385  
Israel

+97 2547 717 258

[dsashkis@albitech.org](mailto:dsashkis@albitech.org)  
<http://www.inspectiongeni.com>



### **CREATIVE DEZIGN CONCEPTS, INC.** **DeZignWorks**

116 Morlake Drive  
Suite 104  
Mooresville, NC 28117

704 660 5100

[info@gocreative.net](mailto:info@gocreative.net)  
<http://www.gocreative.net/>



\*Certified Gold for SOLIDWORKS Enterprise PDM

## CERTIFIED GOLD PARTNERS – REVERSE ENGINEERING AND INSPECTION



### REVERSEENGINEERING.COM

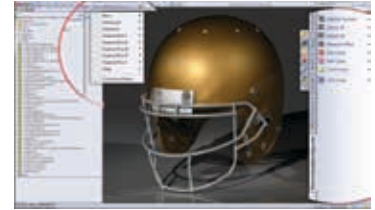
#### HighRes Basic, Advanced and Industrial for SOLIDWORKS

PO Box 2746  
La Jolla, CA 92038

858 488 5231

[sales@reverseengineering.com](mailto:sales@reverseengineering.com)

<http://www.reverseengineering.com>



### REVWARE, INC.

#### RevWorks®

1030 N. Rogers Lane  
Suite 107-46  
Raleigh, NC 27610

919 790 0000

[tomwelsh@revware.net](mailto:tomwelsh@revware.net)

<http://www.revware.net>



## CERTIFIED GOLD PARTNERS – SHEET-METAL FABRICATION



### 3D QUICKTOOLS LIMITED

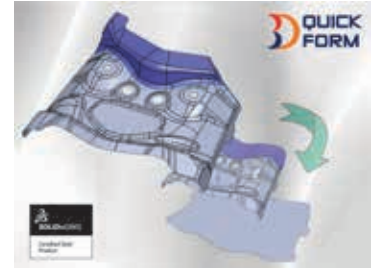
#### 3DQuickForm

Unit 1711, Grand City Plaza  
No. 1-17 Sai Lau Kok Road  
Tsuen Wan, N.T.  
Hong Kong

+852 2788 2832

[info@3dquickpress.com](mailto:info@3dquickpress.com)

<http://www.3dquicktools.com>



### FORMING TECHNOLOGIES, INC.

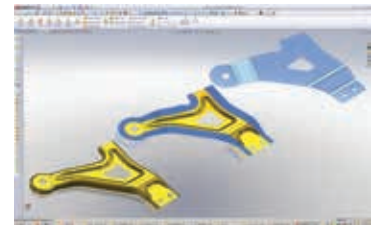
#### BLANKWORKS

Forming Technologies Inc.  
3370 South Service Road  
Burlington, Ontario L7N 3M6  
Canada

905 340 3370

[sales@forming.com](mailto:sales@forming.com)

<http://www.forming.com>



### LOGOPRESS

#### Logopress3F

ZA Les Salines,  
Pouilley Les Vignes, 25115  
France

+33 381 60 23 60

[info@logopress3.com](mailto:info@logopress3.com)

<http://www.logopress3.com>



### SIGMATEK SYSTEMS, LLC

#### SolidNEST®

1445 Kemper Meadow Drive  
Cincinnati, OH 45240

513 674 0005

[sales@solidnest.com](mailto:sales@solidnest.com)

<http://www.sigmanest.com>



## CERTIFIED GOLD PARTNERS – SHEET-METAL FABRICATION



### **SPI GMBH**

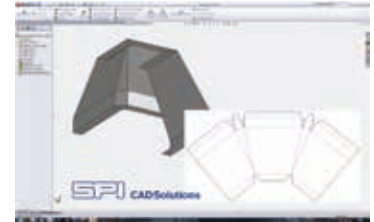
#### **SheetMetalWorks**

Kurt-Fischer-Straße 30a  
22926 Ahrensburg  
Germany

+49 4102 7060

[sheetmetal@spi.de](mailto:sheetmetal@spi.de)

<http://www.spi-sheetmetalworks.com>



### **TOPSWORKS**

#### **TopsWorks: Efficiency Tool for the Entire Process Chain of Sheet Metal**

Esslinger Straße 7  
Leinfelden-Echterdingen,  
Baden-Württemberg 70771  
Germany

+49 711 797310-59

[sales@topsworks.de](mailto:sales@topsworks.de)

<http://www.topsworks.com>



## CERTIFIED GOLD PARTNERS – STEEL DESIGN



### **QUADRO DESIGN PTY. LTD.**

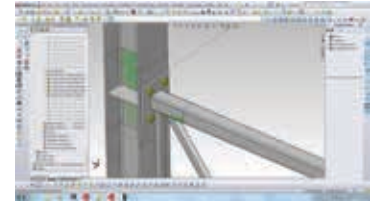
#### **The Steel Detailer**

Quadro Design Pty. Ltd.  
Unit 3, 2-10 Kewdale Rd  
Welshpool, WA 6106  
Australia

+61 083584200

[michael.crawford@quadro-design.com](mailto:michael.crawford@quadro-design.com)

<http://www.quadro-design.com.au/>



## CERTIFIED GOLD PARTNERS – TOLERANCE ANALYSIS



### **VARATECH INC.**

#### **SigmundWorks**

486 Century Lane  
Holland, MI 49423

616 393 6408

[sigmundsolutions@varatech.com](mailto:sigmundsolutions@varatech.com)

<http://www.varatech.com>



## CERTIFIED CAM PARTNERS – CAM

**Mastercam**

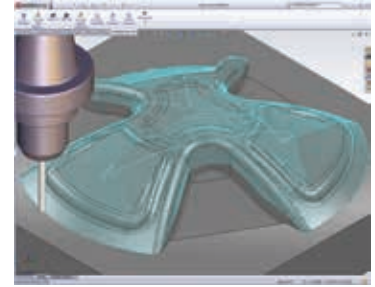
### CNC SOFTWARE, INC.

#### Mastercam

671 Old Post Road  
Tolland, CT 06084

860 875 5006

[mcinfo@mastercam.com](mailto:mcinfo@mastercam.com)  
<http://www.mastercam.com>



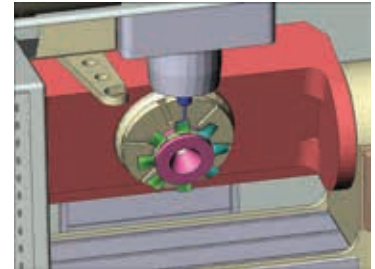
### DP TECHNOLOGY CORP.

#### ESPRIT

1150 Avenida Acaso  
Camarillo, CA 93012

805 388 6000

[esprit@dptechnology.com](mailto:esprit@dptechnology.com)  
<http://www.dptechnology.com>



**edgecam**

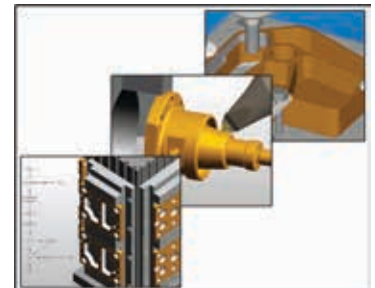
### EDGE CAM – PART OF THE VERO SOFTWARE GROUP

#### Edgecam Solid Machinist

45 Boulton Road  
Reading, Berkshire RG2 0NH  
United Kingdom

+44 (0) 1189 22 6633

[info@edgecam.com](mailto:info@edgecam.com)  
<http://www.edgecam.com>



## CERTIFIED CAM PARTNERS – CAM

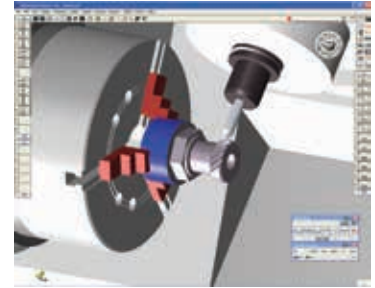


### **GIBBS AND ASSOCIATES GibbsCAM®**

323 Science Drive  
Moorpark, CA 93021

805 523 0004

[sales@gibbscam.com](mailto:sales@gibbscam.com)  
<http://www.gibbscam.com>

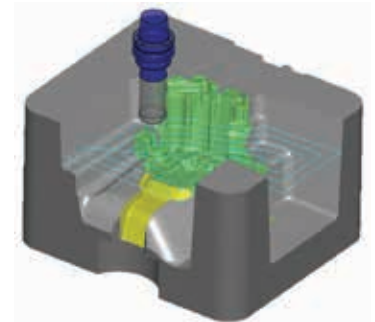


### **NCG CAM SOLUTIONS LTD. NCG CAM**

Silverwood Lodge, Ely Road  
Waterbeach  
Cambridge, Cambridgeshire CB25 9NN  
United Kingdom

+44 (0) 1223 863911

[estelle@ncgcam.com](mailto:estelle@ncgcam.com)  
<http://www.ncgcam.com>



### **SURFCAM, INC. – PART OF THE VERO SOFTWARE GROUP SURFCAM®**

275 E. Hillcrest Drive, Suite 150  
Thousand Oaks, CA 91360

1 800 787 3927

[info@surfcam.com](mailto:info@surfcam.com)  
<http://www.surfcam.com>



©2015 Dassault Systèmes. All rights reserved. 3DEXPERIENCE, the Compass icon and the 3DS logo, CATIA, SOLIDWORKS, ENOVIA, DELMIA, SIMULIA, GEOPAK, EXPLERD, 3DVIA, 3DSWYM, BIOVIA, NETVIBES, and 3DEXCITE are commercial trademarks or registered trademarks of Dassault Systèmes or its subsidiaries in the U.S. and/or other countries. All other trademarks are owned by their respective owners. Use of any Dassault Systèmes or its subsidiary trademarks is subject to their express written approval.

---

## Our 3DEXPERIENCE platform powers our brand applications, serving 12 industries, and provides a rich portfolio of industry solution experiences.

Dassault Systèmes, the 3DEXPERIENCE® Company, provides business and people with virtual universes to imagine sustainable innovations. Its world-leading solutions transform the way products are designed, produced, and supported. Dassault Systèmes' collaborative solutions foster social innovation, expanding possibilities for the virtual world to improve the real world. The group brings value to over 190,000 customers of all sizes in all industries in more than 140 countries. For more information, visit [www.3ds.com](http://www.3ds.com).

