



SolidWorks® Education Edition 2009 Installation Instructions

Preparation

- Verify that your system meets the criteria specified in www.solidworks.com/System_Requirements.
- Back up all SolidWorks files (parts, assemblies, and drawings, document templates, sheet formats, library features, and form tools) before upgrading to SolidWorks 2009. Files you open and saved in SolidWorks 2009 cannot be opened in earlier versions.
- To minimize disk space consumed, please consider uninstalling your older Education Edition and using a new installation of the new Education Edition product. If you uninstall the older version please be sure to also uninstall SimulationXpress EDU (formerly COSMOS EDU) products, along with older versions of eDrawings, DWGeditor, etc.
- Locate your Serial Number (S/N). The number typically begins with 9710 (**Network**) or 9701 (**Stand Alone**). NEW Customer – S/N is located on the front of the box on a sticker. CURRENT Customer - S/N is located inside SolidWorks under HELP then ABOUT SOLIDWORKS. If you cannot find or you have misplaced your number, contact your local educational reseller to obtain one.
- Uninstall any alpha, beta, or pre-release versions of the SolidWorks or COSMOS software.
- If you are installing a network version you will need to obtain a “SolidWorks Network License file” (in the form of a txt file). If you are installing a stand alone version you will need to be on-line as the activation of stand alone licenses is provided through the Solidworks website. Please be sure to create a Customer Portal account as described on page 3 of this document.

Installation and Licensing Process

Network

Section 1 & 2

Stand Alone

Section 3

Registration

To register during the installation, enter your registration code at the prompt or follow the instructions to request a code at the end of the installation. If you prefer to register later, you can use the product for up to 30 days without activating (Stand Alone only).

**You are ready to begin your installation of the
SolidWorks® Education Edition!
Network Users Only**

Ver. 1



USB dongle

- OR -

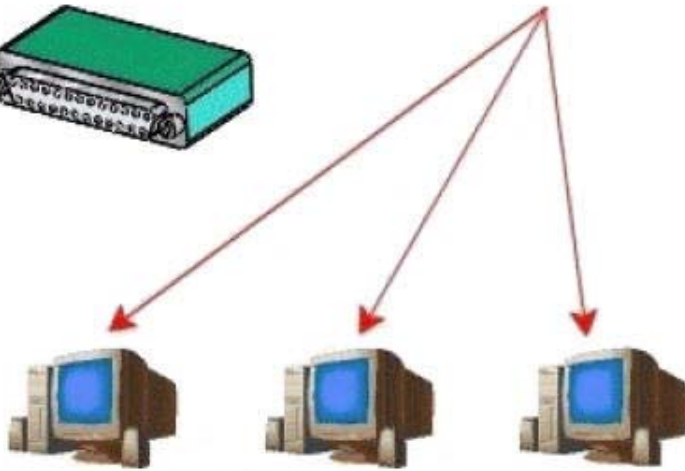
Parallel port dongle



License server

LICENSE SERVER

- Install SolidWorks
- SolidWorks Network License
- Dongle



License clients


LICENSE CLIENTS

- Install SolidWorks Software

Section 1 | SolidWorks License File Retrieval

This step is for users who are on **NETWORK** and need a License file.

1. Go to www.solidworks.com and then click **Login** (at the top).
2. Once you are in the Login page, click **SolidWorks Customer Portal**. This will direct you to the **sign-in** page for the customer portal.
3. Once you are in the **sign-in** page, on the right side of the page, click on **To create an account, click here**, [click here](#).



Welcome to the SolidWorks Customer Portal

Already a member?
Sign-in using your email address and password

Language: English

email Address:

Password :

Remember Me

Not a member?

[Learn about the benefits of joining](#)

To create an account, **click here**

[Forgot your password?](#)

©2009 Dassault Systèmes SolidWorks Corp.
[Terms of Use](#) [Privacy Policy](#) [Piracy Prevention](#)

4. Put in your Serial Number in the box and click **Next** at the bottom of the page.

Logout | SolidWorks Websites | English | Help

DS SolidWorks Customer Portal

HOME MY SUPPORT REFERENCES FORUMS COMMUNITY

CP Registration - Check Serial Number:

Check Serial Number

Please supply a serial number below and click "Next". If you do not have a serial number, please click the button labeled "I don't have a serial number at this time".

Serial Number:

Next I don't have a serial number at this time Cancel

When navigating through your account creation, please use the navigation buttons on the page. Using your standard browser navigation buttons will impact your ability to complete the account creation process successfully.

5. After you have completed filling out your Serial Number, you will then be asked to verify your information. After you verified, click **“Yes, this information is accurate”**

Logout | SolidWorks Websites | English | Help

DS SolidWorks Customer Portal

HOME MY SUPPORT REFERENCES FORUMS COMMUNITY

CP Registration - Validate Account Info:

Validate Account Info

According to our records, the displayed information is what has been entered as the company associated to the serial number you have supplied. Is this information accurate?

Account Name: Solidworks Internal Access Activations

Address Line 1: 300 Baker Ave

Address Line 2 (if applicable):

Address Line 3 (if applicable):

City: Concord

State: MA

Zip: 01742-2131

Country: USA

Yes, this information is accurate No, this information does not match my company information Back Cancel

When navigating through your account creation, please use the navigation buttons on the page. Using your standard browser navigation buttons will impact your ability to complete the account creation process successfully.

6. Next, type in your email address in the box and click **Next**. Fill in the appropriate fields asked in the next step. (You will not be able to move forward if you have not completed the required fields which are indicated with a red asterisk.)

Logout | SolidWorks Websites | English | Help

DS SolidWorks Customer Portal

HOME MY SUPPORT REFERENCES FORUMS COMMUNITY

CP Registration - Check Email Address:

Check Email Address

Please provide us with your e-mail address.

**Please note that this e-mail address will be where licensing information, as well as any communication that is done through your SolidWorks Customer Portal account will be sent.

*Email Address:

Next Back Cancel

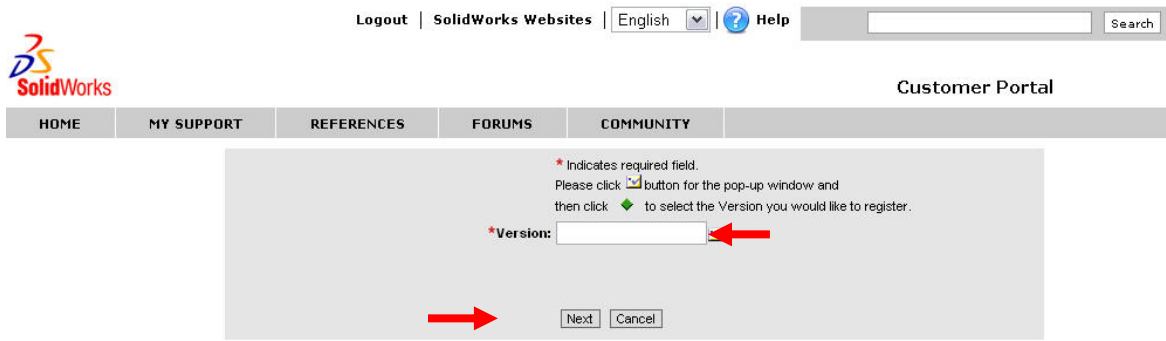
When navigating through your account creation, please use the navigation buttons on the page. Using your standard browser navigation buttons will impact your ability to complete the account creation process successfully.

7. You have successfully signed in to the Customer Portal. In order for **Full Access** to the portal, you must, **Register your Products**.

Under **My Support**, click **Register My Products**.

8. After you click Register My Product, you will have to enter your **SolidWorks Serial Number** in the box. (The number typically begins with 9710 (**Network**) or 9701 (**Stand Alone**) and is located on the front of the box on a sticker. If you cannot find or you have misplaced your number, contact your local educational reseller to obtain one.) Then click **Next**.

9. Once you have entered your serial number, you will then be asked to select what version you have. Click the icon next to the box to select your version of the software and then click **Next**.



10. The **SolidWorks Network License File (.txt)** has been emailed to you. You should receive this file in a few minutes. **(Note: SAVE THE NETWORK LICENSE FILE TO YOUR C: DRIVE. You will need this in Section 2)** Click **Next**.



Network License

Example of Email

SolidWorks eRegistration Serial Number 971000587698****
 CustomerCenter@SolidWorks.com
 To: Johnny Kim
 Attachments: snl_license_email.txt (885 B)

Dear Johnny,

Thank you for completing the SolidWorks eRegistration. Your product information is as follows:

Serial Number: 971000587698****

Thank you for using SolidWorks 3D CAD Software.

Sincerely,
 SolidWorks Corporation
 SolidWorks Corporation - 300 Baker Avenue - Concord, MA 01742
 Email: CustomerCenter@solidworks.com

SolidWorks eRegistration Serial Number 970100587697****
 CustomerCenter@SolidWorks.com

Extra line breaks in this message were removed.

To: Johnny Kim
 Dear Johnny,

Thank you for completing the SolidWorks eRegistration. Your product information is as follows:

Product: SolidWorks Edu. Edition Stand-alone 2006-2007 Serial Number: 970100587697**** Registration Code: OBB7G326

Thank you for using SolidWorks 3D CAD Software.

Sincerely,
 SolidWorks Corporation
 SolidWorks Corporation - 300 Baker Avenue - Concord, MA 01742
 Email: CustomerCenter@solidworks.com

Section 2 | SolidWorks® Education Edition Installation (Network)

Note: If you are installing SolidWorks on a Network with Restricted Rights, please go to the Customer Portal for additional documentation or contact your local reseller for assistance.

This step is only for users who are on **NETWORK**. If you purchased a **Stand Alone**, proceed to **Section 3** in the installation process.

Note:

- All previous License Managers must be removed from your computer before beginning the installation of the new License Manager (i.e. 2008 must be removed before installing 2009).
- The License Manager must be installed on the machine that will be used to distribute SolidWorks licenses on your network.
- Your dongle (hardware lock) must be inserted on the machine where you will install your License Manager and not any other machine.
- The License Manager for 2009 will license both SolidWorks and SimulationXpress (formerly COSMOS) products. In addition it will license SolidWorks 2008 based EDU products. Older versions of SimulationXpress will require the older SimulationXpress only License Manager.

1. INSERT DONGLE (Note: USB or Parallel Type)

2. **Insert DVD** in your local DVD Drive. If SolidWorks Master Setup does not come up automatically, select My Computer and double click the D: drive. Enter your product serial number and click **Next**.

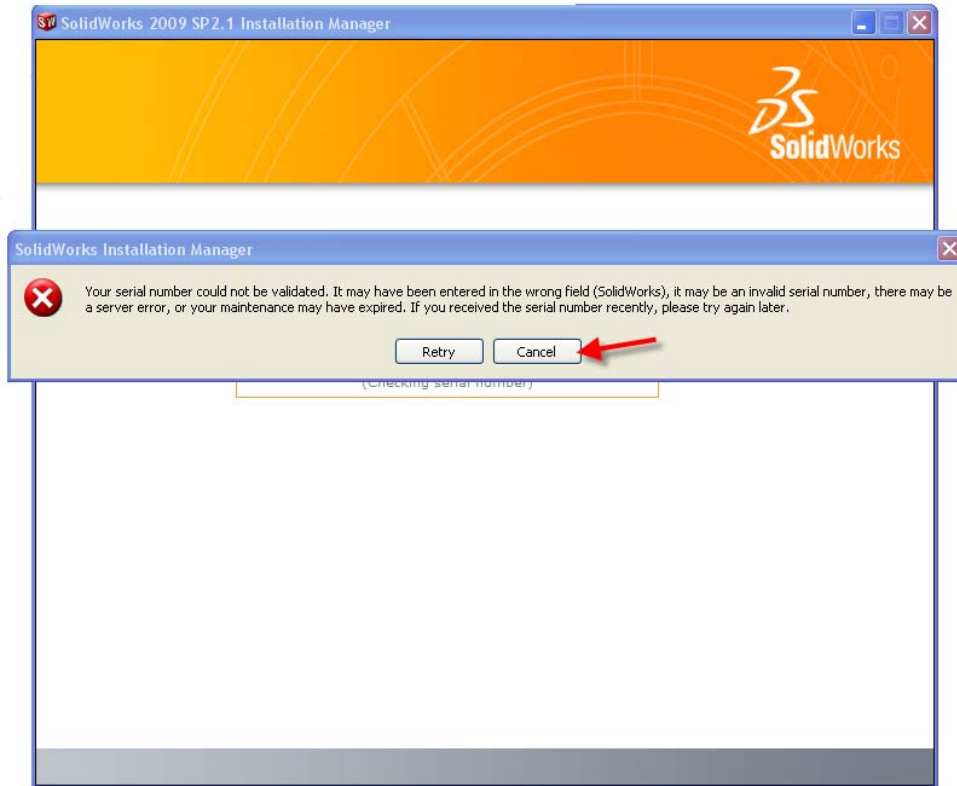


Note:

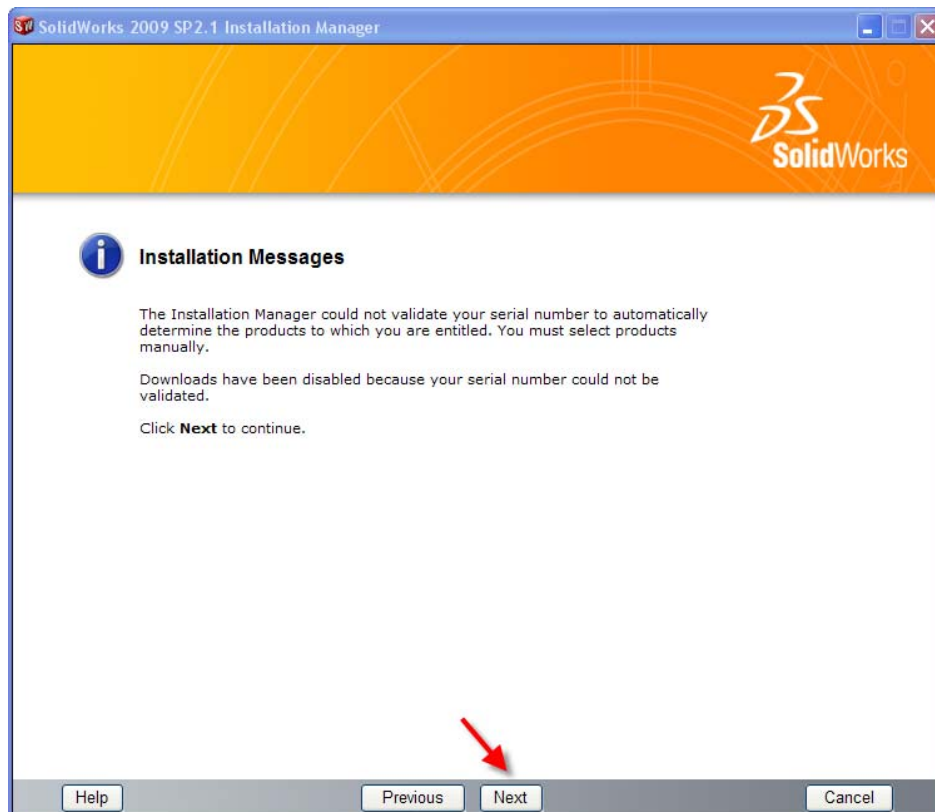
You do not have to fill in the last 2 boxes!

SolidWorks will automatically populate the remaining boxes for you after the warning prompt in the next step

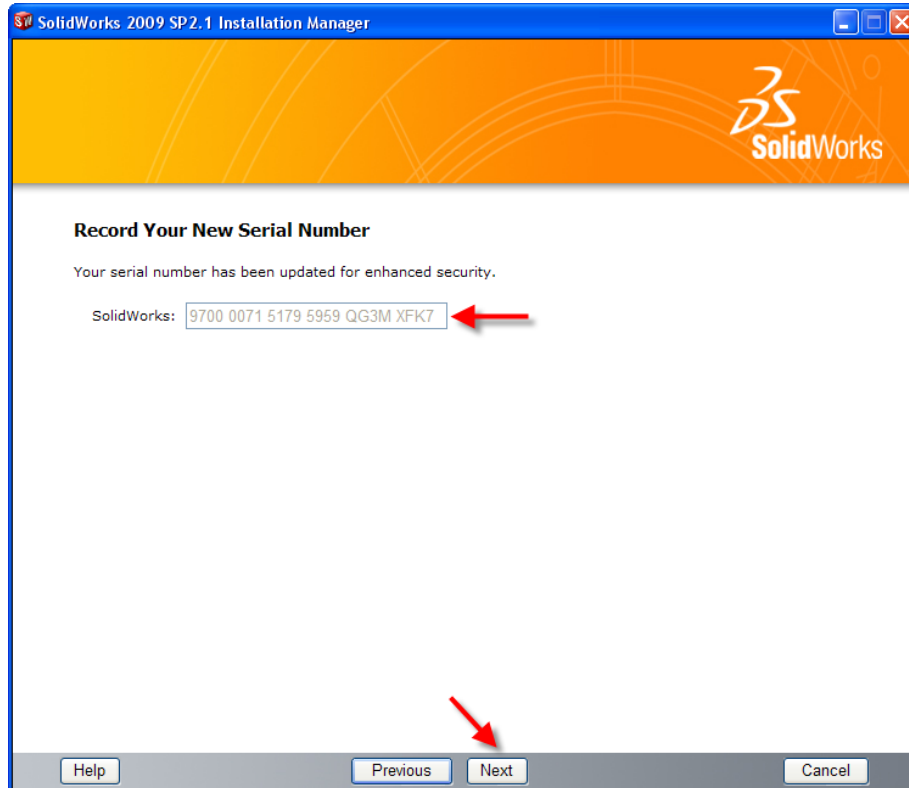
3a. You will get a prompt box saying your serial number is not a SolidWorks Serial number. **IGNORE THIS MESSAGE** and **click CANCEL**.



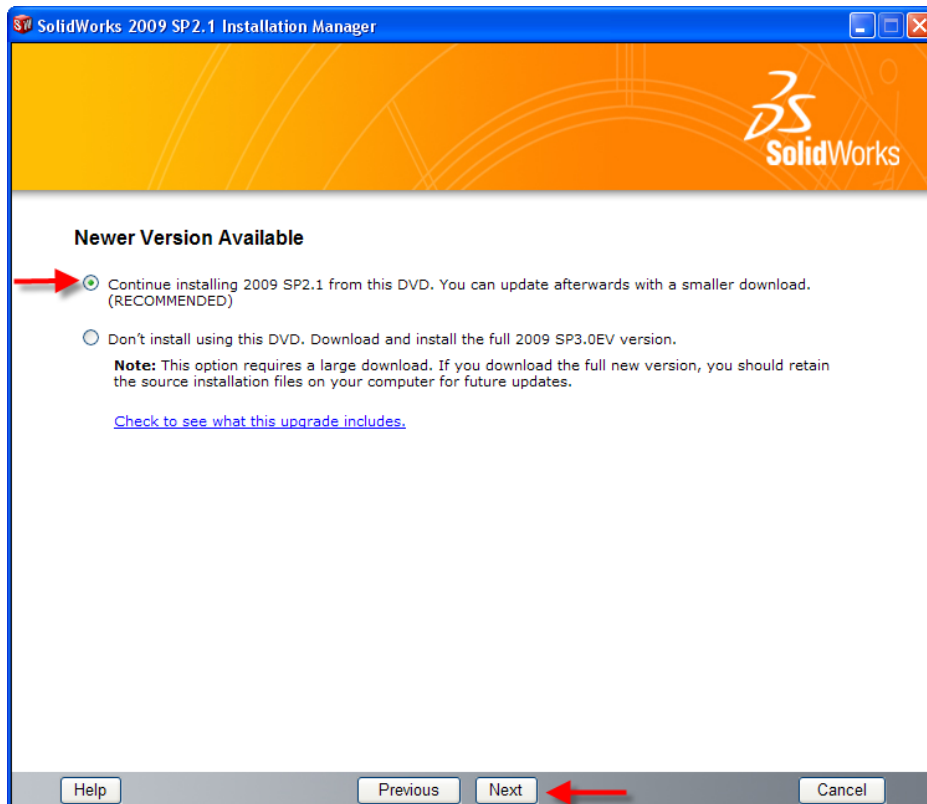
3b. Then click **Next**.



4. Please Record your new Serial Number. Click **Next** to begin your installation.



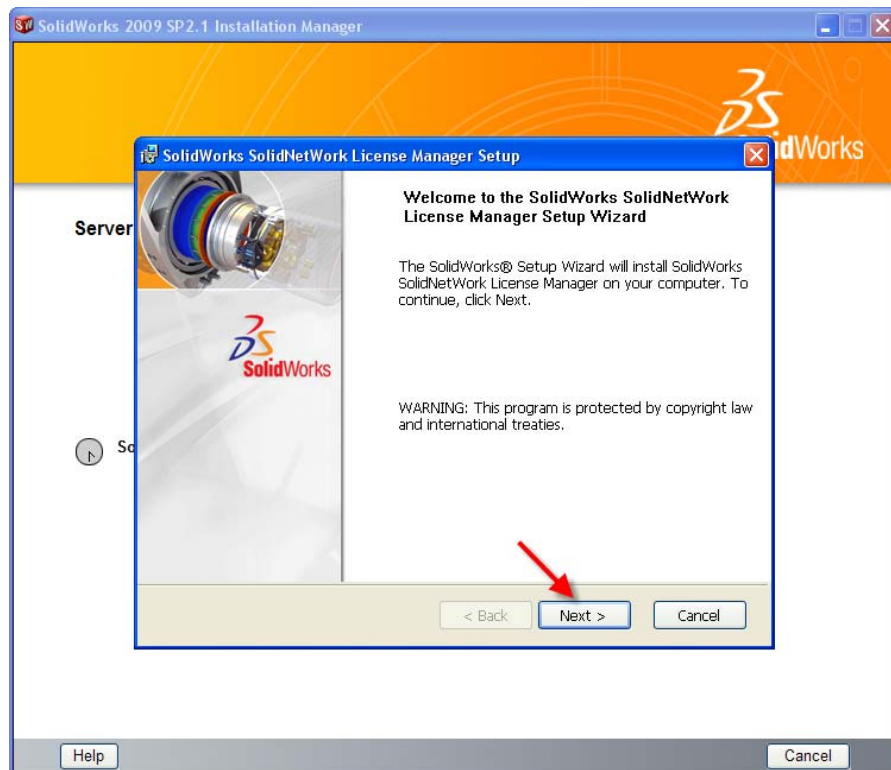
5. You may be prompted with a screen stating that a new version is available. **DO NOT** select to update to a new version. **Select** Continue installing from this DVD and click **Next**.



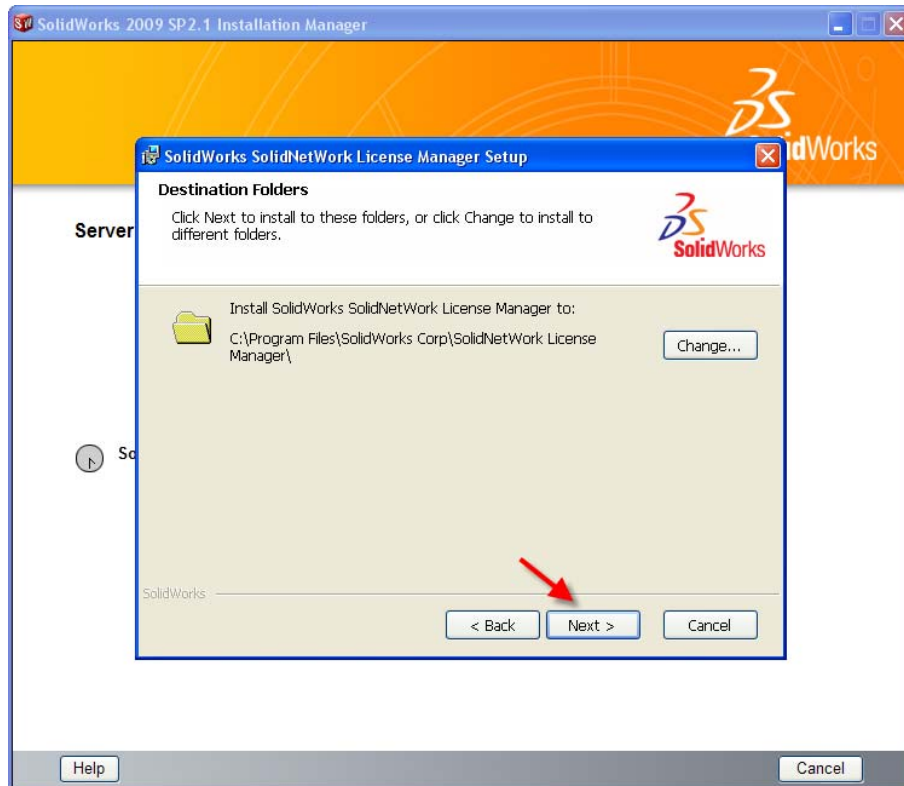
6. You will be asked to choose your installation type. Click **Administrative/Server installations**, then **ONLY** have “**Install SolidNetWork License Server**” check marked. Once you have selected, click **Next** (this will begin installing the Network License Server).



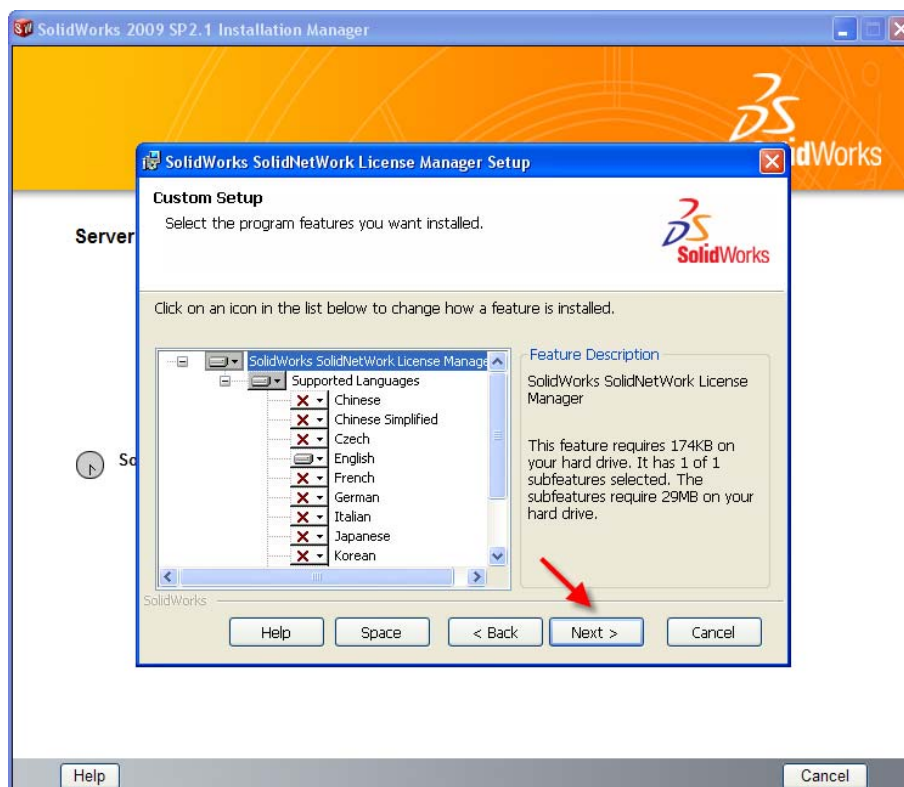
7. You are now ready to install the SolidNetWork License Manager, click **Next**.



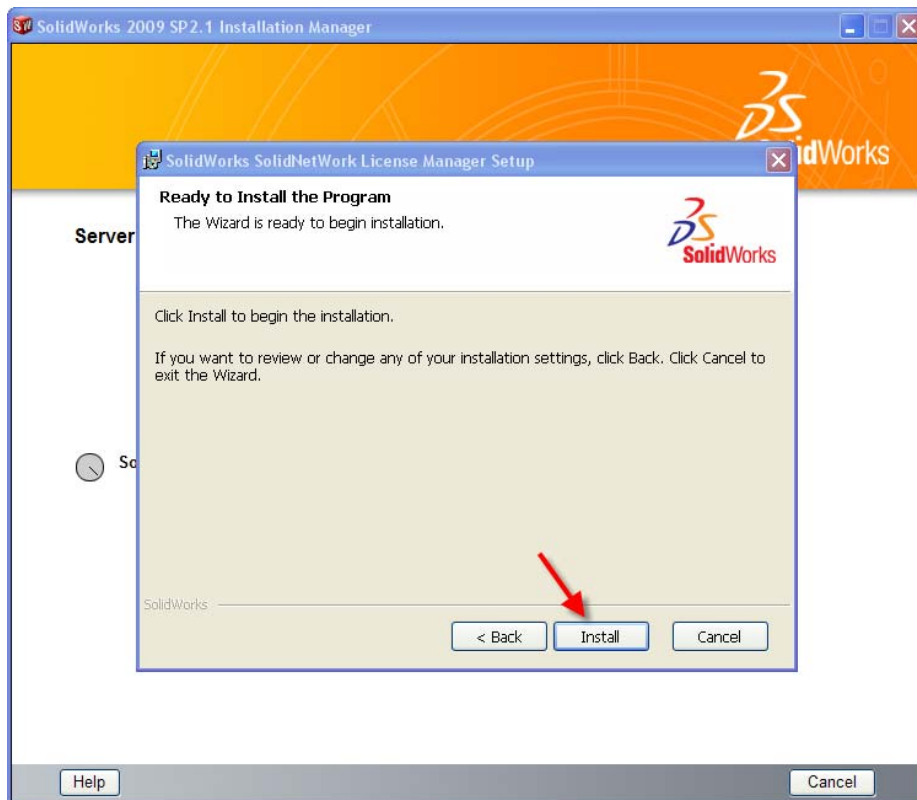
8. You will next be asked where you want the program files to be installed. After you select your location, click **Next**.



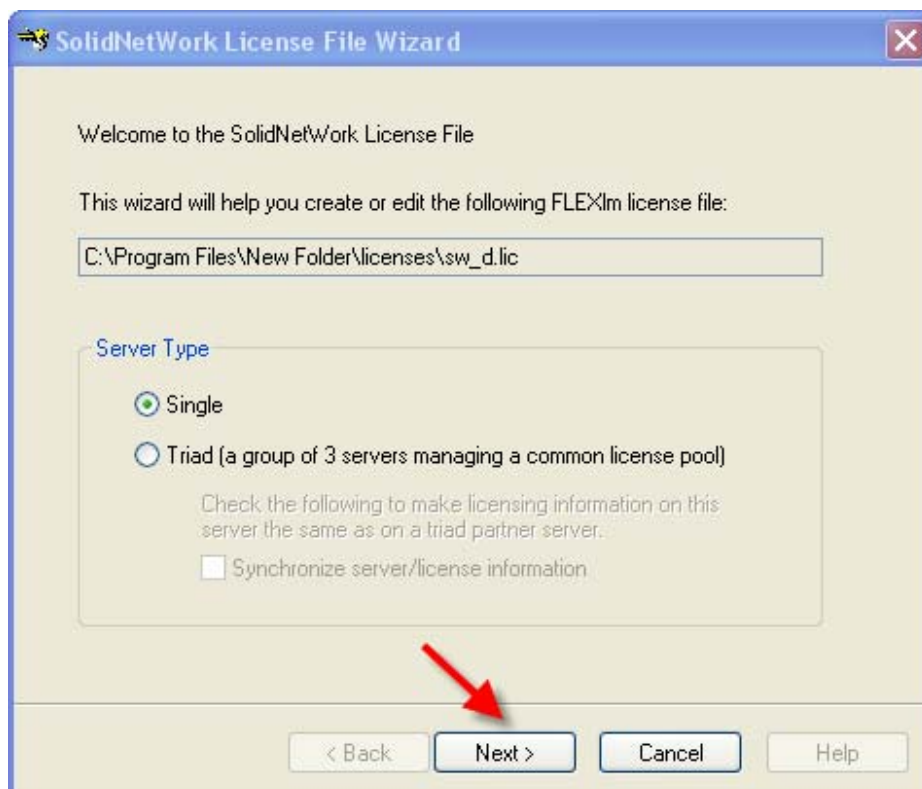
9. You will next be asked what language you want as your default. After you select your default language, click **Next**. *Please note: program defaults to English.*



10. Now you are ready to begin the installation. Click **Install** to proceed.

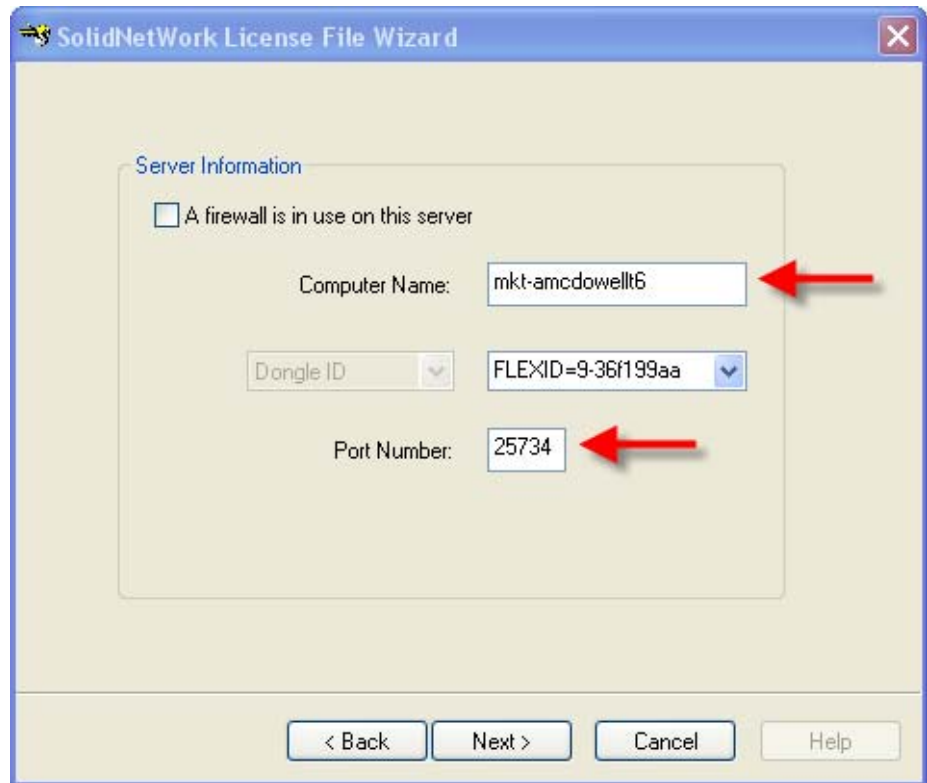


11. To continue the installation, **DO NOT** change the location where “The wizard will help you create or edit the FLEXlm license file.” Keep the server type at **Single**, and then click **Next**.

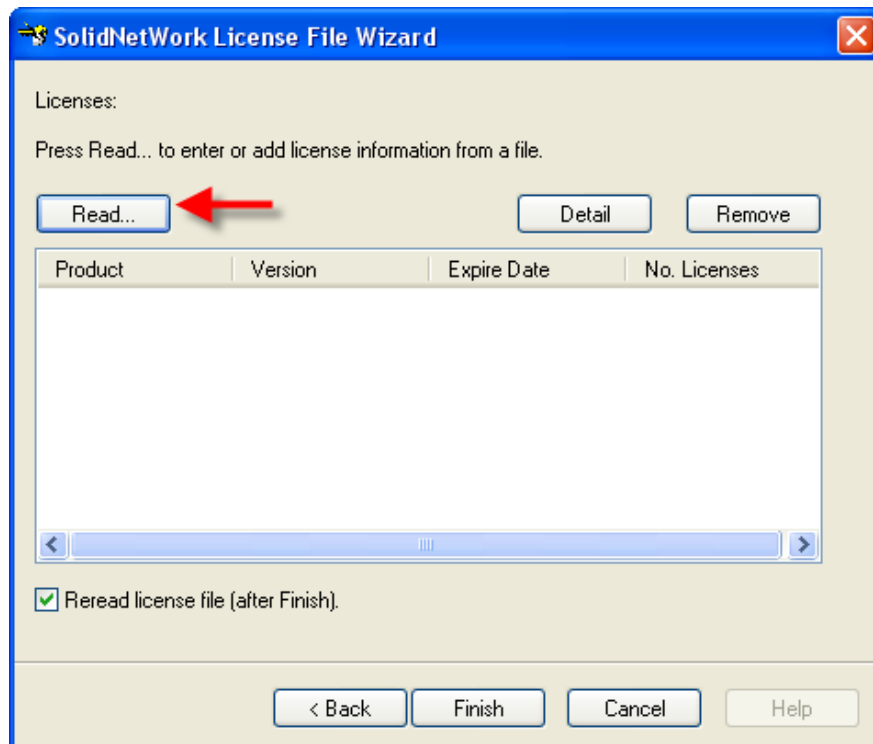


12. In this step of the installation, you will be given your server information. **PLEASE NOTE the Computer Name and Port Number.** (You will need the Computer Name and Port Number in Step 24b of the software installation process.) Once you have written down your Computer Name and Port Number, click **Next**.

Note: Please take note of the Firewall message. If your network has a firewall, check the box on the upper left hand corner.



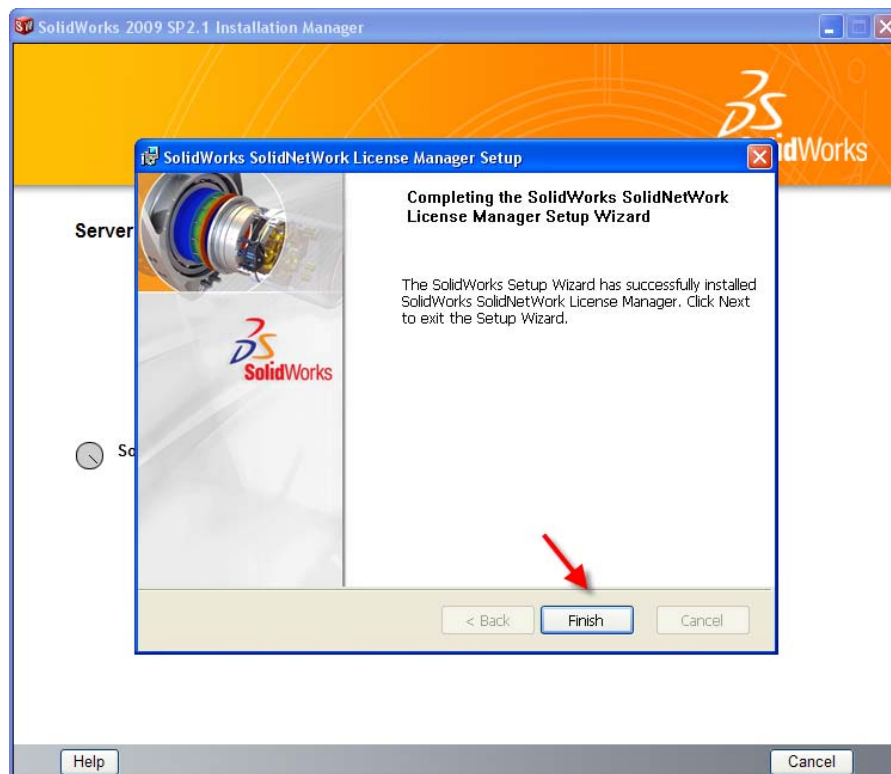
13. You will now have to **insert your SolidWorks Network License File** that you obtained during Section 1. (You were given a Network License File (.txt) during Step 1. This file was placed in your C: Drive.) Click **Read** to insert your Network License File.



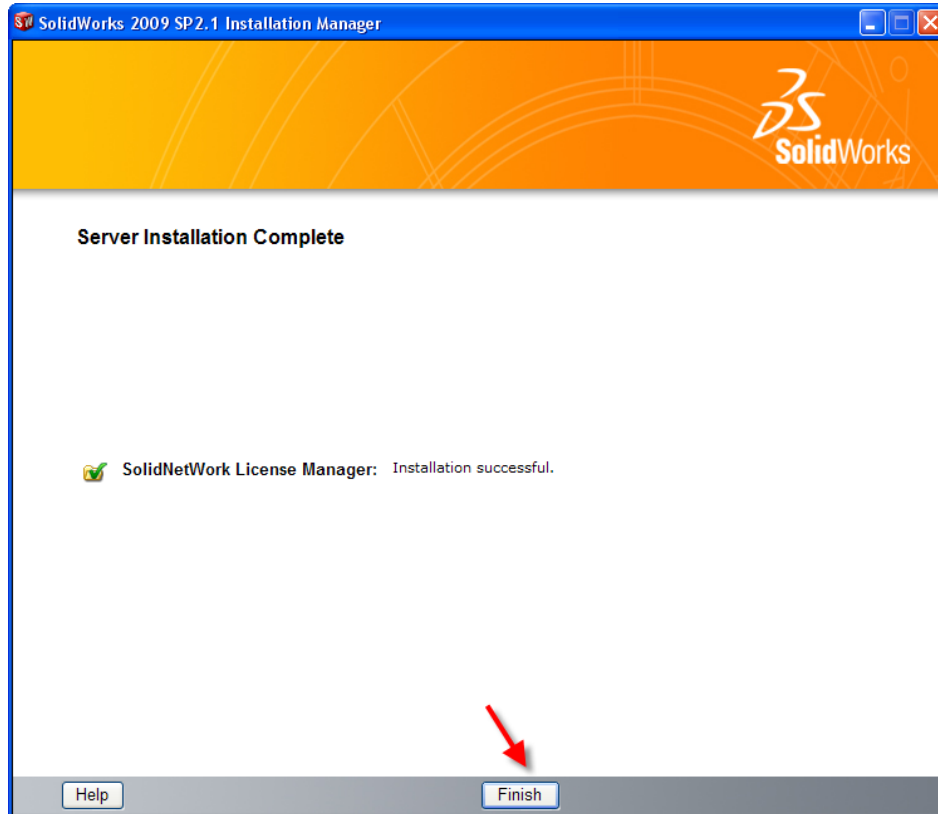
14. Click **Browse** and locate the Network License File that you have copied to your C: Drive. Once you located your Network License File, click **Ok**. Your Network License information will show on the screen. Once you have looked over your information, click **Finish**.



15. You are now finished installing the SolidWorks SolidNetWork License Manager. Click **Finish**.



16. Then click **Finish** again.

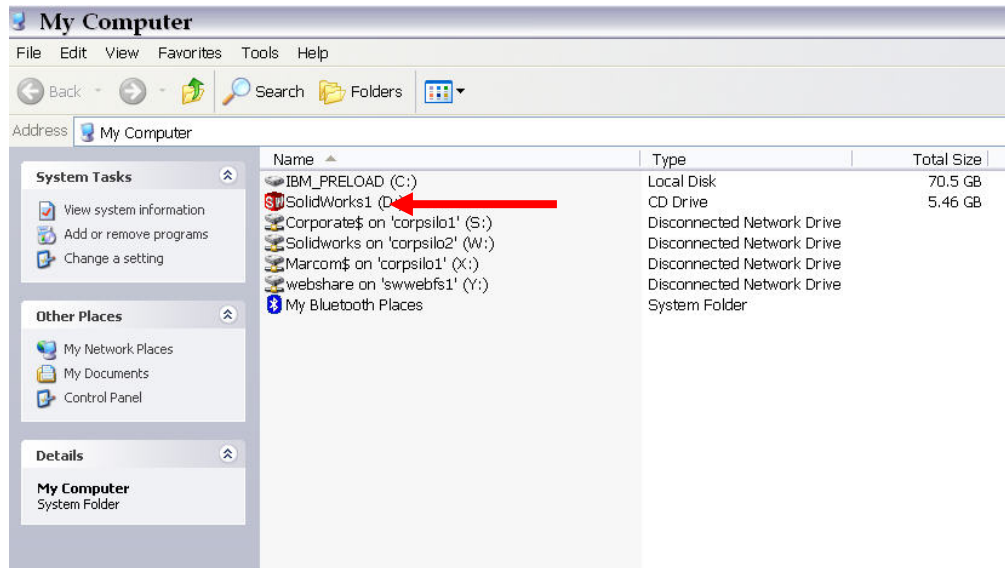


NOTE: You have now finished installing the SolidWorks License Manager. **You must** now go to your client **computers, and** insert the DVD and proceed as follows on step 18.

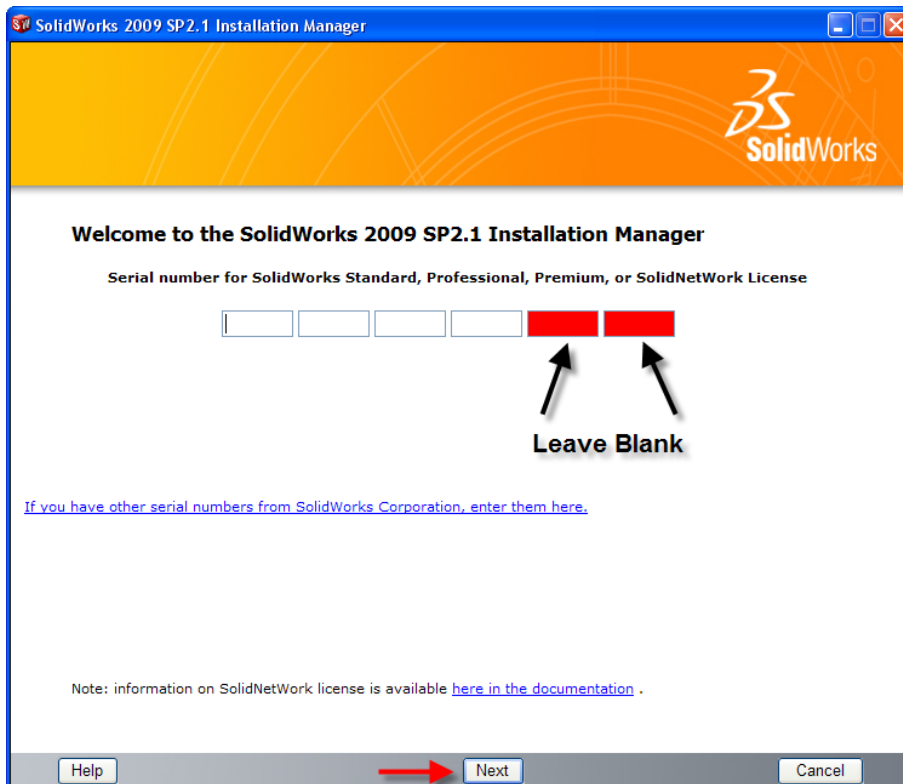
Before beginning the installation process, please be sure to close out of all SolidWorks programs currently open on your computer.

17. Click **My Computer** and double click your D: drive (where SolidWorks DVD is in) to continue installation

Please Note:



18. The DVD will begin loading and the installation will continue. For new installation enter your Serial number below (16 digits). Click **Next**.

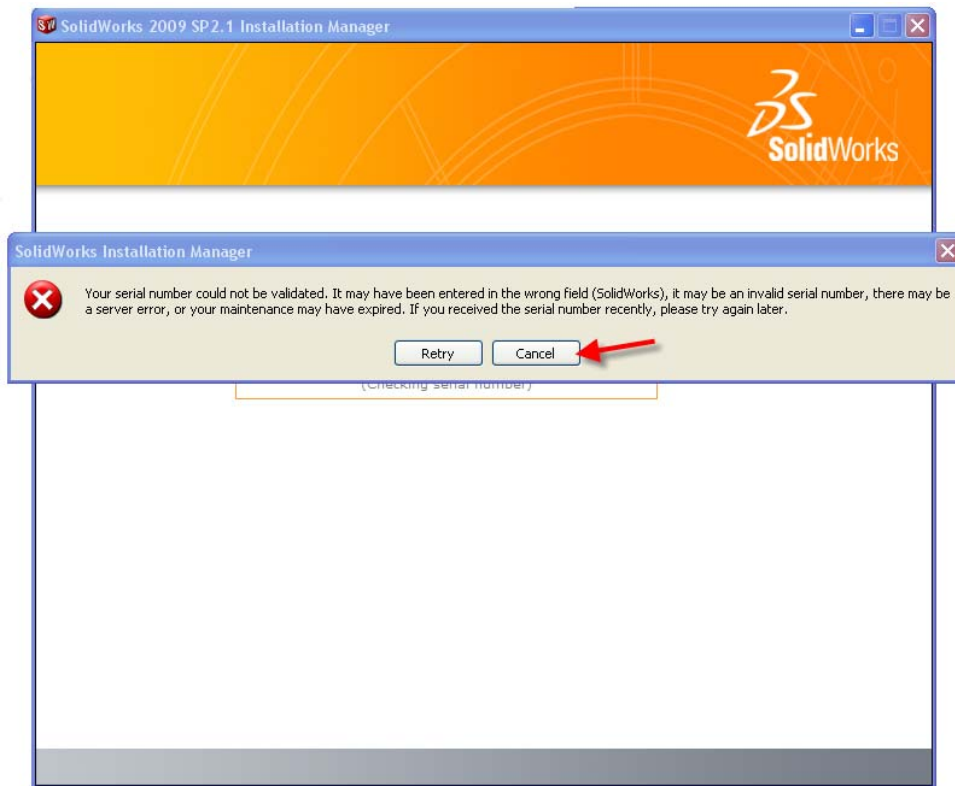


Note:

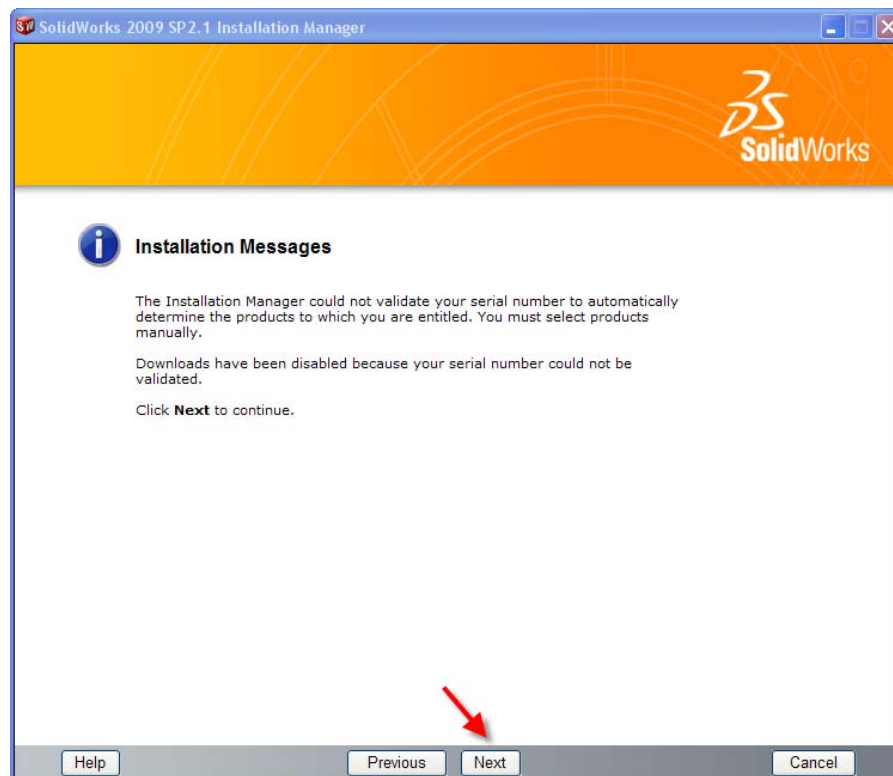
You do not have to fill in the last 2 boxes!

SolidWorks will automatically populate the remaining boxes for you after the warning prompt in the next step

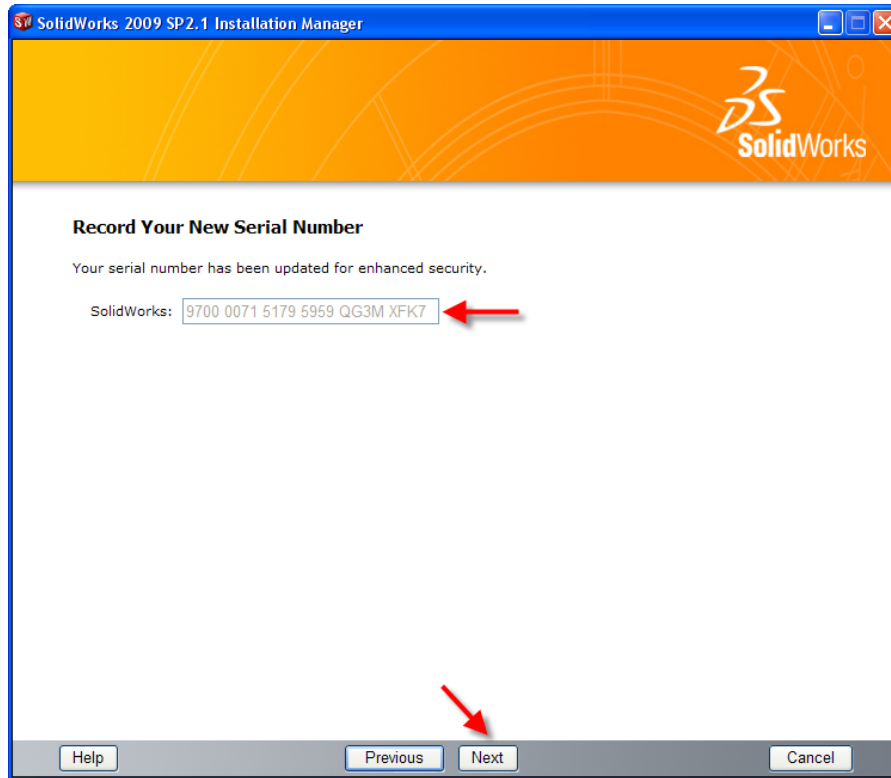
19a. You will get a prompt box saying your number is not a SolidWorks Serial number. **IGNORE THIS MESSAGE** and click **CANCEL**.



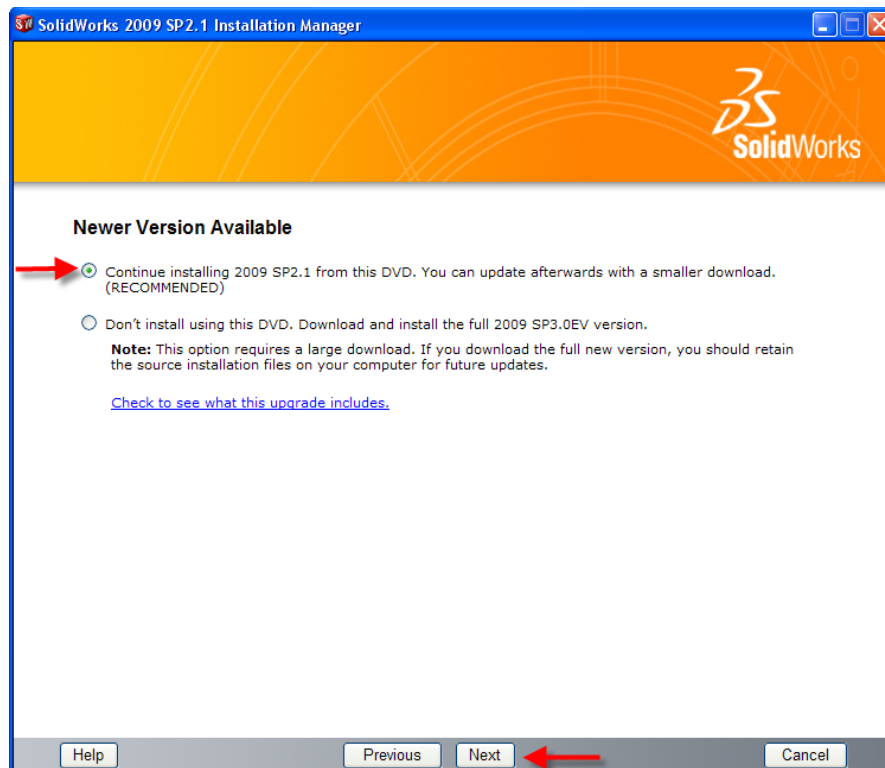
19b. Then click **Next**.



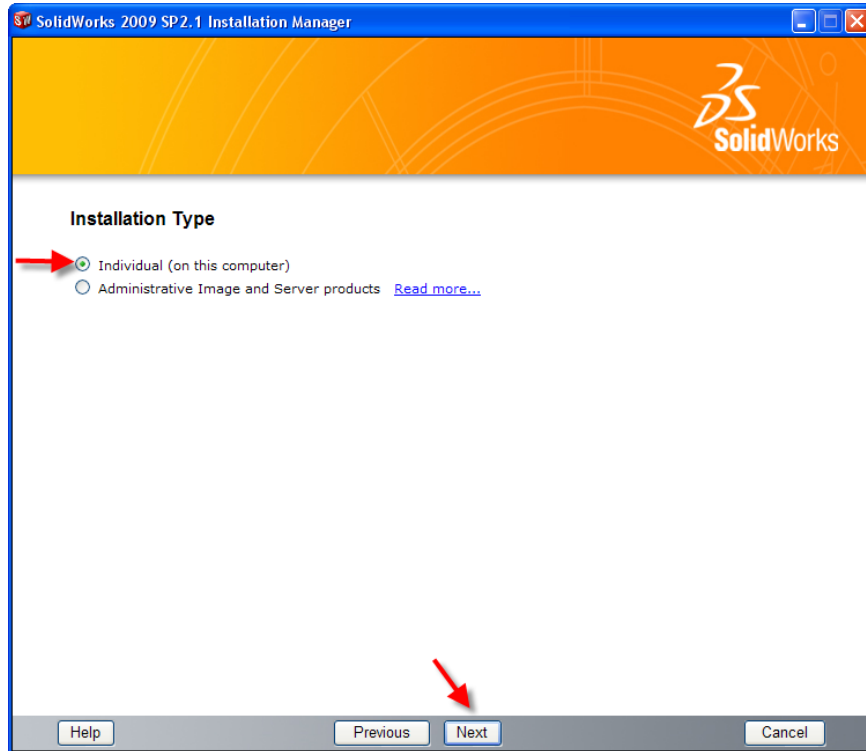
20. After you click Next, a screen will appear with your full Serial Number. Write down your serial number, click **Next**.



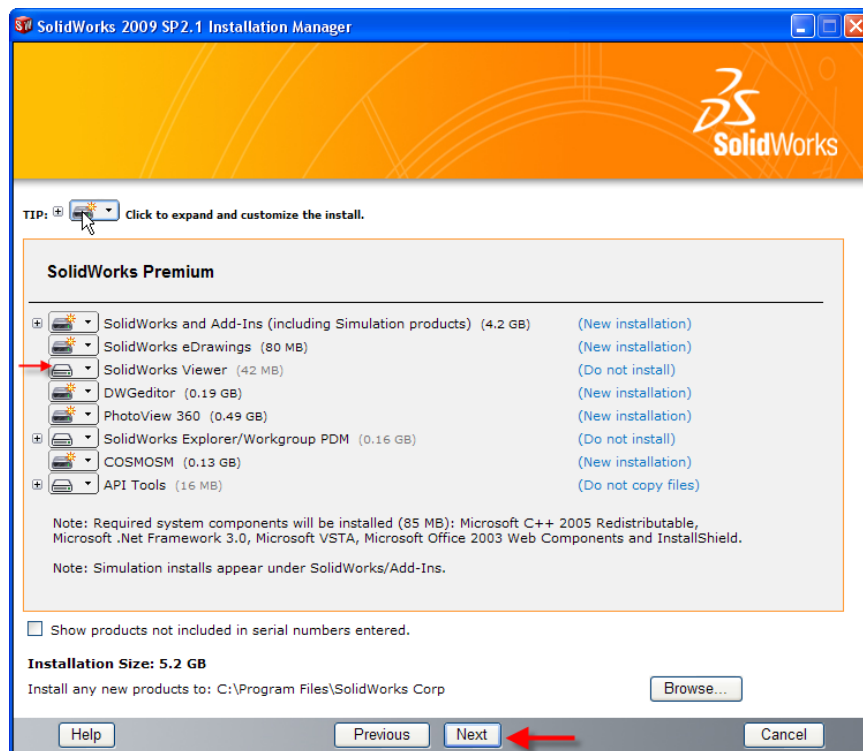
21. You may see a screen that a newer version is available, **ALWAYS** select continue installing from DVD and click **Next**.



22. You will be asked to choose what you would like to install. Click **Individual Installation** then click **Next** (this will begin installing SolidWorks Education Edition).

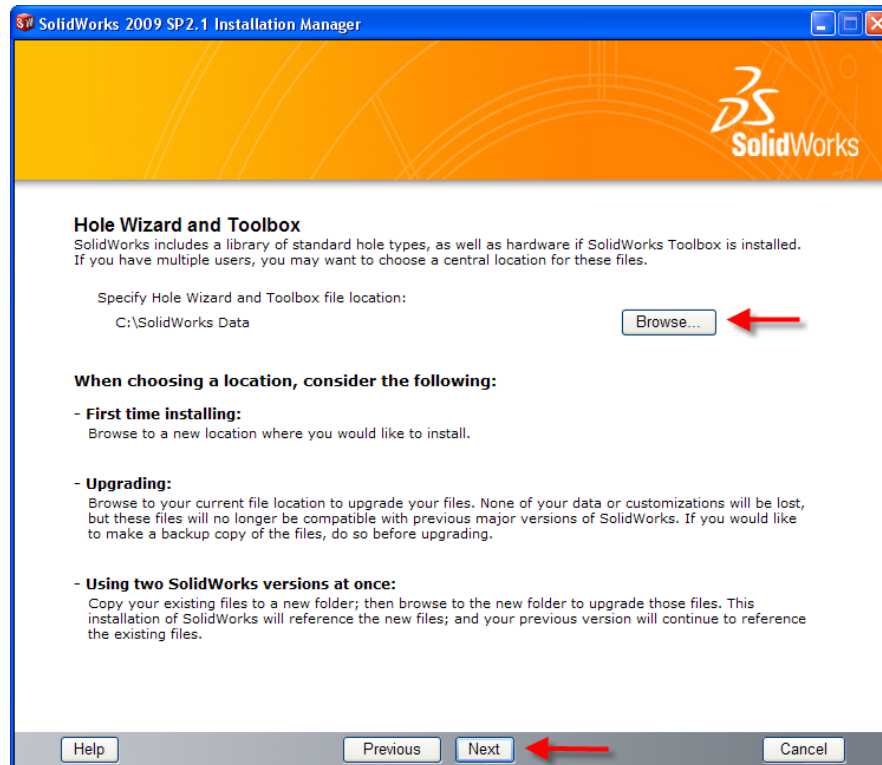


21. After you have clicked Next, the SolidWorks Setup Wizard will guide you through the installation. **Accept Defaults** on the screen (**DO NOT change anything**) Click **Next** to continue installation. Please note: the SolidWorks Viewer is not defaulted to install automatically. If you would like the SolidWorks Viewer installed, click on the icon and select install.

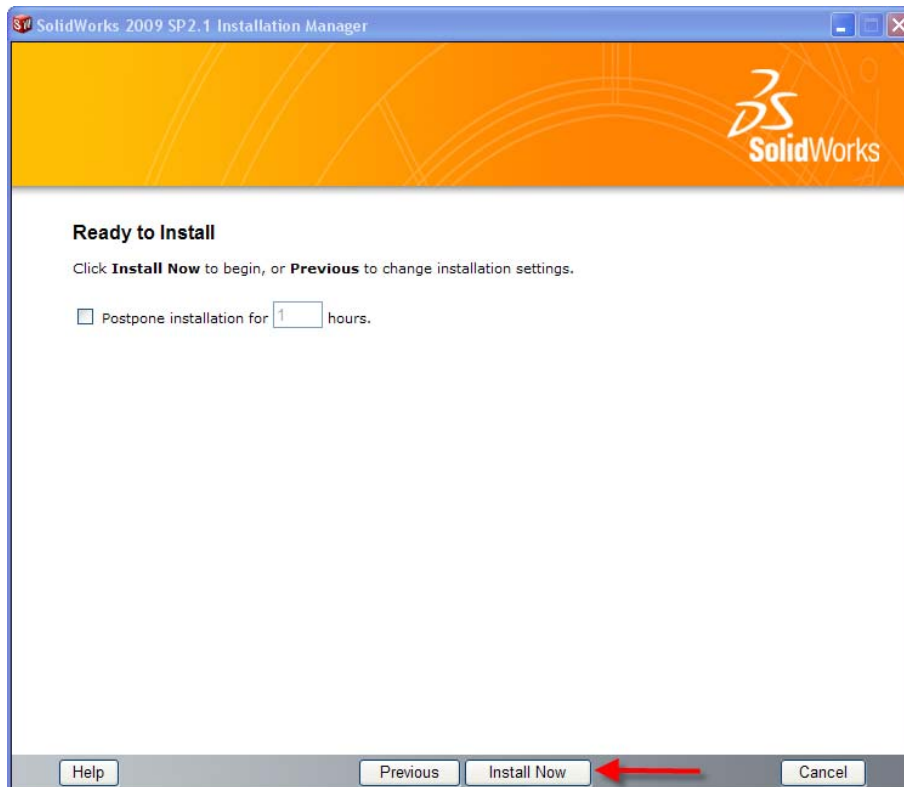


**Please note, you may be asked to confirm the SNL server location. Type in or Confirm location and click OK. SNL is equal to Port Number@Computer Name (example 25734@mkt-amcdowellt6); see step #12.*

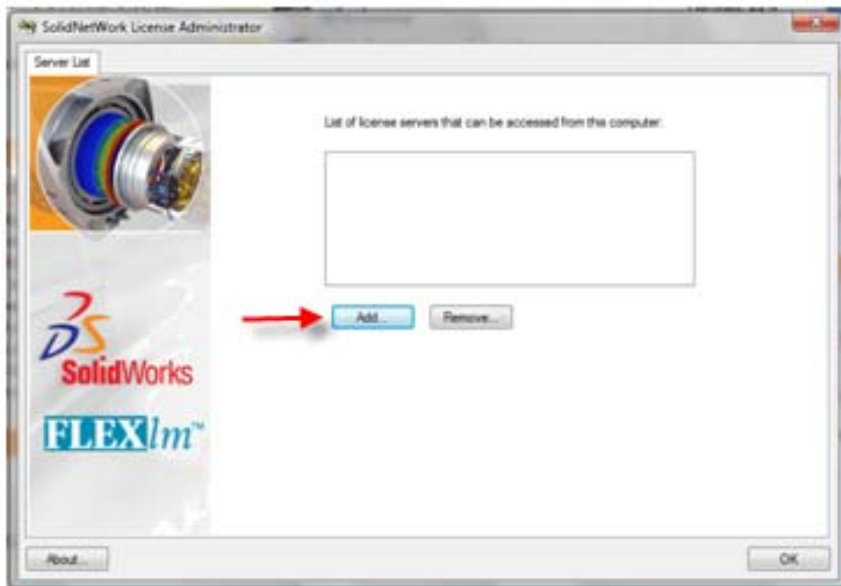
22. Confirm the location you would like to save all Standard Library Files. Read the descriptions within the image below for new users, existing customers and multi-version software users for more details. Once location is selected, click **Next**.



23. Ready to Install, click Install now.



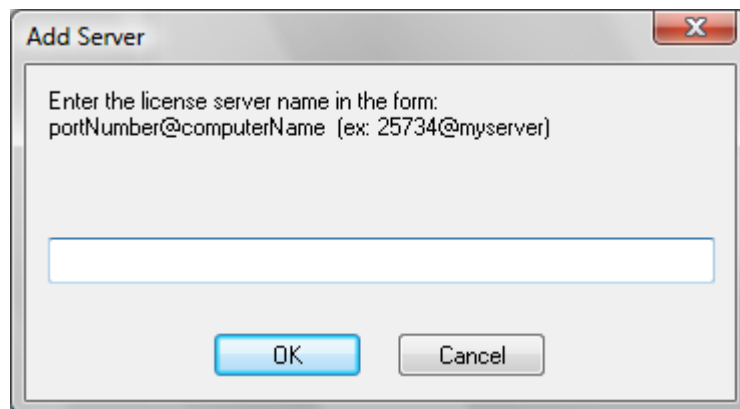
24a. During the installation you will be presented with the following screen (if the computer you have installed Solidworks on is not the license server). Click **Add**.



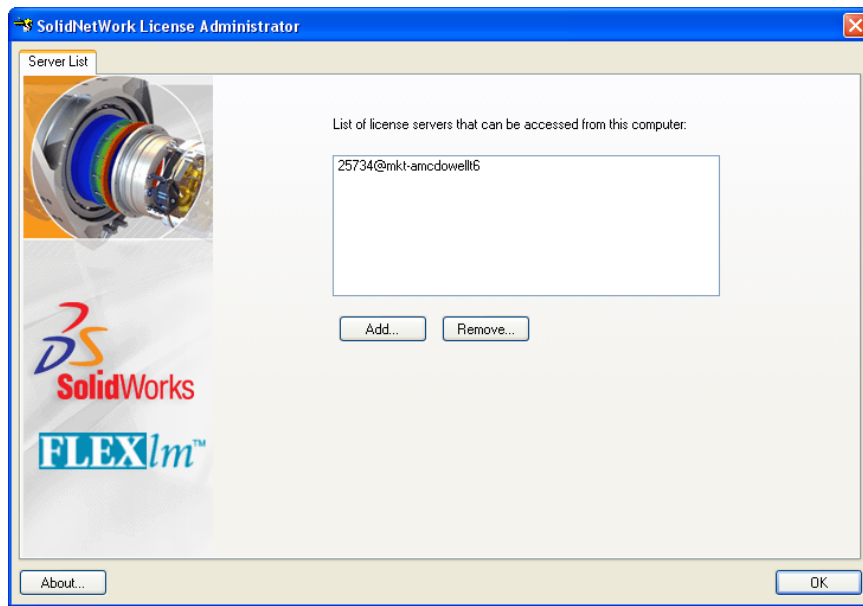
Note:

If you are installing as an upgrade to an existing installation of SolidWorks, it is possible that the server name will already be included in the dialog box

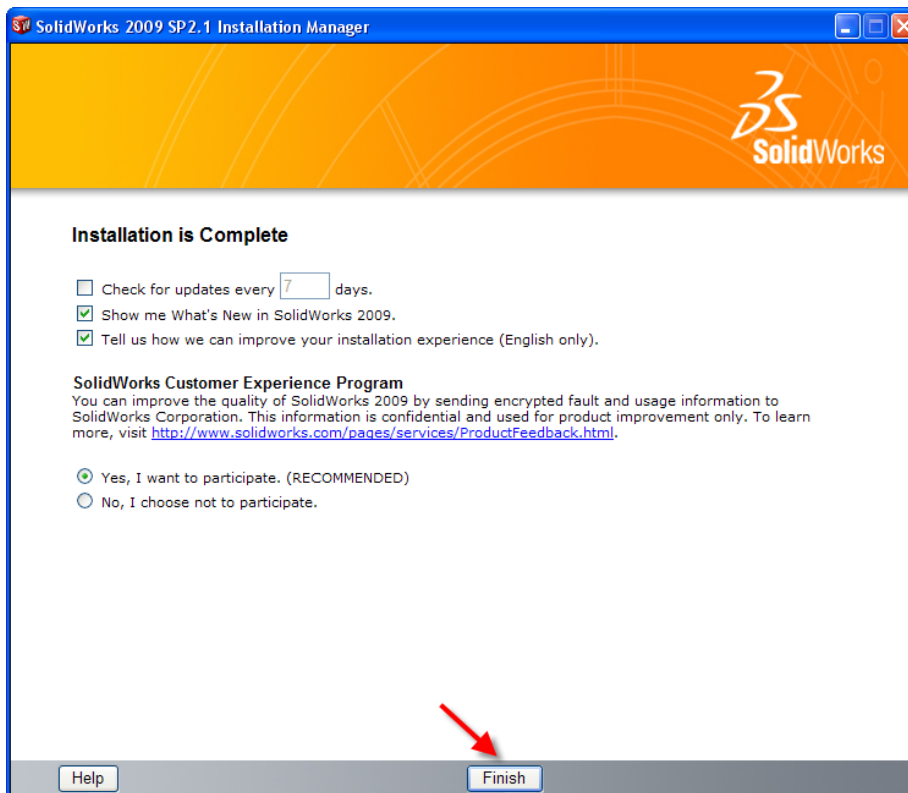
24b. Enter your license server and the port number that you specified in step 12. The default port is 25734. Enter it as portNumber@computerName. Then click “OK”



24c. You should now see your license server listed in License administrator. Click “Ok”



25. Installation is Complete! Click Finish.



Note: Depending upon your computer configuration you may or may not need to restart your computer.

Installing SolidWorks will also install COSMOS products automatically. You do not have to re-install COSMOS after the SolidWorks installation is complete.

Section 3 | SolidWorks® Education Edition Installation (Stand Alone)

Note: For SolidWorks Network install, the software does not get installed on the network machine (Server). SolidWorks should be installed on the user machines (Client).

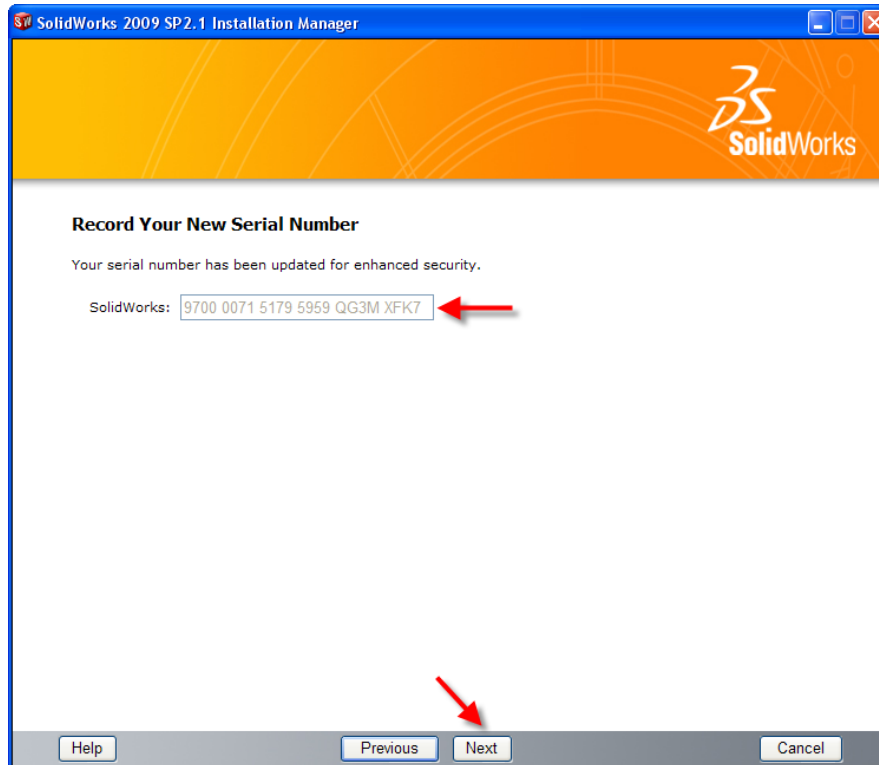
Before beginning the installation process, please be sure to close out of all SolidWorks programs currently open on your computer.

- 1. On the CLIENT Machine Insert DVD.** For new installation enter your serial number below (16 digits). Leave the last two boxes empty and Click **Next**. SolidWorks will automatically populate the last two boxes for you after clicking Next.

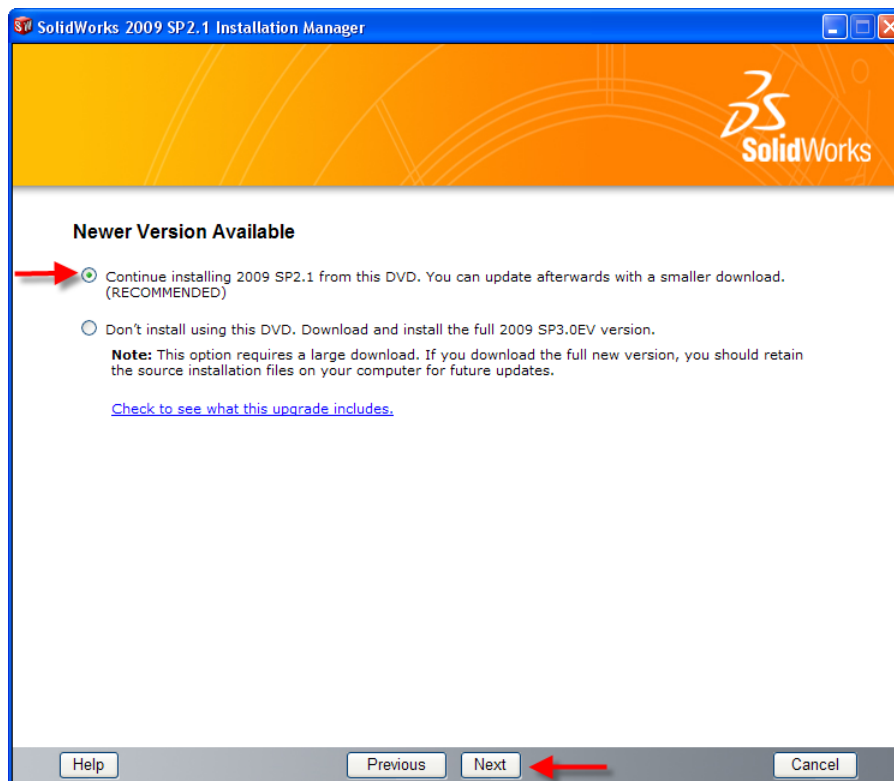
Note: Installing SolidWorks will also install SimulationXpress products automatically. You do not have to re-install SimulationXpress after the SolidWorks installation is complete.



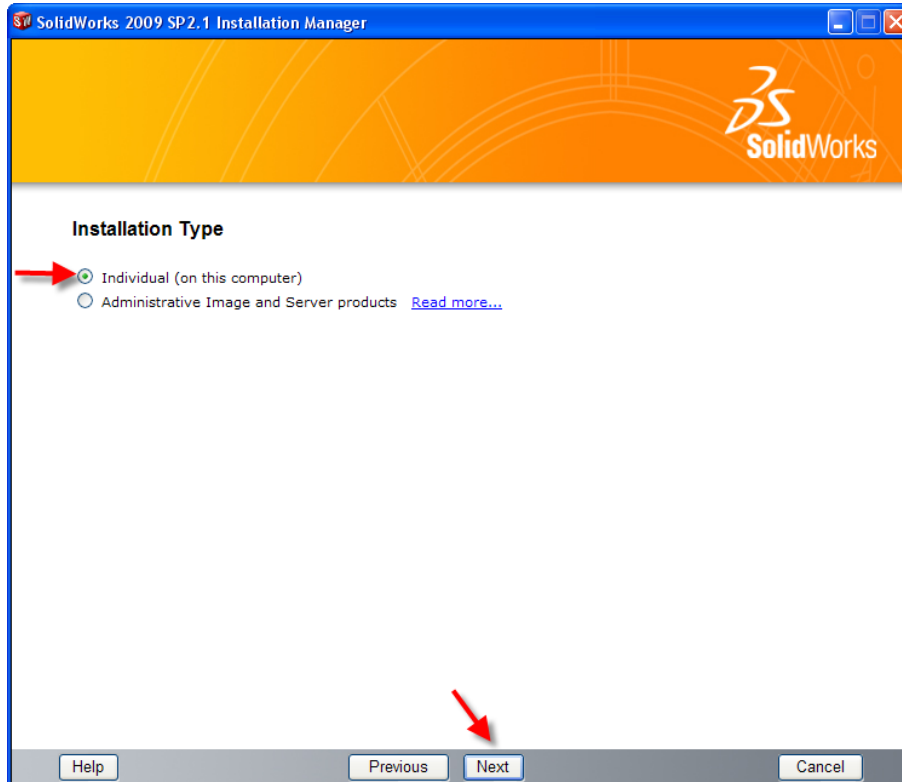
2. After you click Next, a screen will appear with your full Serial Number. Write down your serial number, click **Next**.



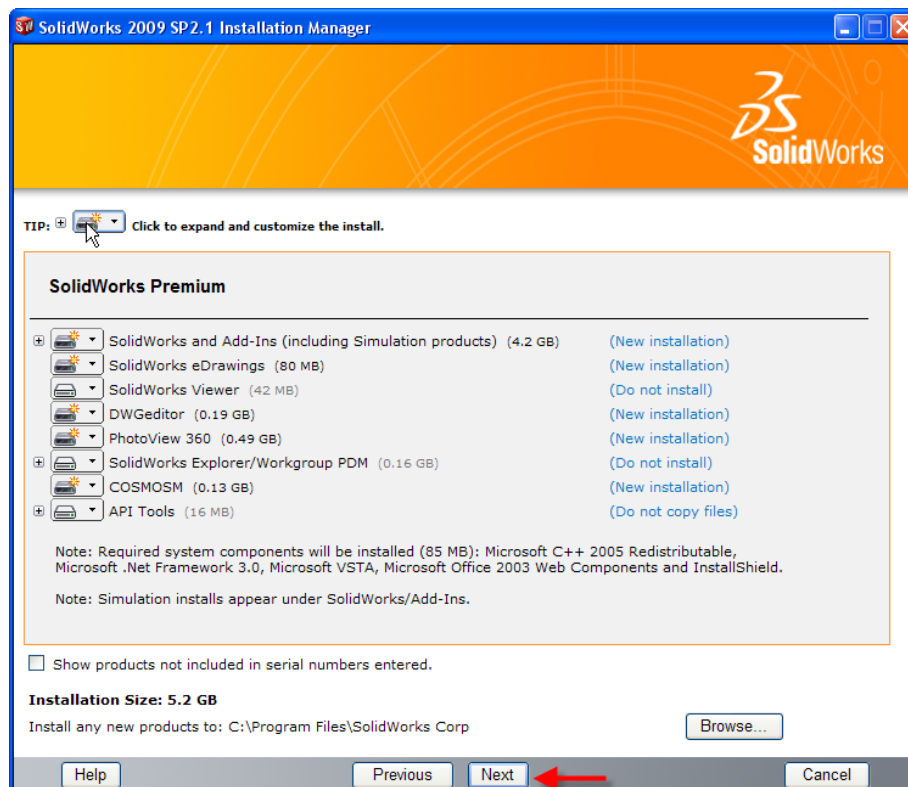
- 2b. You may see a screen that a newer version is available, **ALWAYS** select continue installing from DVD and click **Next**.



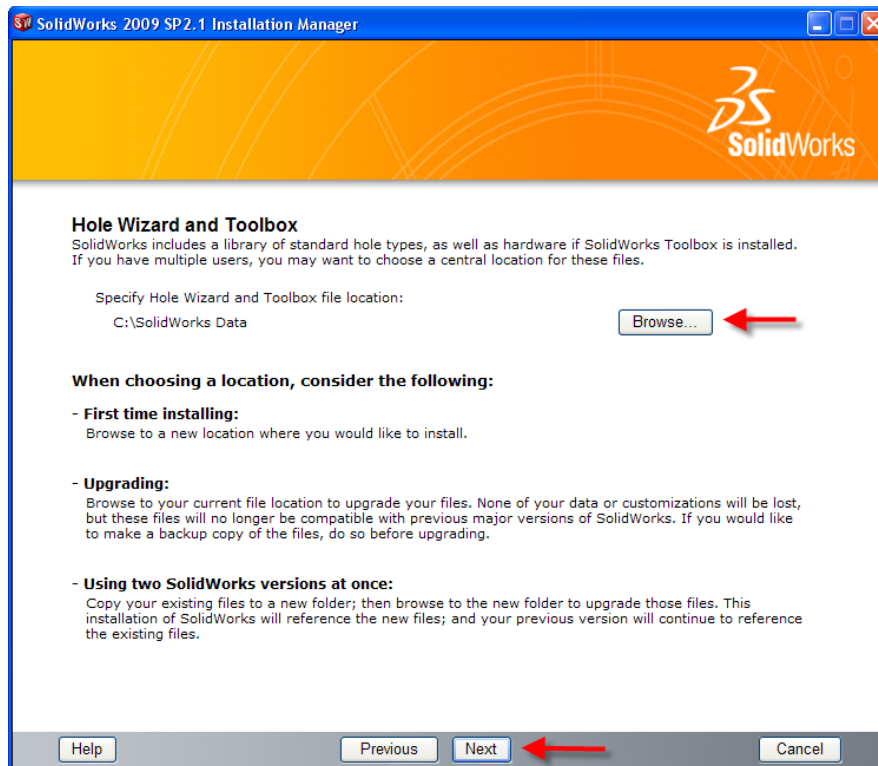
3. Select your installation type, click **Next**. For Stand Alone installation, always choose **Individual**.



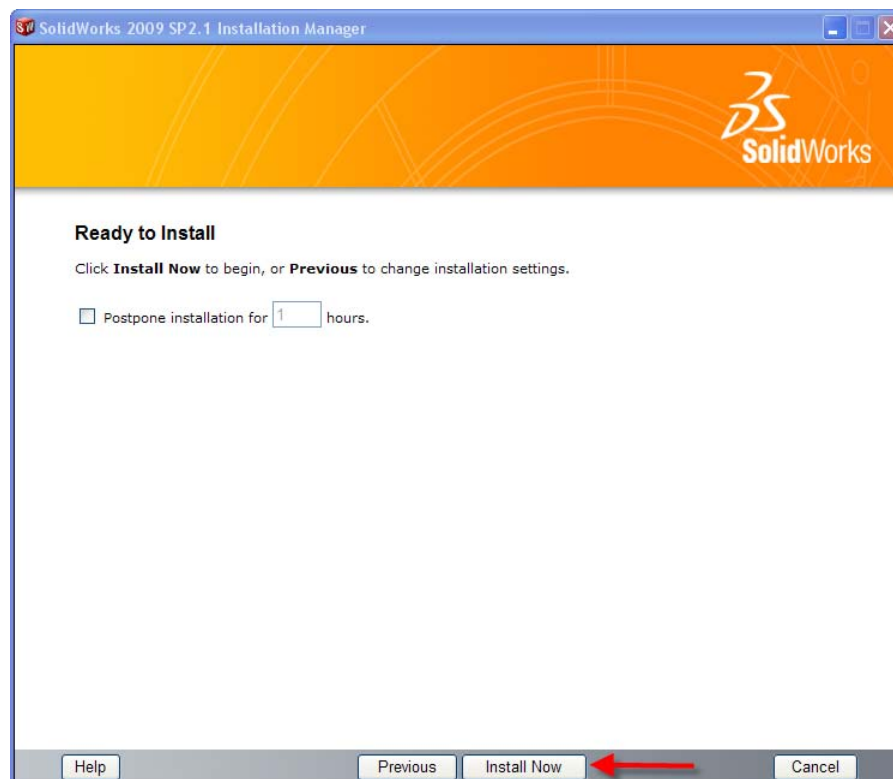
4. After you have clicked Next, the SolidWorks Setup Wizard will guide you through the installation. **Accept Defaults** on the screen (**DO NOT change anything**) Click **Next** to continue installation.



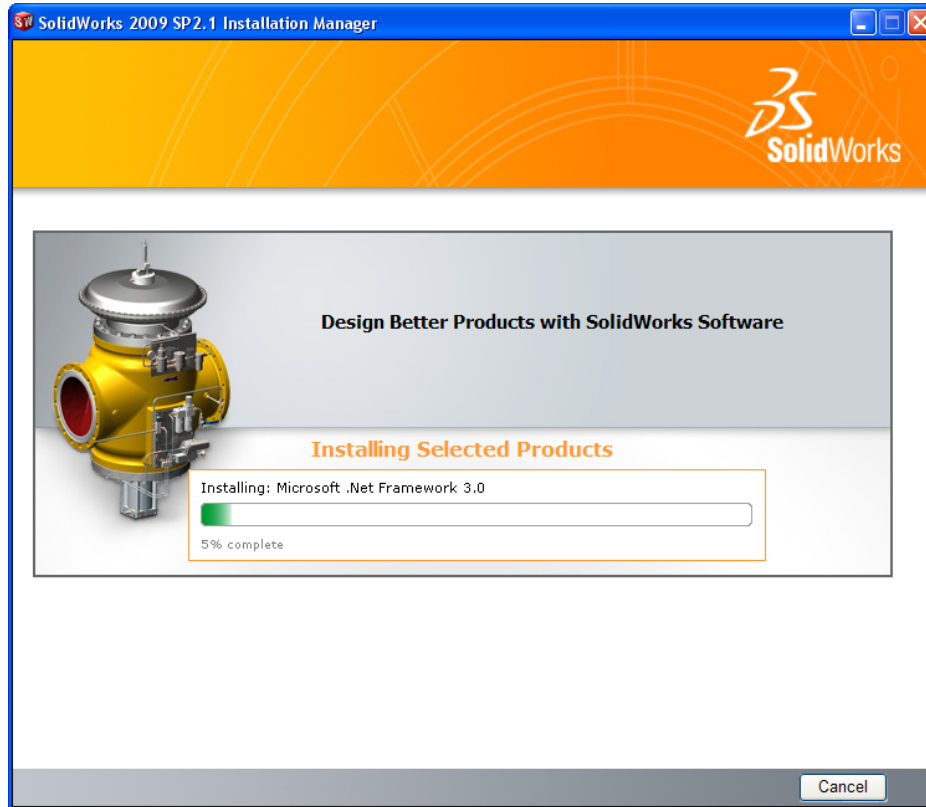
5. **Browse** to the location you would like to save **Standard Library File**. Read the descriptions within the image below for new users, existing customers and multi-version software use for more details. Once location is selected, click **Next**.



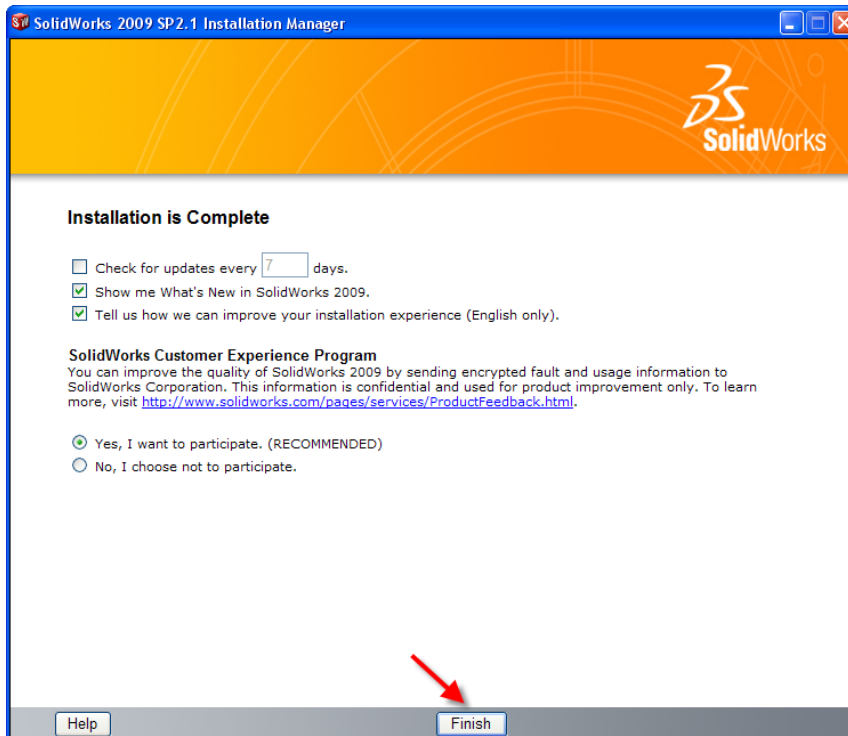
6. Ready to Install, click **Install Now**



Installation Screen:



7. Installation is Complete! Select how often you would like to receive product updates, confirm your participation in a survey, then click **Finish**.



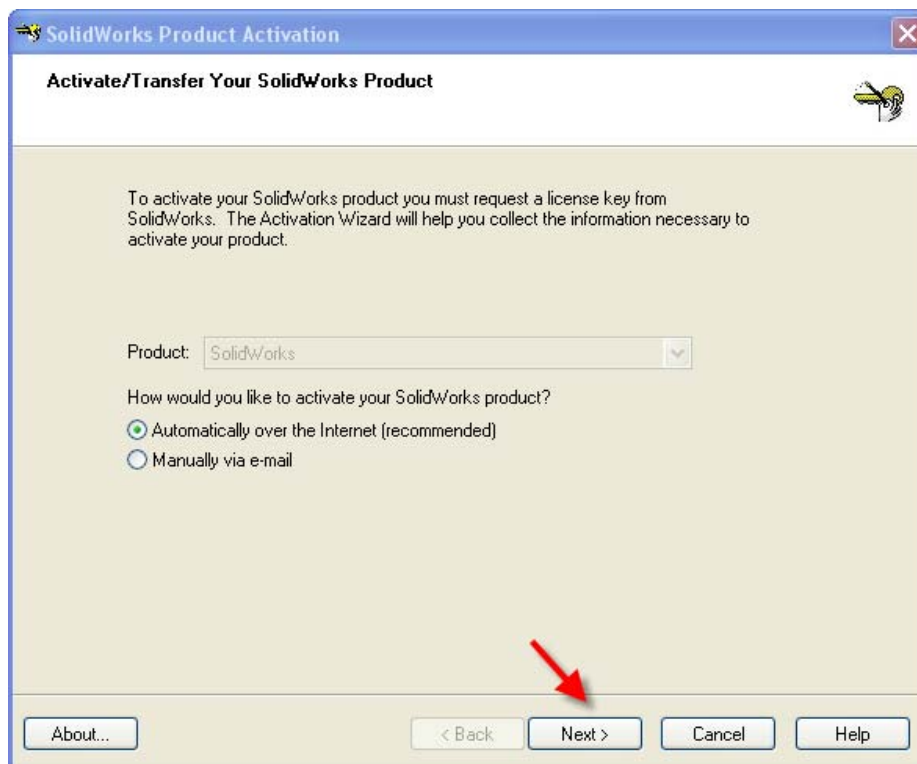
Note: Depending upon your computer configuration you may or may not need to restart your computer.

Installing SolidWorks will also install Simulation Xpress products automatically. You do not have to re-install SimulationXpress after the SolidWorks installation is complete.

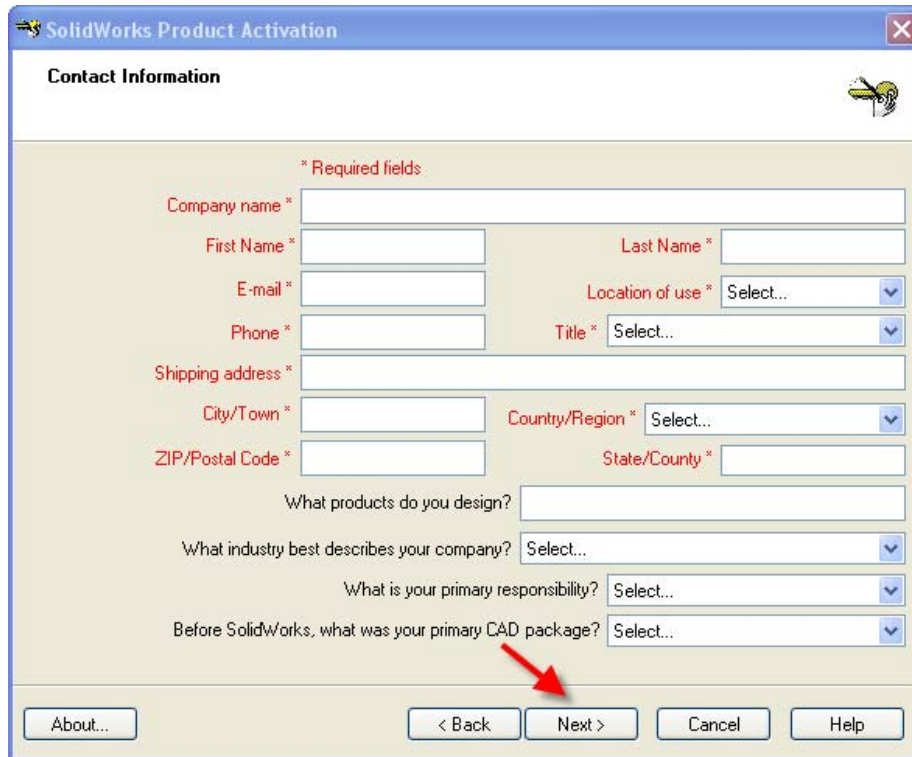
8. When you start SolidWorks Education Edition for the first time, **SolidWorks Product Activation** prompt will show. **Click Next** to continue.



9. To activate your SolidWorks product you must request a license key from SolidWorks. The Activation Wizard will help you collect the information necessary to activate your product. **Choose which method and then click Next.**



10. Fill in the appropriate fields then click **Next**.



The image shows the 'SolidWorks Product Activation' dialog box, specifically the 'Contact Information' tab. The dialog is titled 'SolidWorks Product Activation' and has a close button in the top right corner. The main area is titled 'Contact Information' and contains several input fields and dropdown menus. A red arrow points to the 'Next >' button at the bottom right of the dialog.

*** Required fields**

Company name *

First Name * Last Name *

E-mail * Location of use *

Phone * Title *

Shipping address *

City/Town * Country/Region *

ZIP/Postal Code * State/County *

What products do you design?

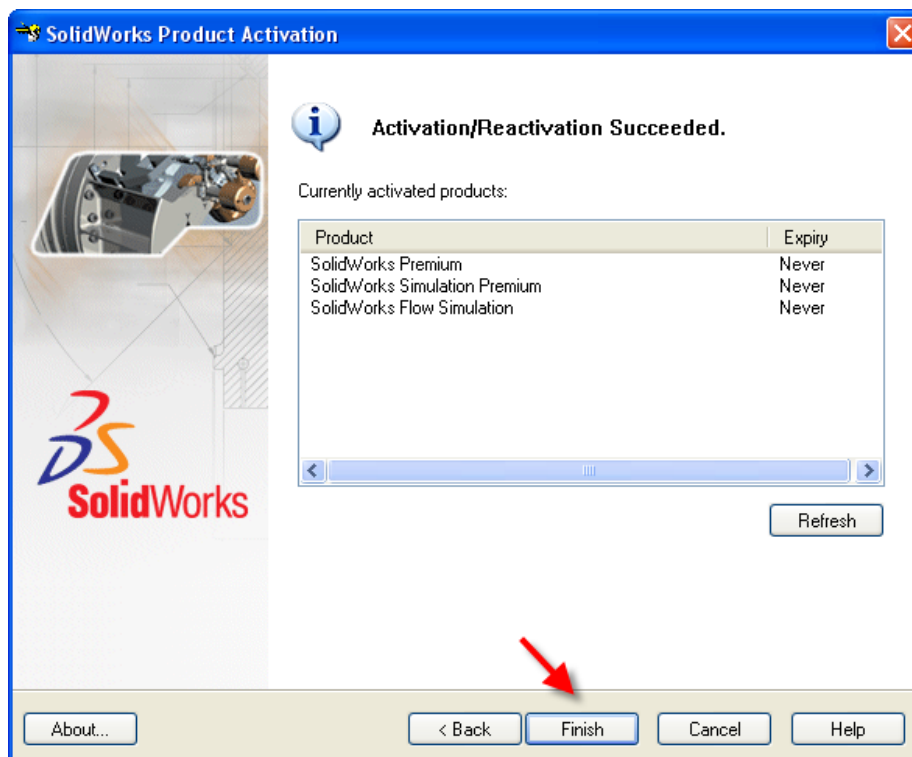
What industry best describes your company?

What is your primary responsibility?

Before SolidWorks, what was your primary CAD package?

Buttons: About... < Back **Next >** Cancel Help

11. You are now done registering your SolidWorks Education Edition. Click **Finish**.



The image shows the 'SolidWorks Product Activation' dialog box, specifically the 'Activation/Reactivation Succeeded' screen. The dialog is titled 'SolidWorks Product Activation' and has a close button in the top right corner. The main area is titled 'Activation/Reactivation Succeeded.' and contains a table of currently activated products. A red arrow points to the 'Finish' button at the bottom right of the dialog.

Activation/Reactivation Succeeded.

Currently activated products:

Product	Expiry
SolidWorks Premium	Never
SolidWorks Simulation Premium	Never
SolidWorks Flow Simulation	Never

Buttons: About... < Back **Finish** Cancel Help

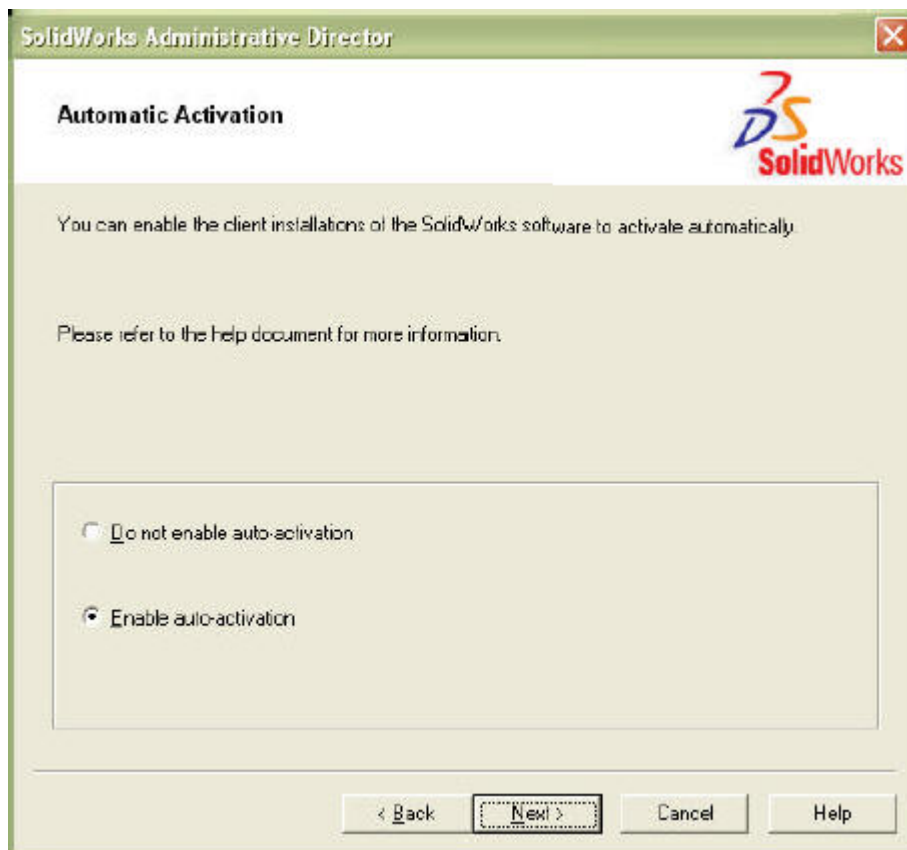
**YOU CAN NOW RUN
SOLIDWORKS EDUCATION EDITION!**

Automating Product Activation using the Administrative Director

When installing SolidWorks from an Administrative Image, it is possible to automate the Product Activation method as well. Typically, an automated installation from an Admin Image will force each seat to use a common serial number. Now that SolidWorks uses Product Activation, this is no longer acceptable since a single serial number only has two activations. The following method works in conjunction with the SolidWorks Administrative Director.

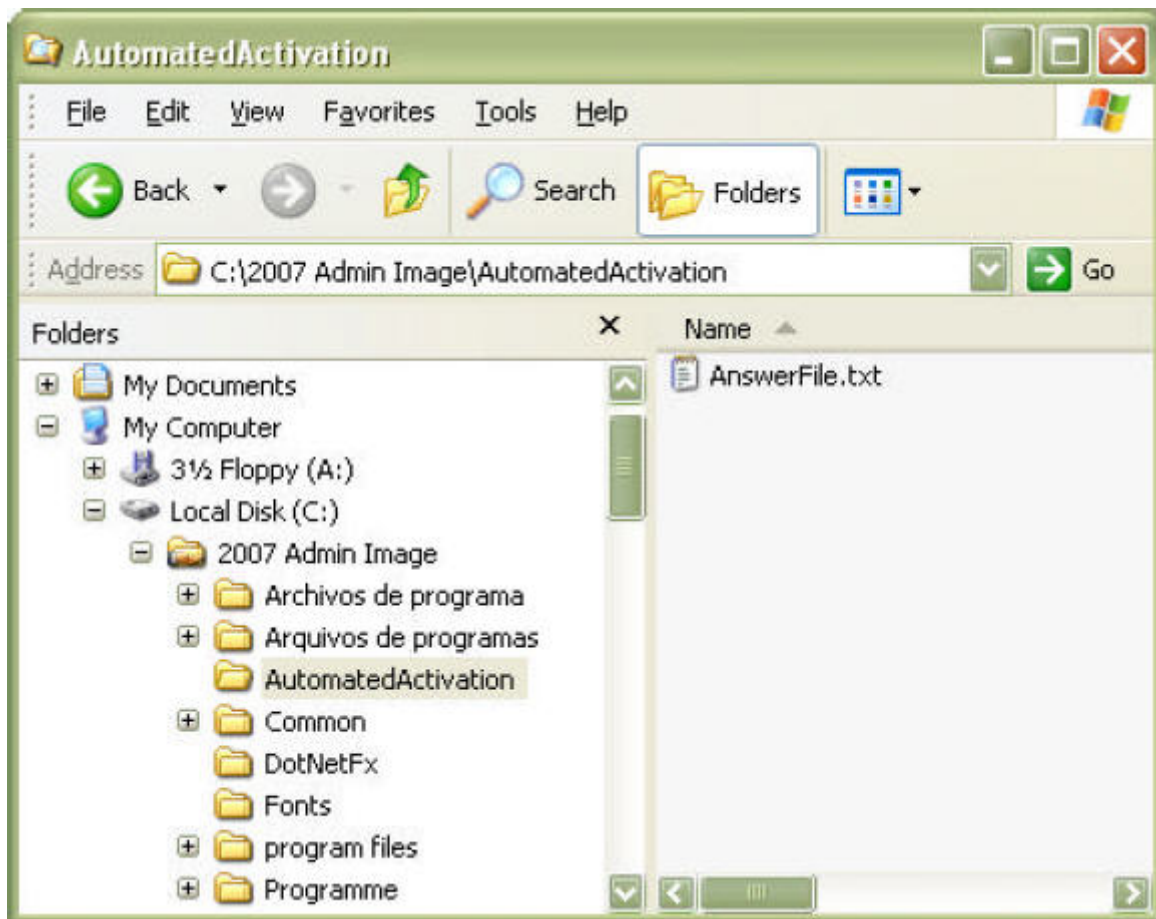
Begin to follow the steps normally taken to create your SolidWorks Admin Image. Instructions for this can be found in both the SolidWorks Installation and Administration Guide, and the Administrative Director Help file. During the Admin Image creation process, be sure to follow the steps to create a new INI file for your Admin Image.

Toward the end of the Administrative Image install, just after you are asked for a pre or post installation batch file. The Admin Director will ask if you would like to enable auto-activation or not.



Enable Auto-Activation and finish the Admin Director.

Next, pick a single serial number, and manually install the seat of SolidWorks on a client (this can be any client machine or your server machine). When the installation is finished, start SolidWorks and the Activation Wizard for that client will come up. Choose to activate via email, and you will receive an Activation Request file from the Wizard. Copy the request file and rename it to "AnswerFile.txt". Create a new folder inside your Admin Image install directory called "Automated Activation". Place the "AnswerFile.txt" file inside this folder.



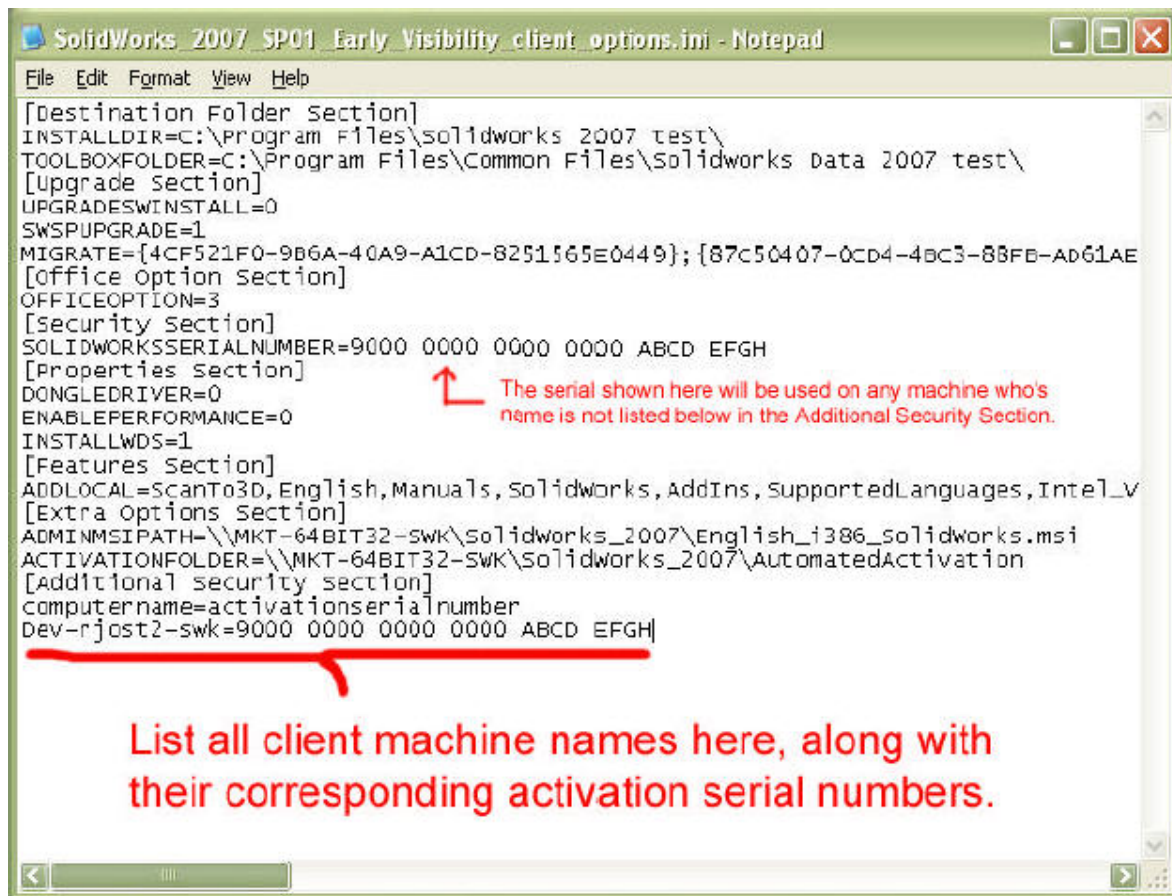
At this point, you may proceed to activate the seat of SolidWorks you just installed, or you may uninstall it if it's not needed on that particular machine. If you do proceed to activate it (either via email or internet), be sure to exclude this machine from the remainder of the steps explained below.

Next, open the SolidWorks Client Options INI file (found inside the Admin Image install folder) in WordPad or Notepad. At the bottom of this file is a section called "Additional Security Section". In this section, you must list each client machine name and its corresponding 24 digit activation serial number in the format:

Computername=serial_number

Example: TS-SAMXP-SWK=9000 0000 0000 0000 ABCD EFGH

Save the INI file when this is complete. An example of this is shown in the following image.



```
SolidWorks 2007 SP01 Early Visibility client options.ini - Notepad
File Edit Format View Help
[Destination Folder Section]
INSTALLDIR=C:\Program Files\solidworks 2007 test\
TOOLBOXFOLDER=C:\Program Files\Common Files\Solidworks Data 2007 test\
[Upgrade Section]
UPGRADESWINSTALL=0
SWSPUPGRADE=1
MIGRATE={4CF521F0-9B6A-40A9-A1CD-8251565E0449}; {87c50407-0cd4-4bc3-88fb-ad61ae}
[office Option Section]
OFFICEOPTION=3
[security Section]
SOLIDWORKSSERIALNUMBER=9000 0000 0000 0000 ABCD EFGH
[Properties Section]
DONGLEDRIVER=0
ENABLEPERFORMANCE=0
INSTALLWDS=1
[Features Section]
ADDLOCAL=ScanTo3D,English,Manuals,Solidworks,AddIns,SupportedLanguages,Intel_V
[Extra Options Section]
ADMINMSIPATH=\\MKT-64BIT32-swk\solidworks_2007\English_i386_solidworks.msi
ACTIVATIONFOLDER=\\MKT-64BIT32-swk\solidworks_2007\AutomatedActivation
[Additional security section]
computername=activationserialnumber
Dev-rjost2-swk=9000 0000 0000 0000 ABCD EFGH
```

The serial shown here will be used on any machine who's name is not listed below in the Additional Security Section.

List all client machine names here, along with their corresponding activation serial numbers.

Finally, install Solidworks using the “StartSWInstall.htm” file. If you don’t use this file, then you must use a command line which points to the INI file (see the SolidWorks Installation and Administration Guide for instructions on silent installs). When the client installations are complete, each one will silently activate as SolidWorks is launched for the first time.