

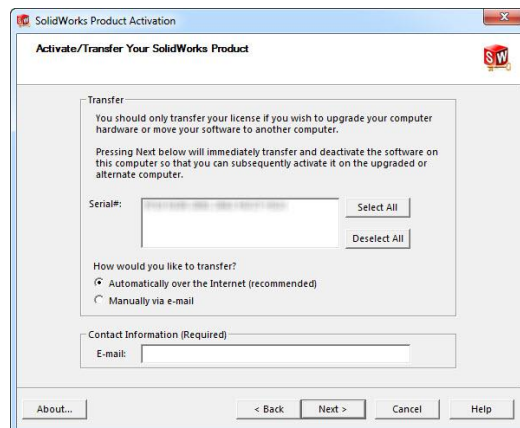
SOLIDWORKS® Education Edition 2014-2015

Installation Instructions

Preparation

- These installation instructions apply to SolidNetWork (SNL), floating licenses of:
 - SOLIDWORKS Education Edition products: CAD, Electrical and Composer
- Before proceeding with your SOLIDWORKS installation, please do the following:
 - Verify that your systems (license server and client machines) meet the criteria specified in www.SOLIDWORKS.com/System_Requirements.
 - **SOLIDWORKS 2014-2015 Education and Student products are targeted for use on Windows® 7 and Windows 8 operating systems ONLY. They will not work on Windows XP or Vista.**
 - Uninstall any alpha, beta, or pre-release versions of the SOLIDWORKS software.
 - Back up all SOLIDWORKS files you have created and wish to continue using (e.g. parts, assemblies, and drawings, document templates, sheet formats, library features, form tools, Toolbox parts (as applicable)) before upgrading to SOLIDWORKS.
 - Please note: files you open and save in SOLIDWORKS 2014 cannot be opened in earlier versions.
- To minimize disk space consumed, please consider uninstalling your older SOLIDWORKS products and using a new installation of the new SOLIDWORKS product (Education Edition users may wish to keep an older version).

If you uninstall the older version, please be sure to also uninstall Simulation products, along with older versions of eDrawings®, and other products, etc.
- You must transfer your license before upgrading your SNL Server (or if you wish to move your SNL server license to a new computer), please be sure to transfer your license before uninstalling the software. Please do this as follows:
 - Open **SolidWorks SolidNetWork License Manager** (on your license server machine), go to **Server Administration** tab.
 - Under **License Information** select **Modify**
 - New screen select **Transfer a software license** and click **Next**.
 - Select the license you are transferring and click **Next**
 - Select **Finish** after license has been transferred.



Installation

- Locate your Serial Number(s) from your product package or email from DS-SOLIDWORKS or your school. If you cannot find or you have misplaced your number, contact your local educational reseller to obtain one.
- Serial numbers vary by product type:
 - SOLIDWORKS Education Edition, the number typically begins with **9710 (Network)**

Installation and Licensing Process

Network

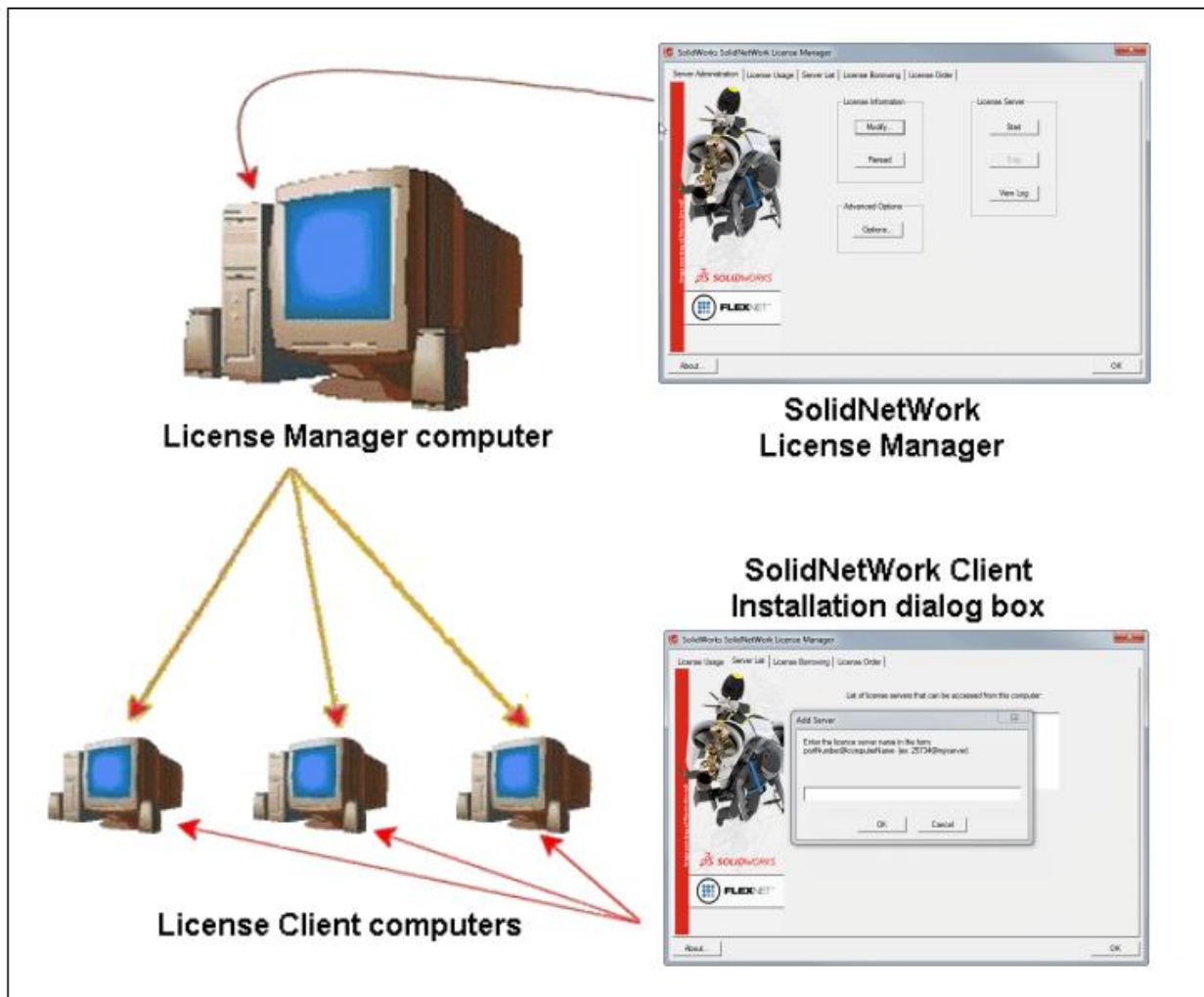
Section 1

Stand Alone

Section 2

**You are ready to begin your installation of the
SOLIDWORKS® Education Edition!
Network Users Only**

Ver. 1



Steps for Section 1: NETWORK INSTALLATION

1. Remove previous SolidNetWork (SNL) License Managers (be sure to transfer your server license first, as noted above)
2. Remove previous SOLIDWORKS software
3. Install 2014 SolidNetWork (SNL) License Manager
4. Activate your 2014 SNL Manager
5. Install SOLIDWORKS software on individual clients

Section 1 | SOLIDWORKS® Education Edition SNL Manager Installation (Network)

Note: If you are installing SOLIDWORKS on a Network with Restricted Rights, please go to the Customer Portal for additional documentation or contact your local reseller for assistance.

This step is only for users who are on NETWORK. If you purchased a Standalone license, please proceed to Section 2 of the installation process.

Note:

- All previous SOLIDWORKS License Managers must be removed from your computer before beginning the installation of the new SOLIDWORKS License Manager (i.e. 2013 must be removed before installing 2014).
- The SOLIDWORKS License Manager must be installed on the machine that will be used to distribute SOLIDWORKS licenses on your network.
- The SOLIDWORKS License Manager for 2014 will license all SOLIDWORKS EDU Edition applications, including SOLIDWORKS Simulation, SOLIDWORKS Sustainability, eDrawings and PhotoView 360, etc.

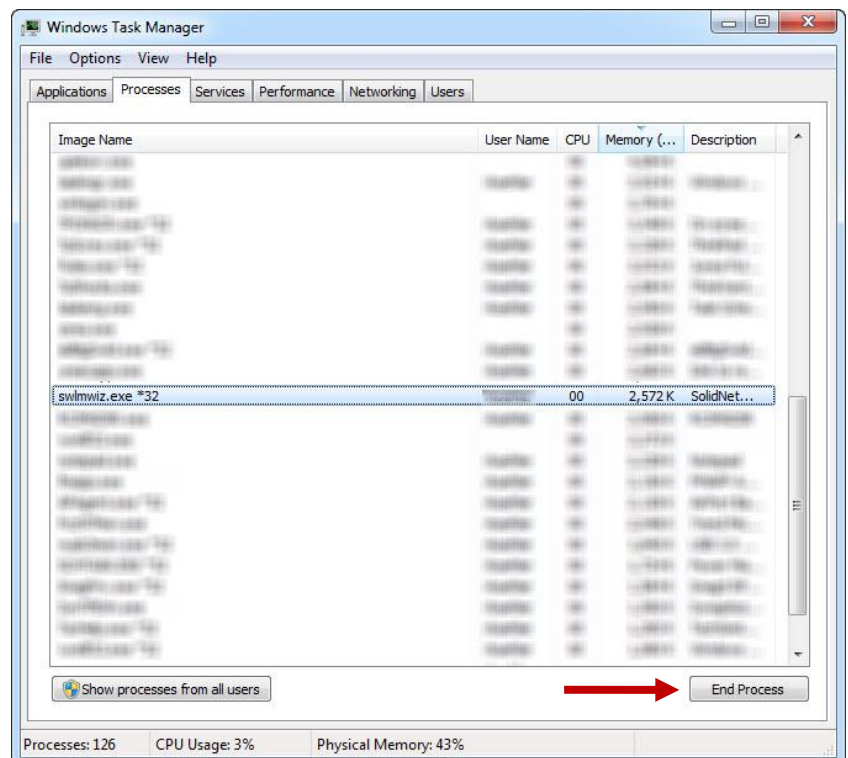
Remove previous SolidNetWork License Managers (SNL)

Please note, the 2014 SNL Manager is designed to run on Window® 7 (Sp1 or later), Windows 8, Windows 8.1, Windows Server 2008, Windows Server R2 (Sp1) or Windows Server 2012 machines (it will NOT run on Windows XP, Vista or Windows Server 2003). Please refer to www.solidworks.com/systemrequirements for more information.)

1. Stop the Licensing Service on the host machine using Windows Task Manager as follows:

With the SolidNetWork license manager running, open the Windows Task Manager.

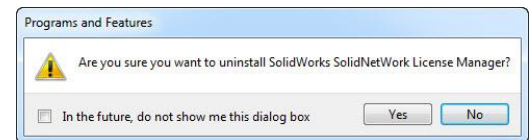
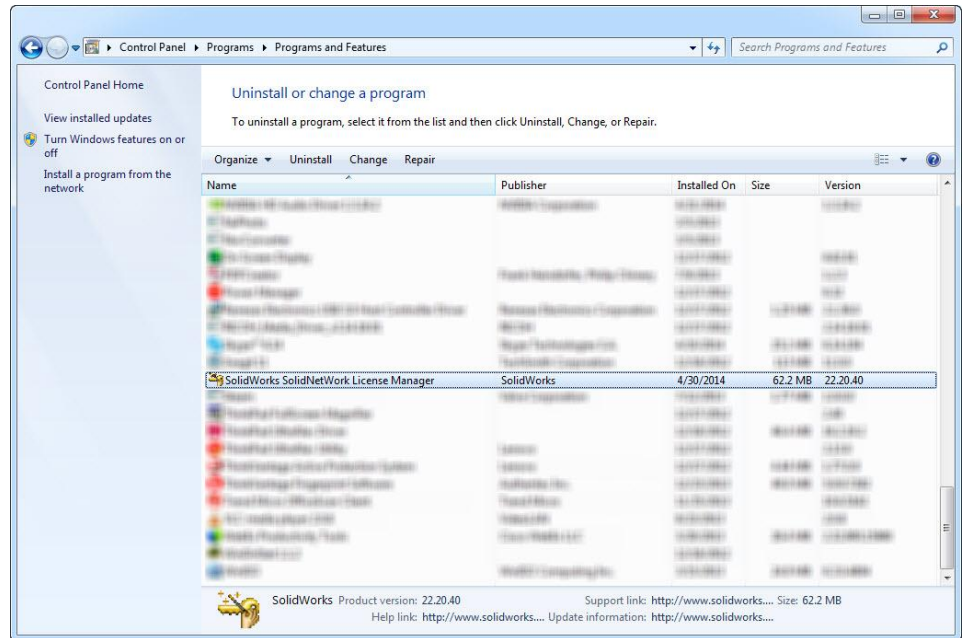
On the Applications tab, browse to the SolidNetWork license manager then right-mouse-click and select **Go to Process**. Then select **End Process** to stop the process (see image for Windows 7).



2. Launch **Add/Remove Programs** and uninstall the previous version of the **SolidWorks SolidNetWork License Manager**.

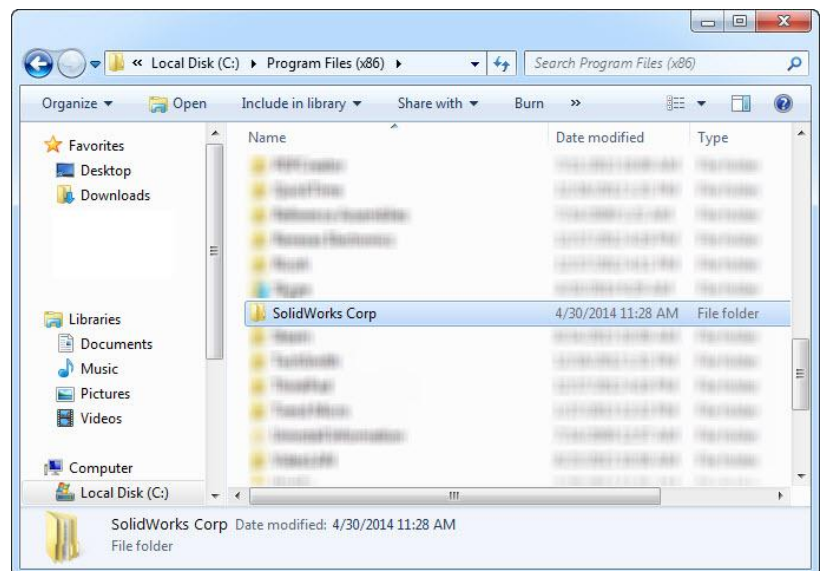
Access Add/Remove programs from **Start > Control Panel > Add/Remove Programs**. Locate the **SOLIDWORKS SolidNetWork License Manager** and select **Remove**.

- Once the remove option is selected you will be prompted to confirm the products to uninstall.
- The product will then uninstall. A progress only box will appear.



- After the product uninstall is complete, close the Add/Remove programs window and launch Windows Explorer.

Locate the folder where the license manager was previously installed and delete it. By default the license manager is installed to: **C:\Program Files\SOLIDWORKS SolidNetWork License Manager**.



Remove previous SOLIDWORKS Software from client machines

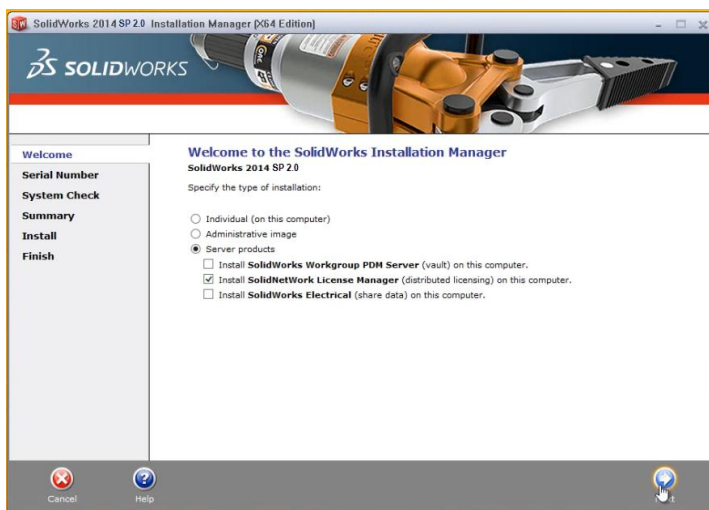
1. If required, uninstall SOLIDWORKS using Add/Remove Programs.
2. If required, delete SOLIDWORKS folders located in **C:\Program Files\SolidWorks Corp**

Begin 2014 SolidNetWork License (SNL) Manager Install

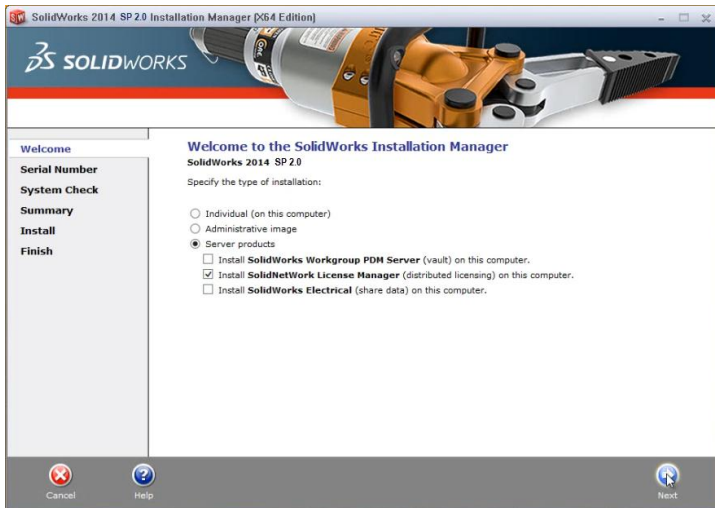
1. Insert your 2014 SOLIDWORKS DVD in your local DVD Drive to begin the software installation process. If SOLIDWORKS Master Setup does not come up automatically, select My Computer and double click the DVD drive, this is generally your D: drive. You may also launch the Installation Manager downloaded from the SOLIDWORKS Customer Portal by browsing to your download and select “**setup.exe**”.

Note: Once DVD is placed in your local DVD Drive, the SOLIDWORKS 2014 Sp2.0 Installation Manager will appear. Select Server products and then select “Install SolidNetWork License Manager (distributed licensing) on this computer.”

Select Next.

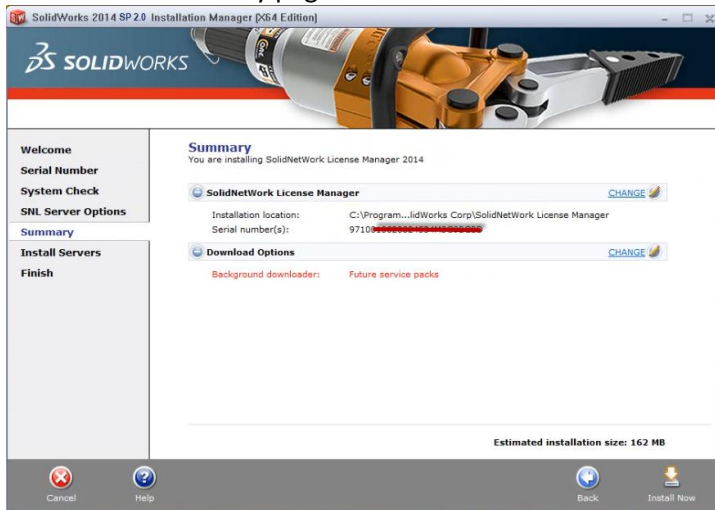


2. The next screen will prompt you for your SOLIDWORKS and associated products serial number. Enter your product serial number. Select **Next**.

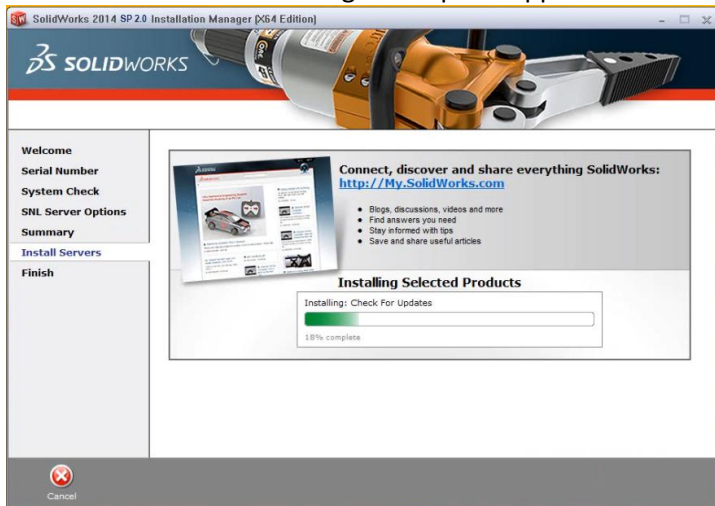


3.

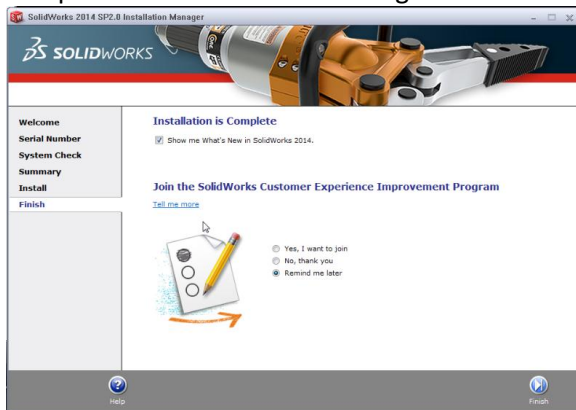
Confirm the Summary page and click “Install Now”.



Note: Server Installation Progress will appear. Once done checking for Updates, the SOLIDWORKS SolidNetWork License Manager Setup will appear. Click **Next**.



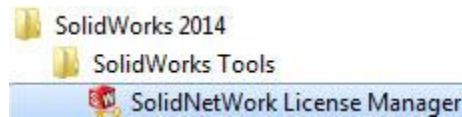
4. After the installation is complete there will be a confirmation of the successful install. Once completed the Installation Manager confirms the product(s) are installed correctly.



5. Select **Finish** and close the Installation Manager. This completes the installation of the SOLIDWORKS SolidNetWork License Manager. Please tell us your installation experience, the following Survey will be displayed in your Internet Browser. Thank you for your feedback.

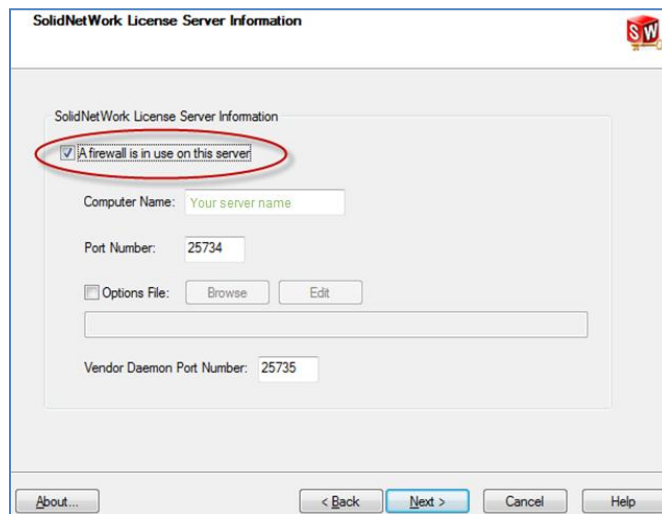
Activate 2014 SolidNetWork (SNL) License

Beginning with SOLIDWORKS 2010 release, a new licensing method has been introduced for network licenses. The new process will require internet connectivity to 'activate' the license on the SOLIDWORKS server. What does this mean for the user? The end user will no longer need a license file or existing dongle. The dongle must be returned to your value added reseller.



1. To activate the newly installed software go to **Start > All programs > SOLIDWORKS 2014 > SOLIDWORKS License Manager > SolidNetWork License Manger**.

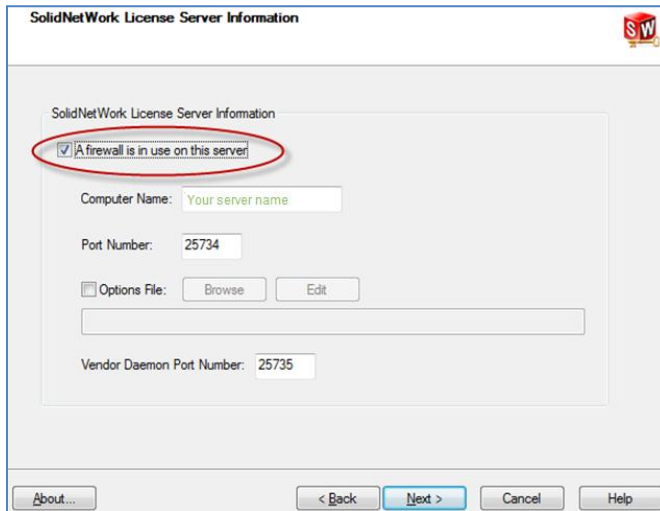
A server information dialog will appear that will allow you to choose the license server port(s) and apply an options file if desired. It is recommended that you select the option for firewall in use on this server. Select **Next** to continue.



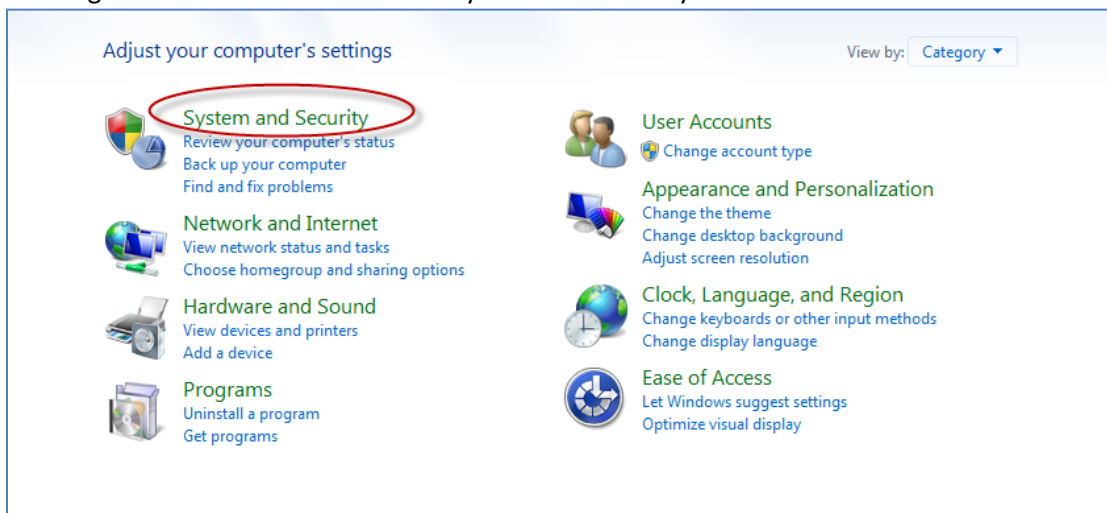
Note: You will need to add exceptions in your firewall software, example shown is Windows® 7 Firewall settings on the next page. For Windows 7, go to Windows 7 settings.

For Windows® 7 Firewall

1. Add program exceptions to the Windows 7 Firewall.
In SNL Server setup, change image to show that the Windows firewall option is selected.

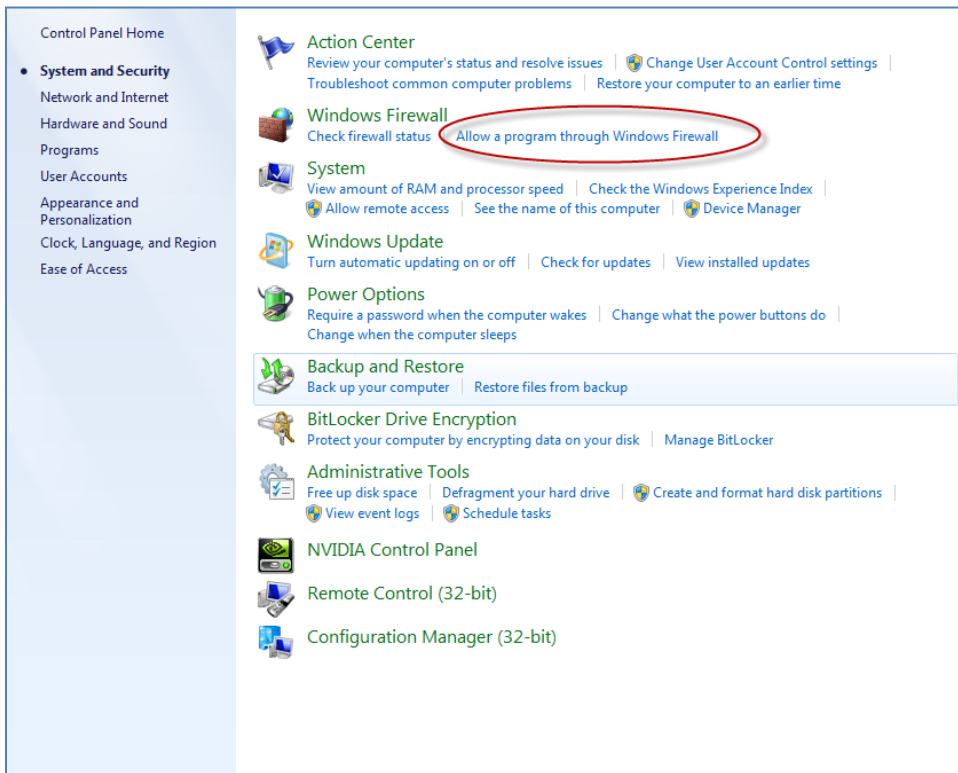


2. Please go to Control Panel and select System and Security



For Windows 7 Firewall (con't)

3. Allow programs through the firewall.



For Windows 7 Firewall (con't)

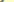
4. Click “allow another program”

Allow programs to communicate through Windows Firewall

To add, change, or remove allowed programs and ports, click [Change settings](#).

What are the risks of allowing a program to communicate?

 Change settings

 For your security, some settings are managed by your system administrator.

[illegible]

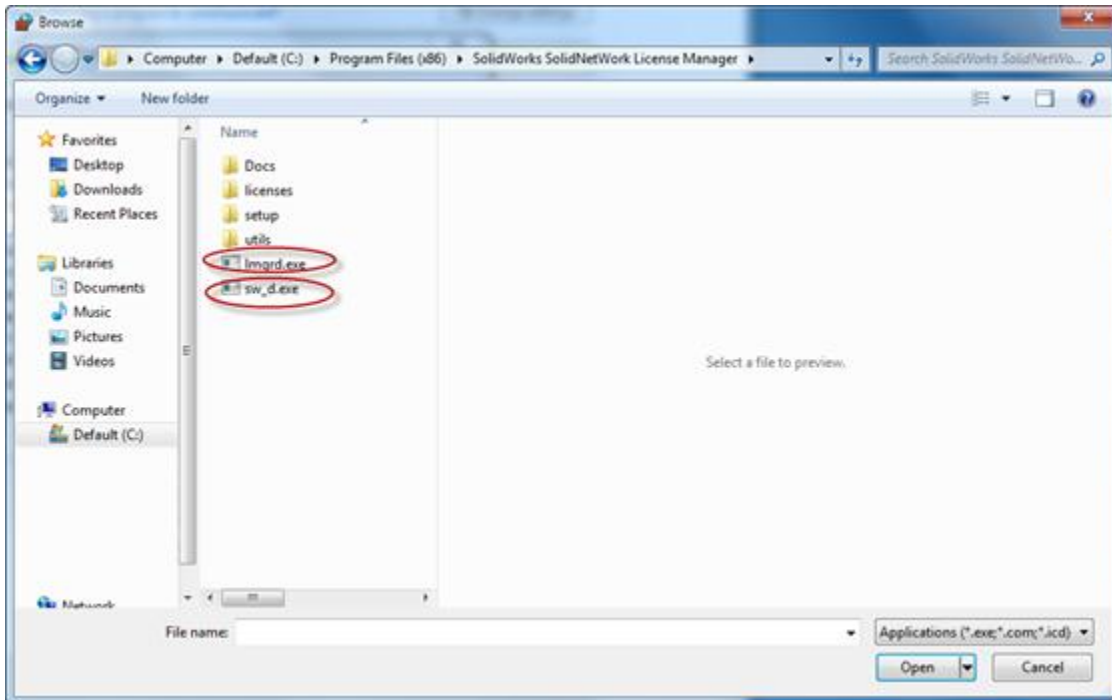
Allow another program...

OK

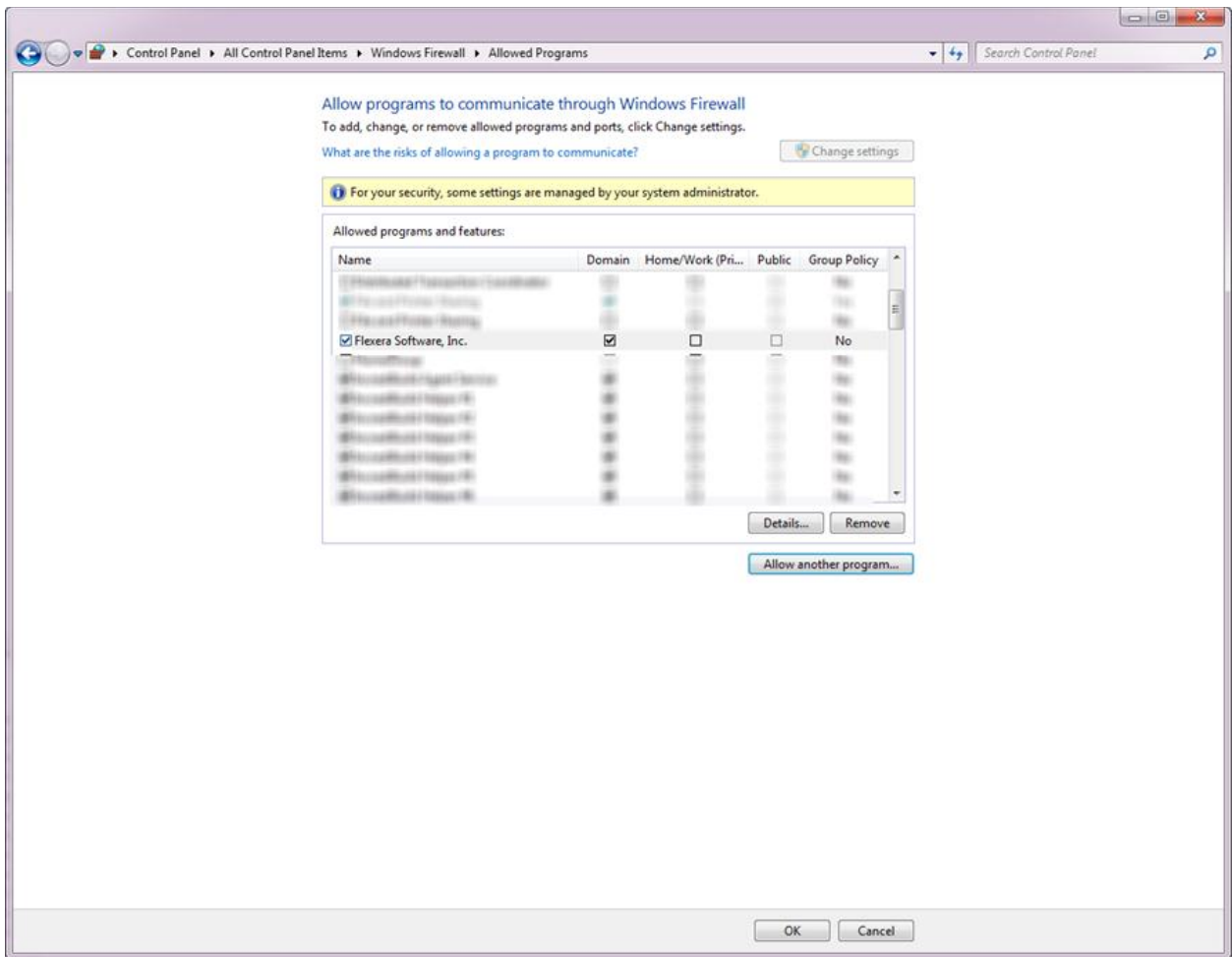
Cancel

For Windows 7 Firewall (con't)

And Browse to the folder where you installed the SOLIDWORKS SolidNetWork License Manager.
Add both executables: **Lmgrde.exe** and **sw_d.exe**



When **Lmgrde.exe** is added successful to the exceptions list, it will appear as 'Acreesso Software Inc.' in the list of Allowed programs and features:




For Windows 7 Firewall


When **sw_d** is allowed successfully, it will as **sw_dn** in the allowed programs list.

Allow programs to communicate through Windows Firewall

To add, change, or remove allowed programs and ports, click Change settings.

What are the risks of allowing a program to communicate?

 Change settings

 For your security, some settings are managed by your system administrator.

Allowed programs and features:

Name	Domain	Home/Work (Pri...	Public	Group Policy
<input type="checkbox"/> Windows Firewall/Windows Firewall	<input type="checkbox"/>	<input type="checkbox"/>	<input type="checkbox"/>	No
<input type="checkbox"/> Windows Firewall/Windows Firewall	<input type="checkbox"/>	<input type="checkbox"/>	<input type="checkbox"/>	No
<input type="checkbox"/> Windows Firewall/Windows Firewall	<input type="checkbox"/>	<input type="checkbox"/>	<input type="checkbox"/>	No
<input type="checkbox"/> Windows Firewall/Windows Firewall	<input type="checkbox"/>	<input type="checkbox"/>	<input type="checkbox"/>	No
<input type="checkbox"/> Windows Firewall/Windows Firewall	<input type="checkbox"/>	<input type="checkbox"/>	<input type="checkbox"/>	No
<input type="checkbox"/> Windows Firewall/Windows Firewall	<input type="checkbox"/>	<input type="checkbox"/>	<input type="checkbox"/>	No
<input checked="" type="checkbox"/> sw_dn	<input checked="" type="checkbox"/>	<input type="checkbox"/>	<input type="checkbox"/>	No
<input checked="" type="checkbox"/> Trend Micro OfficeScan Listener	<input type="checkbox"/>	<input type="checkbox"/>	<input checked="" type="checkbox"/>	No
<input type="checkbox"/> Windows Firewall/Windows Firewall	<input type="checkbox"/>	<input type="checkbox"/>	<input type="checkbox"/>	No
<input type="checkbox"/> Windows Firewall/Windows Firewall	<input type="checkbox"/>	<input type="checkbox"/>	<input type="checkbox"/>	No
<input type="checkbox"/> Windows Firewall/Windows Firewall	<input type="checkbox"/>	<input type="checkbox"/>	<input type="checkbox"/>	No
<input type="checkbox"/> Windows Firewall/Windows Firewall	<input type="checkbox"/>	<input type="checkbox"/>	<input type="checkbox"/>	No

Details...

Remove

Allow another program...

OK

Cancel

SolidNetWork License (SNL) Install

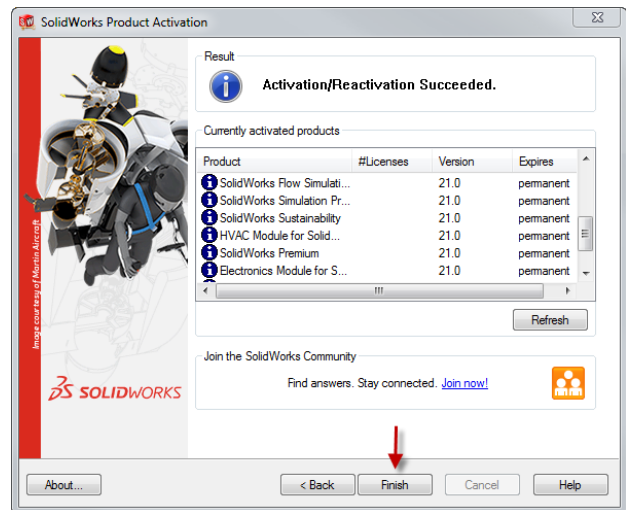
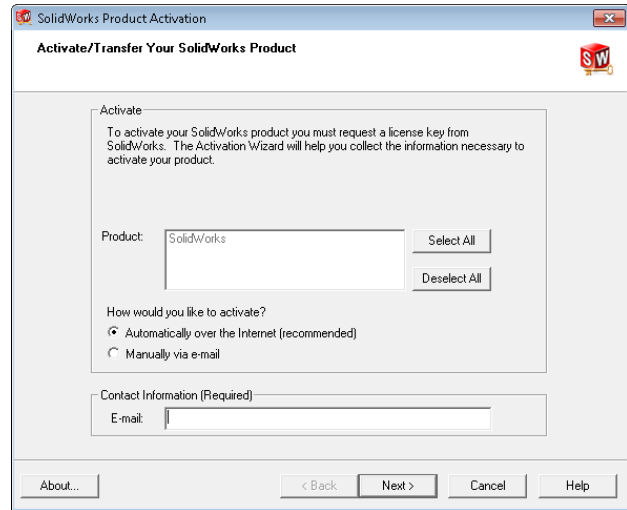
The SOLIDWORKS Product Activation window will appear and you will be required to provide an email to associate to the activation. Enter an email address and select **Next**.

Note: If you do not have internet access (or email), please contact your Value Added Reseller.

The product will now activate via internet.

After a successful activation there will be a succeeded message which will show all the products associated with your serial number.

Select **Finish**, completing activation. The license manager will appear and you can close it out to complete the activation process.



SolidNetWork License (SNL) Install is complete.

NOTE: You have now finished installing the SOLIDWORKS License Manager.

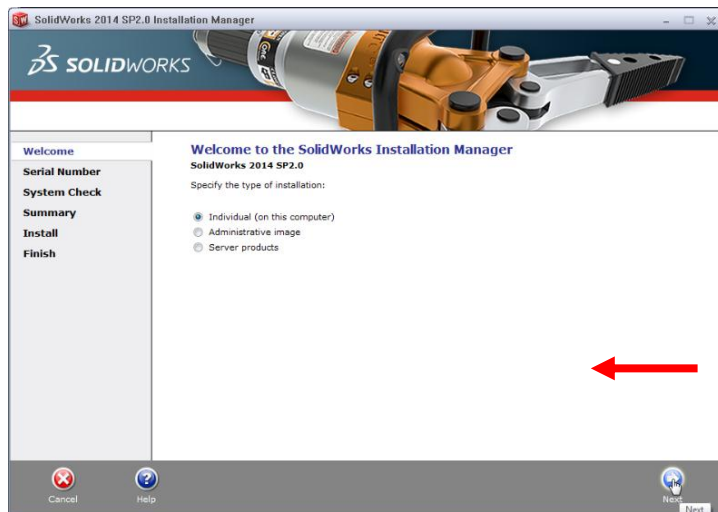
- You must now go to your client computers and proceed as follows on steps.
- Before beginning the installation process, please be sure to close out of all SOLIDWORKS programs currently open on your computer.
- You can also install SOLIDWORKS on your server machine. Follow the instructions in the next section.

Section 2 | SOLIDWORKS® Education Edition Installation (Client installation)

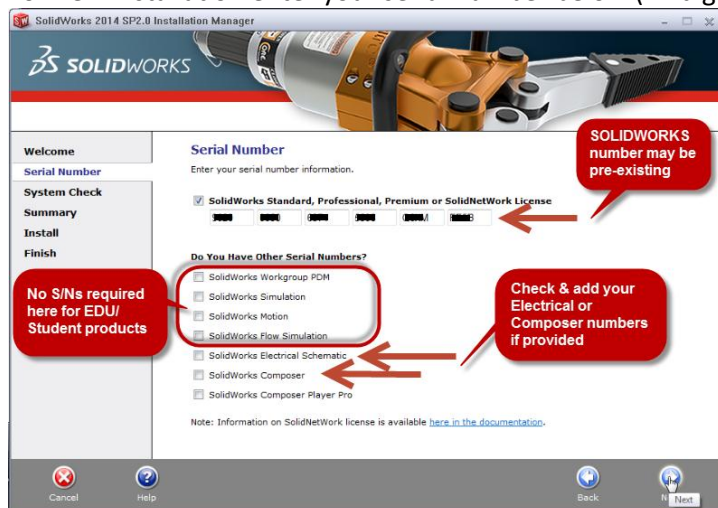
Note: for SOLIDWORKS Network installations, the software does not get installed on the network machine (License Server) by default. Normally SOLIDWORKS should be installed on the user machines (Client).

Before beginning the installation process, please be sure to close out of all SOLIDWORKS programs currently open on your computer.

1. On the CLIENT Machine Insert DVD or launch the Installation Manager downloaded from the SOLIDWORKS Customer Portal. Select Individual (on this computer). Click Next in lower right corner.



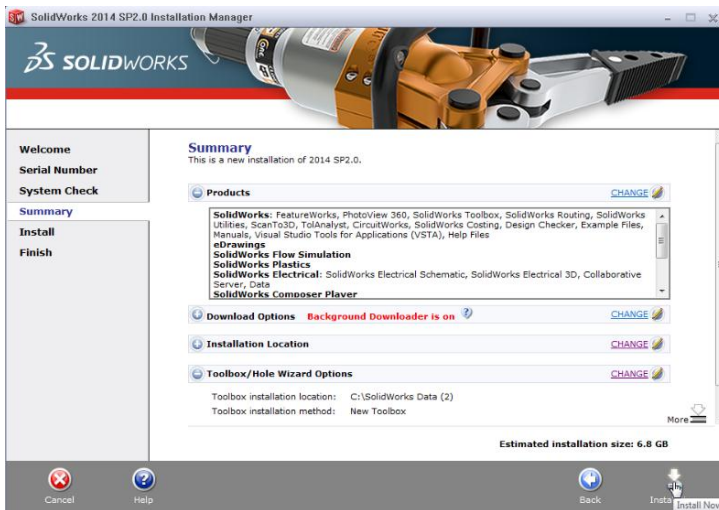
2. For new installation enter your serial number below (24 digits). Click Next.



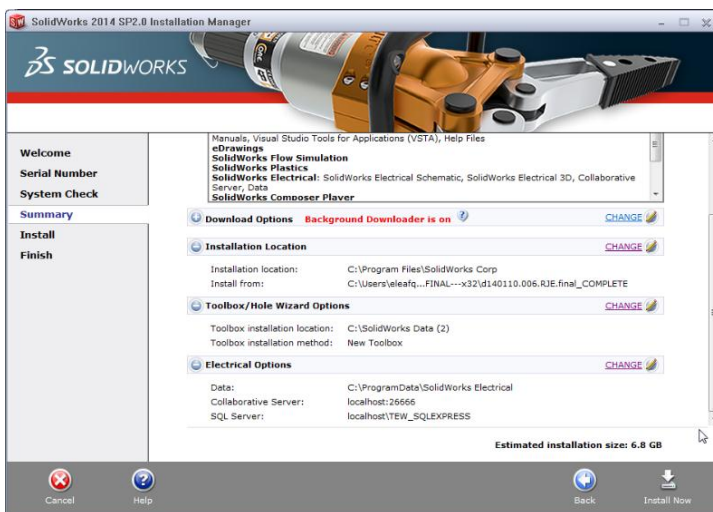
Note: the message in the center of the window under the green bar, "Connecting to SOLIDWORKS" will appear. You may see a screen stating that a newer version is available, ALWAYS select continue installing from DVD and click Next.

3. After you have clicked Next, the SOLIDWORKS 2014 SP2.0 Installation Manager will guide you through the

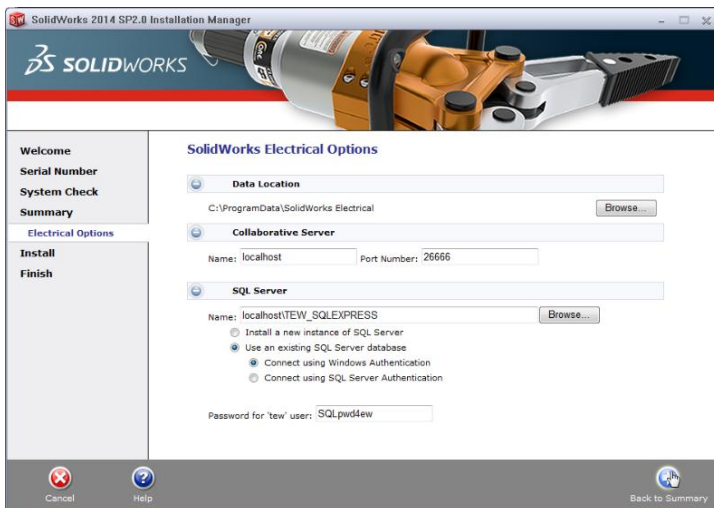
installation. Accept Defaults on the screen (DO NOT change anything) Click Install Now to continue installation.



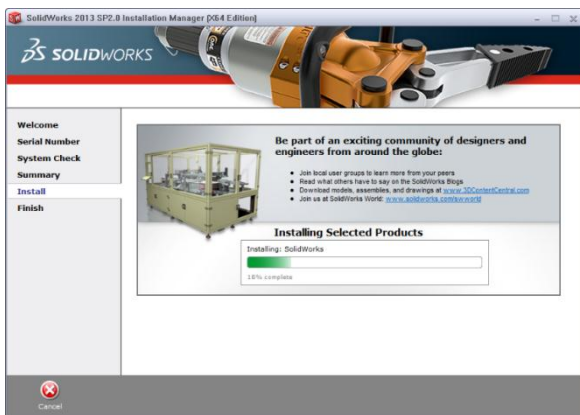
Optional: if you have purchased a license for a SOLIDWORKS Electrical products and have entered a serial number (separate Serial Number for Student products only) you will also see the following information (default selections shown).



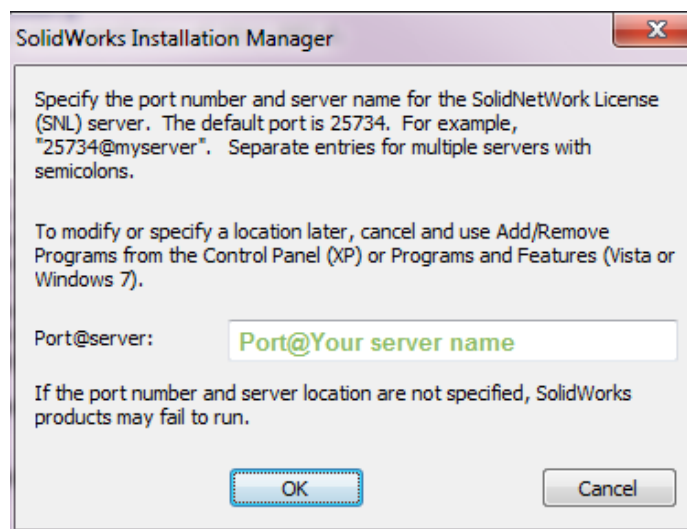
Expand the 'Electrical Options' as desired to check values and setting (default values shown below).

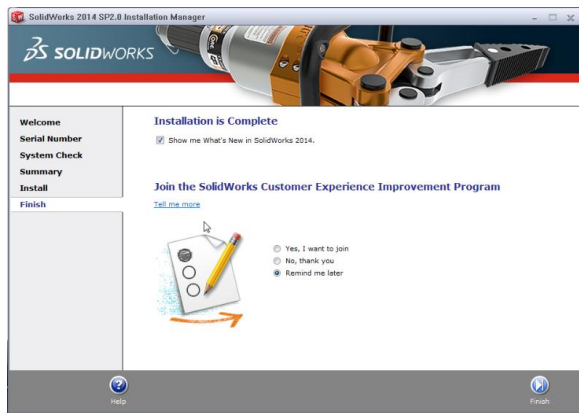


Return '**Back to Summary**' then select "**Next**" to start the installation.

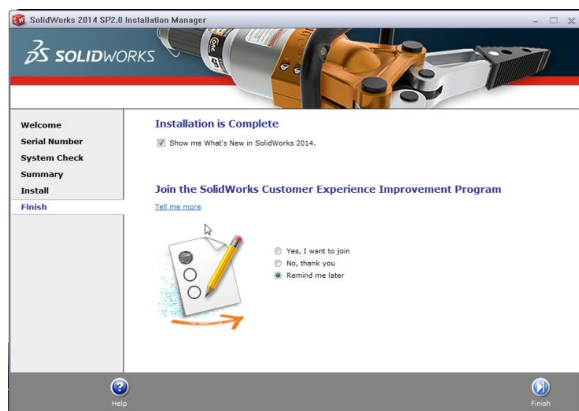


Note: **For the client installation of a network license, you will be asked for your license server name as below.** Please enter your license server and the port number that you specified in the server setup steps. The default port is 25734. Enter it as portNumber@computerName. Then click "OK"





4. Installation is Complete! Confirm if you would like to tell us your installation experience in a survey or participate in the Customer Experience program, then click **Finish**.



Note: Depending upon your computer configuration you may or may not need to restart your computer. Installing SOLIDWORKS will also install Simulation and Sustainability products automatically. You do not have to re-install Simulation after the SOLIDWORKS installation is complete.

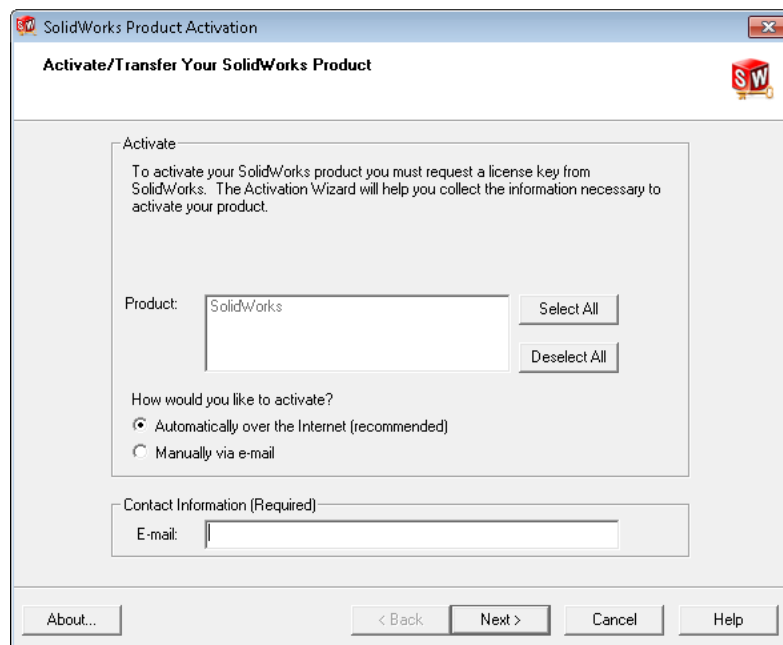
For client installation of a network license, your SOLIDWORKS is ready now since your network license server has been activated in Section 1 and your client SOLIDWORKS is connected with your license server.

=====

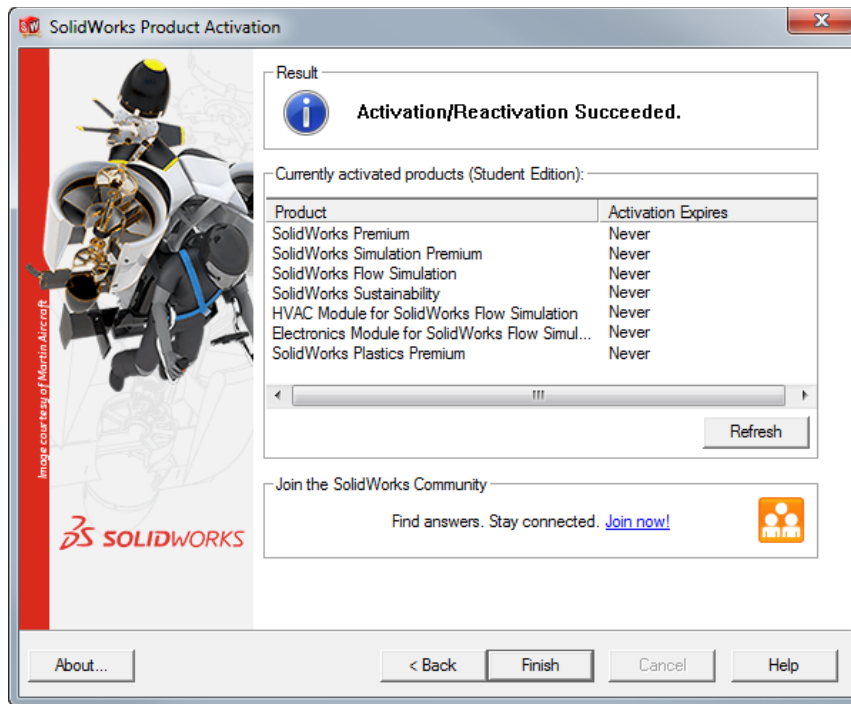
For **STANDALONE** license installation, when you start SOLIDWORKS Education Edition for the first time, the SOLIDWORKS Product Activation dialog will appear to guide you through the activation process. Click Next, to continue with activation. (Please refer to the separate SOLIDWORKS Education Edition Standalone license installations for more detail.



To activate you SOLIDWORKS product you must enter a serial number from SOLIDWORKS. The SOLIDWORKS Product Activation will help you collect the information necessary to activate your product. Choose which method for how you would like to activate. Enter your email address and then click **Next**.



Now you are done registering your SOLIDWORKS Education Edition. Click **Finish**.



**You can now run your SOLIDWORKS® Education Edition
(Standalone license)!**