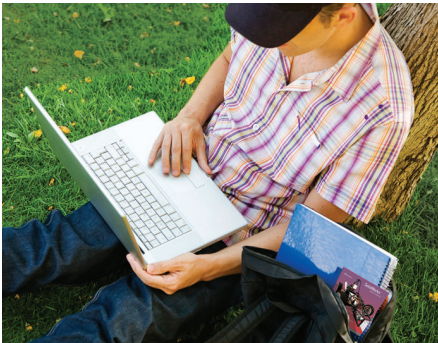


SOLIDWORKS STUDENT ACCESS PRODUCT MATRIX



SolidWorks Student Access offers a range of solutions to SolidWorks Education Edition customers – giving them the freedom to get SolidWorks into student’s hands. Please review the product matrix to determine the right solution.

Subscription service required for Student Engineering Kit (SEK) & Student Design Kit (SDK); Network License Borrowing available to both subscription and non-subscription service customers. Product features are as outlined below.

3D DESIGN PRODUCT FEATURES	Student <i>ENGINEERING</i> Kit	Student <i>DESIGN</i> Kit	Network License Borrowing
Part and Assembly Modeling			
3D Solid Modeling	●	●	●
Large assembly design capabilities	●	●	●
Advanced surfacing	●	●	●
Sheet metal	●	●	●
Weldments	●	●	●
Mold Design	●	●	●
Read PCB data as 3D parts	●	●	●
Direct model modification	●	●	●
Full ECAD-MCAD data exchange	●		●
Piping/tubing Design	●		●
Electrical Cable/Harness design	●		●
2D Drawings			
Automatic Drawing View Creation	●	●	●
Automatic Drawing View Updates	●	●	●
Dimensioning	●	●	●
Annotation	●	●	●
Bills of Materials, cut lists	●	●	●
Automatic hole tables, weld tables, and pipe bending data	●	●	●
International standards support	●	●	●
Drawing Control (compare)	●	●	●
Standards Checking	●		●
Flattened harness drawings	●		●

3D DESIGN PRODUCT FEATURES

Student
ENGINEERING
Kit

Student
DESIGN
Kit

Network
License
Borrowing

Design Reuse and Automation

SolidWorks Search	●	●	●
Design Automation	●	●	●
Configurations	●	●	●
Design Library	●	●	●
3D Models from Suppliers	●	●	●
Smart Components and Smart Fasteners	●	●	●
Standard Component Library	●	●	●
Task Scheduler	●		●

Animations and Rendering

Assembly animation	●	●	●
Walk-through/fly through animations	●	●	●
Photorealistic rendering	●		●

Design Validation and Simulation

Collision and Interference Detection	●	●	●
Hole Alignment checks	●	●	●
Check manufacturability	●	●	●
Fluid flow simulation	●	●	●
Sustainability	●	●	●
Draft and undercut analysis	●	●	●
Tolerance stack-up analysis	●		●
Kinematic motion simulation	●		●
Structural validation	●		●

Collaborate and Share

Import/export	●	●	●
3D for rapid prototyping	●	●	●
Utilize 2D DWG/DXF data	●	●	●
Protect design information while sharing	●	●	●
eDrawings	●	●	●
eDrawings Professional	●		●
Feature recognition	●		●
Data Vaulting and revision control	●		●
Import scanned data	●		●

SIMULATION PRODUCT FEATURES	Student ENGINEERING Kit	Student DESIGN Kit	Network License Borrowing
Analysis			
Assembly Simulation	●		●
Mechanism Analysis	●		●
Event-Based Motion	●		●
Compare and Optimize Design	●		●
Simulate Natural Frequencies	●		●
Predict Buckling or Collapse	●		●
Simulate Heating or Cooling	●		●
Simulate Drop Test	●		●
Simulate Fatigue	●		●
Simulate Plastic and Rubber Components	●		●
Simulate Composites	●		●
Simulate Forced Vibrations	●		●
Nonlinear Dynamics	●		●
Fluid Flow Simulation	●	Xpress Only	●

SUSTAINABILITY PRODUCT FEATURES	Student ENGINEERING Kit	Student DESIGN Kit	Network License Borrowing
Environmental Impact Dashboard with Key Indicators	●	●	●
Seamlessly integrated with SolidWorks interface	●	●	●
Environmental Impact Estimates of Parts	●	●	●
Material Selection Tool	●	●	●
Customizable Reports	●	●	●
Establish Baseline to Compare Design Decisions	●	●	●
Baseline Comparison Report	●	●	●
Environmental Impact Estimates of Assemblies	●	●	●
SolidWorks Configuration Support	●		●
Input "Use Phase" Energy	●		●
Specify Primary Transportation Type	●		●
Report Includes BOM with Best/Worst Components	●		●
Assembly Visualization Support	●		●

DATA MANAGEMENT
PRODUCT FEATURES

Student
ENGINEERING
Kit

Student
DESIGN
Kit

Network
License
Borrowing

Secure Access



Revision Control



Find Files



Scalability

Custom Configuration

Find and Reuse Design Data

Full Document Preview

Distributed Design Teams

Remote Access

Automated Approval Process

Audit Trail

Share with outside partners

Collaborative comments

Dassault Systèmes
SolidWorks Corp.
175 Wyman Street
Waltham, MA 02451 USA
Phone: 1 800 693 9000
Outside the US: +1 781 810 5011
Email: solidworks.education@3ds.com
www.solidworks.com/education

