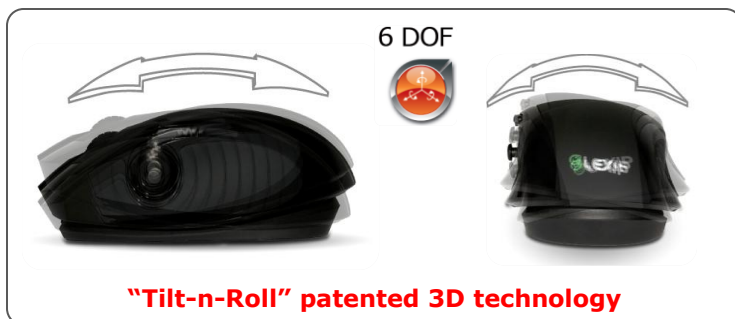


3DM-Pro : the ultimate professional 3D mouse



Accelerate your entire design, development, creation processes thanks to the world first 3D mouse

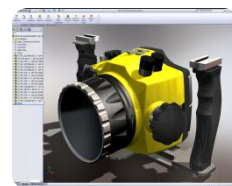
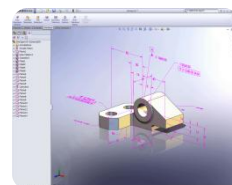
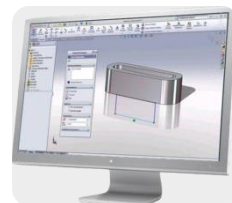
With only one hand, select, create, edit, move, pan, zoom and rotate your 3D model or environment.

Combining innovation, comfort and performance, the 3DM-Pro mouse is the ultimate tool for professionals. From drawing, to sketch, to part, to assembly, no need to constantly shift between navigation and editing. You will work faster, smarter with greater comfort.

Once plugged, no way back !



- "Tilt-n-Roll" motion controller and analog stick for 6DOF unparalleled level of control
- Plugin for Solidworks®, Catia®, 3ds Max® and many more 3D applications
- 3200 dpi laser for precise drawing and editing
- 7 programmable buttons for optimal personalization of your 3D application
- Smart interface : automatic detection of the 2D/3D application used and profile adjustment
- Non-slip rubber clicking scroll-wheel
- Ergonomic shape for comfortable working experience
- Soft touch and non-slip rubber sides for greater comfort
- USB mouse
- Designed for : Windows XP, Vista or Seven (32 or 64 bits)



and many more 3D applications.
List on www.lexip.fr/pro/en

More information on www.lexip.fr/pro/en