



**3DPartFinder**  
For SOLIDWORKS

# 3DPartFinder V3 for SOLIDWORKS®

*Search with a Shape!*

## 3DPARTFINDER WILL REVOLUTIONIZE YOUR WAY OF WORKING!

Stop searching in vain for similar parts using traditional search engine based on their name, description or part number. 3DPartFinder search successfully for similar parts using their SHAPES as input! Launch 3DPartFinder when you begin a design project and make sure no duplicates exist. You can save time and design using the closest existing design found by 3DPartFinder.

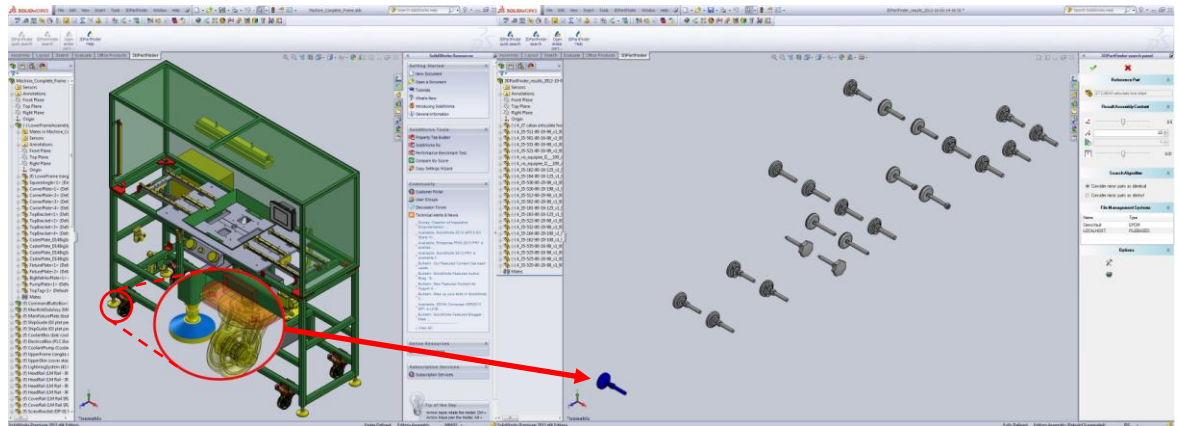
## EARN MORE MONEY!

Every time you re-use data found by 3DPartFinder you take advantage of your field proven design and free-up yourself to work on more projects, resulting in increased revenues!

## INCREASE MARGINS!

Answer requests for quote while reaching all the similar parts, compare the prices invoiced and manufacturing processes to prepare precise quote with adequate margins!

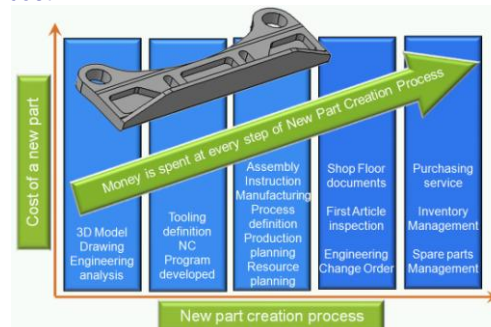
*From geometric  
data to  
business  
intelligence*



3DPartFinder is a shape search product that does for parts what Google® does with text: It finds and displays parts similar to the initial inquiry. That initial inquiry can come in various ways. One approach is to load an existing file of the target part and launch 3DPartFinder. Another approach is to sketch an image of the target part in SOLIDWORKS®, and then have the search engine find similar parts. Search results are ranked by order of similarities and display in a SOLIDWORKS® assembly.

## *Creating a new part cost more than you think!*

Nowadays, using almost any CAD system, an experienced designer can create a new part very quickly. Most of the time it is much faster for an experienced designer to create a new part then searches the company database for similar or identical parts. What to blame? After all, your design team has to meet tight schedules and the company has critical time-to-market windows to introduce its new products. But designing a new part is only the beginning of the entire part's creation process. As you go through the various steps that will finally take the part to inventory, you add value to it and therefore increase the part's cost.



*The creation of a new part costs a couple thousands to a few tens of thousands of dollars.*

## *Part re-use accessible to all!*

Whether you are an engineer, designer or executive manager, you probably realize that companies adopting an automated part re-use strategy have the potential for huge cost savings. Here are some of the main benefits of a part re-use strategy:

1. Eliminate the creation of duplicates
2. Reduced tooling, prototype and testing costs
3. Knowledge re-use in core engineering
4. Increase engineering productivity
5. Reduce inventory costs

**The key to a successful part re-use strategy is to have the ability to search on the basis of shape to find identical or similar items.**

Start working with 3DPartFinder and begin to save money by leveraging your biggest asset: Your CAD designs cumulated over the years!

**SOLIDWORKS**

**Solution Partner**



# 3DPartFinder V3 for SOLIDWORKS®



## 3 good reasons to buy 3DPartFinder now:

1. Establish part re-use in a simple and convivial way to save
2. Deliver your projects faster with your best engineering practices integrated
3. Earn more money by increasing your margins and delivering more projects

## 3DPARTFINDER IS TOTALLY INTEGRATED TO SOLIDWORKS®!

We have fully integrated 3DPartFinder to SOLIDWORKS® to give you access to all the functions of your CAD system.

Launch 3DPartFinder from SOLIDWORKS® and the results are presented in an Assembly of your CAD system.

Parts are ranked according to their similarity to a reference and you can rotate them compare them within SOLIDWORKS®.

## ROBUST BECAUSE IT IS MULTI-REFERENTIAL

3DPartFinder will find all the similar parts even if they were created in different referential.

## 3DPARTFINDER:

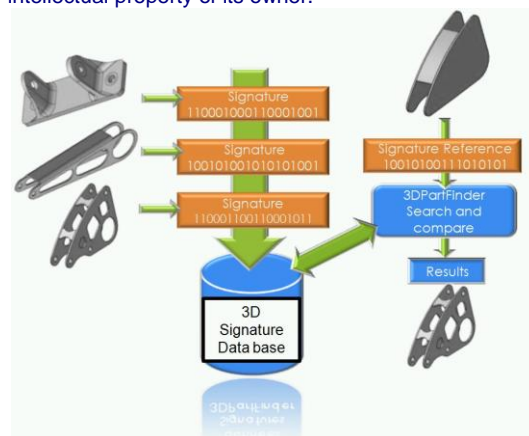
1. Reduce delay associated to part search as well as engineering information.
2. Profitable for all services: concept, design, production, procurement, after sales, etc.
3. Independent from any keywords or language in which the part was created.

**From geometric data to business intelligence**

## 3DPartFinder technology

3DPartFinder uses geometric CAD data for its search rather than alphanumeric characters. It can search a database of millions of parts and identify duplicate and/or similar geometry in seconds without the need for manual part pre-classification.

One of the fundamentals of the semantics created is the "signature" of a 3D model. The signature of a 3D CAD model is a small file (max.15K) created as a result of its shape analysis. This signature is not a compressed version of the CAD model. It is a mathematical representation of the 3D shape that is irreversible, encrypted and therefore protect the intellectual property of its owner.



3DPartFinder Signature creation and search process

The signature is « native » and extracted directly using the API of SOLIDWORKS®. The signature does not suffer any deterioration that could be introduced by any intermediate formats such as VRML, STL or JT and allow for greater accuracy of the research. Once the software installation is completed, the 3DPartFinder indexing operation creates automatically the search database of those fingerprints.

## Technical Specifications

- 3DPartFinder search is entirely automated
- Research time generally below 1 second
- Automatic Part Indexation process (signature extraction)
- Windows 32bits or 64bits, Vista and Windows7
- Integrated in SOLIDWORKS® version 2011 to 2013
- Supports Enterprise and Workgroup PDM, and other PDM

## Available to all!

3DPartFinder V3	Enterprise	Small Business
Type of utilization	Multi-Users, Network, PLM/PDM	Unique User
Multiple CAD Stations in Network environment	✓	
Desktop Single CAD Station	✓	✓
Geometric search		
CAD Native file formats	✓	✓
Other CAD file formats*	✓	
Duplicate parts	✓	✓
Identical mirror parts	✓	
Recursive parts search in results assembly	✓	✓
Launch parts search within an assembly	✓	
PLM-PDM Vault access	✓	
* Depending on your CAD capabilities. 3DPartFinder Geometric search engine need format with a solid body to perform.		
3D Signatures Management		
3DSignatureManager Server License	Not Included	Included
3DSignatureManager	Microsoft Folders and/or PDM/PLM	Microsoft Folders
3D Signatures Data Base	Shared	Local
Included MSSQL Data Base*	Server Express*	Server Compact*
Number of Parts (Signatures)	Unlimited	3000
* MSSQL Server Express and MSSQL Server Compact (SQL CE) are registered trademarks of Microsoft Inc.		

## Speaking the « shape language »

Traditional search engines rely on comparison and search capabilities based on part numbers and descriptions alone. While this method can be very useful, its limitations do not allow companies to fully optimize their parts management due to issues such as inconsistent standards and classifications, limited part number conventions and native language dependence.

3DSemantix has created the semantics to "speak" the 3D shape language required to find, without a doubt, if you have similar parts in your directory. 3DPartFinder is a shape-based search engine that uses this new semantics to help you find all similar or identical parts in less than a second.

**Whatever your motivations are, when you adopt 3DPartFinder, you won't begin a new project without launching a search!**



3DSemantix

33 Prince Street, Suite 107,  
Montreal, QC,  
H3C 2M7, Canada

[www.3dpartfinder.com](http://www.3dpartfinder.com)

SOLIDWORKS® is a registered trademark of Dassault Systèmes SolidWorks Corporation.  
Google® is a registered trademark of Google Inc.