



power2

Turbocharger for SolidWorks

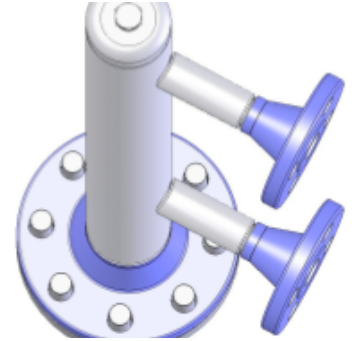
innovation

his new
of

Contact: Ken Zebracki

Contact Info: Cell 440-336-7027

email: power2@mac.com



power2 for SolidWorks

You want to enter a set of input parameters and produce a design FAST! You want a parametric assembly.

Traditional attempts at parametric assemblies use a “master model” technique, including every possible variation and suppressing parts that don’t apply.

This may work, or it may fail under the weight of its own complexity because of the sheer number of options involving component existence, type and quantity.

To overcome this limitation, you need to generate:

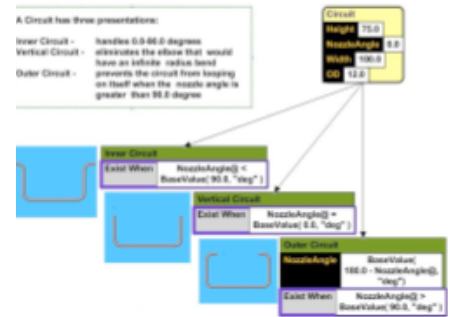
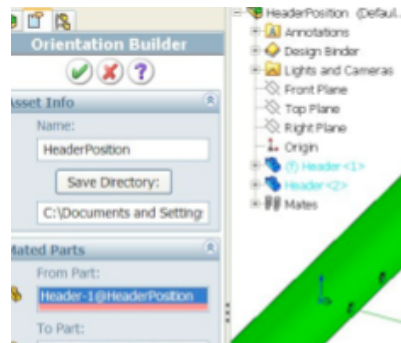
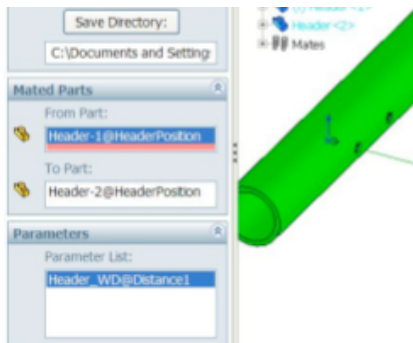
- ✓ only the component you use
- ✓ the correct component for the job
- ✓ the exact component count you need

Generating true parametric assemblies is the job of power2 for SolidWorks. **Relax and let power2 do the work for you!**

POWER2 3860 Ben Hur, Willoughby, OH 44094

Why power2?

- leverage existing SolidWorks models
- capture engineering rules
- generate true parametric assemblies
- design “by example”
- dedicate more time to true engineering
- master model techniques don’t work
- diagrammatic approach is intuitive
- fast quotes
- quick models
- accurate products
- accelerate time-to-market
- increase profitability



Don't suppress, generate

power2 is generative. That is a huge benefit! In any particular design you insert only those parts and mates required. There is no need to manage and carry the baggage of components not used!

Don't repair, get it right the first time

Using existing rules, power2 selects the correct alternate topology that will rebuild the first time.

Don't draw, engineer

All CAD systems are geometry systems. They are not designed to express or hold engineering rules. power2 gives you the means to take the step from dimensioning to engineering. It drives dimensions from capacities demanded of a specification through engineering rules expressed in units such as torque or pressure, not just angle length and quantity. This is powerful!

Don't code, document

power2 provides a language for expressing and documenting engineering and configuration rules. As a design engineer, you can define your solutions schematically, by relating parts and assemblies in a straightforward knowledge diagram! You can then add both geometric and non-geometric attributes to control your design, written with spreadsheet-like formulas. power 2 requires **no programming experience!**

Your assemblies will be truly parametric with power2. Built in tools help you easily describe the range of variations in designs that you see in your engineered-to-order products and to generate new designs almost instantly.

power2 makes it easy to import your existing SolidWorks parts and mating conditions "by example" using power2's innovative "**asset builders**", precluding the need for complex programming and orientation mathematics.

power2 assists manufacturing companies that design for every sale. Companies whose products are engineered-to-order will realize substantial benefits in automating their proposal and design processes including:

- ✓ reduced design time
- ✓ improved accuracy
- ✓ rapid quote generation
- ✓ insured product quality

Companies that don't do repeat designs will still benefit by documenting and validating their design knowledge. Add your non-geometric engineering knowledge to meet your business needs.... FAST!!! TURBOCHARGED!



POWER2 provides engineers with design productivity tools that help them create and produce better designs faster. Created for companies that design and manufacture engineered-to-order (ETO) products, our tools are packaged as incredibly affordable add-ins to SolidWorks that provide payback in days - not weeks, months or years! These easy-to-use productivity tools turbocharge engineering department productivity when applied to every design engineer's workstation!