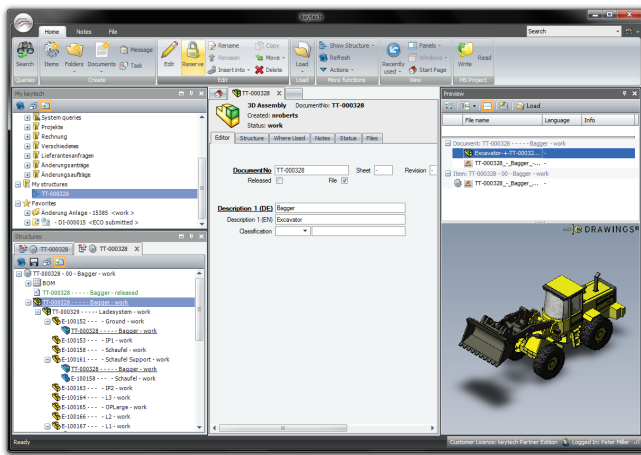


Lifecycle & Workflow

keytech PLM provides a comprehensive solution for the management of all data and documents generated or modified during the product lifecycle.

keytechs' modular, scalable structure, enables the progressive implementation of full PLM from document management up to a full product lifecycle management, true to the motto Think Big -Start Small.



keytech PLM enables the control of internal process workflows, encompassing the integration of approved operating processes. Product lifecycles can be exactly defined, by the definition of the particular cycle state. By this, the appropriate product know how is available for the authorized user everywhere at all times.

Product development periods will be reduced and the product quality will be increased simultaneously.

Concurrent Engineering

The increase in productivity is gained through a close and transparent collaboration of all users. Product information is provided efficiently for the relevant user group. keytech PLM monitors all changes of engineering data and provides an automated comparison within the team.

This significantly reduces potential error rates and avoids unnecessary processes.

The support of company specific workflows in conjunction with user specified revision management, significantly reduce the 'time to market' launch of products.

With keytech PLM you can manage and control all processes and documents, from the first product conception, through the construction of different variants, assist in the appropriate reutilisation of historical data and control the development and release of complete projects within your company.

Multi-CAD

keytech PLM provides interfaces for all leading CAD-systems enabling an inclusive item and document management solution.

A full bidirectional data interchange between keytech and the CAD-system is provided. 2D-drawings as well as referenced 3D-model structures will be completely managed by keytech.

keytech PLM can aid in the transition from 2D to 3D with the help of its CAD-system-spanning management of the history of all documents.

Bill of materials are automatically derived from a CAD-model, can incorporate multiple CAD-elements and none CAD-elements.

Microsoft Office Integrations

Microsoft Office Outlook, Microsoft Office Word, Microsoft Office Excel, Microsoft Office PowerPoint, Microsoft Office Project, Microsoft Office Visio

Integrated CAD Systems

SolidWorks, CATIA, SpaceClaim, Solid Edge, Inventor Unigraphics / NX, Pro/ENGINEER, ME10 / Designer Drafting, AutoCAD, EPLAN, Mentor Graphics, E³.series

Supported Databases

Microsoft SQL-Server
Oracle

Documentation & Archiving

keytech PLM automatically creates and manages neutral graphic formats (e.g. TIFF, PDF). These formats are available for information, archiving and documentation proof within the DIN-ISO 9000.

Documents which are relevant for production or for a project, can be managed within appropriate structures within keytech PLM by using user generated predefined rules and transferred to your output management solution.

ERP Integration

The linking of PLM and ERP leads to a holistic management of product data. The provision of comprehensive mapping of process chains offers continuous transparency, faster series-production readiness and long-term product planning can significantly reduce costs.

keytech PLM supports bidirectional integration with all leading ERP-systems. keytech PLM offers a direct access to item relevant documents from your ERP-system.

Items and bill of materials will be automatically transferred through a thorough validity check into the chosen ERP system. Changes which are made in the ERP item master, can propagated directly into keytech PLM.

Supported ERP systems:

- SAP
- Microsoft Dynamics AX
- Microsoft Dynamics NAV
- SIVAS
- Oracle
- Infor ERP
- Baan / Infor ERP LN
- abas
- PSIpenta
- P2
- Sage bürer
- syteline

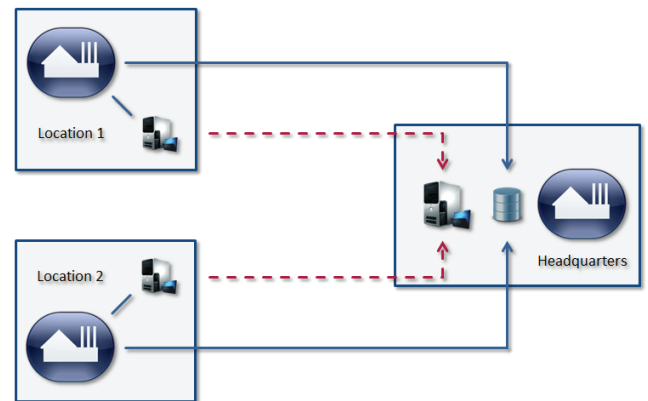
Working in global company structures

Multilingual interfaces are provided to facilitate the global use of a PLM-system. Included in the multi-lingual facilities is the ability to convert not only the title blocks but also free texts and drawing frames directly and automatically from the PLM-system enabling the drawing to be displayed in the appropriate language determined by the users location and language selection.

In addition to this keytech PLM offers a common management across multiple sites with controlled access to all information and structures as well as a truly trend setting solution.

DFS (Distributed File Server)

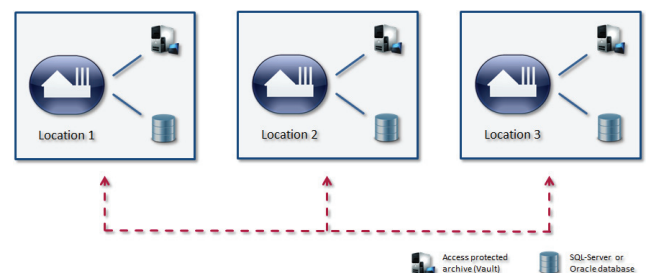
keytech PLM offers the possibility of a corporate central data management with individual fileserver for different international sites. The document data (3D models, 2D drawings, PDF, TIFF, Word, Excel etc.) is locally allocated and updated for every site, ensuring the highest possible performance available at each particular site. Solely the edited documents are updated multisite. This facilitates constructive working in global engineering teams.



Access protected
archive (Vault)
SQL-Server or
Oracle database

FED (Federation Server)

In addition to the DFS solution, to corporately work multisite on a single, centralised database, keytech PLM can handle the synchronisation of multiple, parallel working databases at different sites. Data and documents are modified on demand. This leads to an increase of the availability and reliability. This methodology removes the need for a permanent connection between the sites.



Access protected
archive (Vault)
SQL-Server or
Oracle database