

EnSuite - A Solution for Sharing Detailed Product Knowledge with Ease

Product development and manufacturing is a collaborative effort between an enterprise's internal and external teams. Design, Engineering, Manufacturing, Packaging, Purchasing, Marketing and the extended supply chain which frequently is globally dispersed, need to work together to bring products to market. Global competition has forced compressed development schedules and severe cost pressures. In this environment it is critical that all stakeholders have timely and accurate product information at their fingertips.

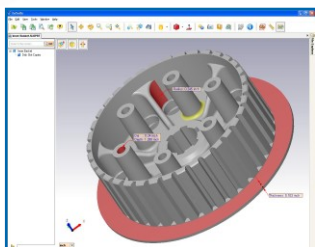
Most companies now use CAD data as their product master to document all aspects of its design and manufacturing. However, CAD systems are still expensive, hard to use and not suitable for anyone except trained designers. This is further complicated when CAD data may be authored in different CAD systems based on best-in-class application usage.

EnSuite is designed to provide quick access to critical engineering information residing in CAD data, no matter which CAD system was used to author it. Its extremely user-friendly interface is designed with non-designers in mind.

EnSuite Features

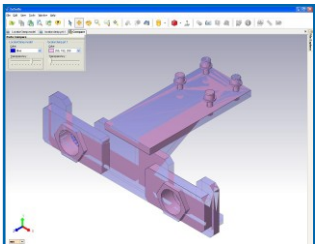
Measure (Geometry & Features)

EnSuite can be used to measure geometric entities and feature data. It also makes working with assemblies easy by providing access to interference data in assemblies.



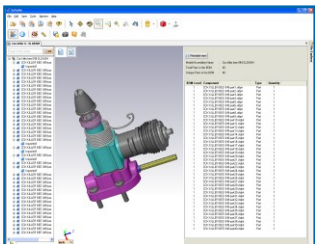
Compare Parts & Assemblies

EnSuite provides tools for visual verification and comparison of part and assembly files by overlapping the part geometry, comparing geometry with points on second model, comparing the difference in the assembly structure and transformation. This is especially useful for Quality Control purposes and can be used as the first level inspection.



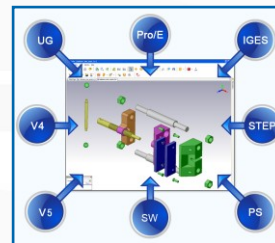
Product Information

EnSuite provides product information like Bill Of Materials and Parent child info in assemblies. This information can help purchasing identify all of the parts in an assembly in preparation for make or buy decisions.



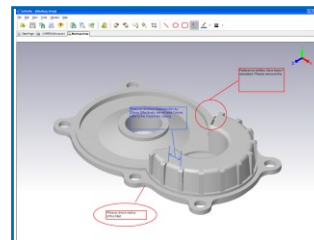
Multi-CAD Assembly

EnSuite provides the ability to create an assembly by bringing in parts/assemblies from multiple CAD formats. This is especially useful in a heterogeneous supply chain environment, where suppliers and OEM's work with multi-CAD data towards the same product design.



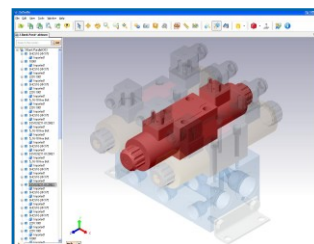
Collaboration

EnSuite allows markup and redlining functionality for easy collaboration of design data. This enables users in the extended product development team, who do not have access to the originating CAD system, to participate in the design review process. In many cases, an inefficient paper-based review process can be converted to a much more efficient electronic process.



Visualization

EnSuite has viewers for all commonly used CAD and image file formats. Even better, you do not need CAD software or licenses to view any of the supported file types. Viewers are currently available for CATIA V4/V5, Pro/ENGINEER, SolidWorks, NX, Parasolid, JT, STEP and IGES files.



Conversion

EnSuite provides seamless CAD data interoperability between all major CAD systems in use today viz. CATIA, NX, Pro/ENGINEER, SolidWorks, Parasolid, Solid Edge, JT, IGES and STEP. Files can be translated from and to most of the commonly used files formats without the CAD software or license shaving the cost of MCAD software ownership from the interoperability process. A number of kernel based and neutral file translators are also available.

Software Auto Updates

EnSuite installation is extremely simple, and the product is built with an auto update feature, that downloads and installs updates without any user intervention.

Visit www.cadcam-e.com/products/EnSuite2/ for demo movies