

Cad Mentoring Program™ for SolidWorks®

Are you looking to gain true competency using SolidWorks®? Normally the only way has been costly on-the-job experience in a busy, milestone-driven engineering environment.

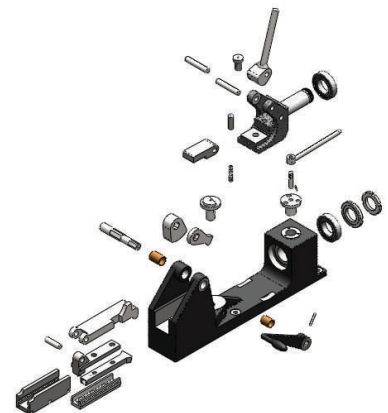
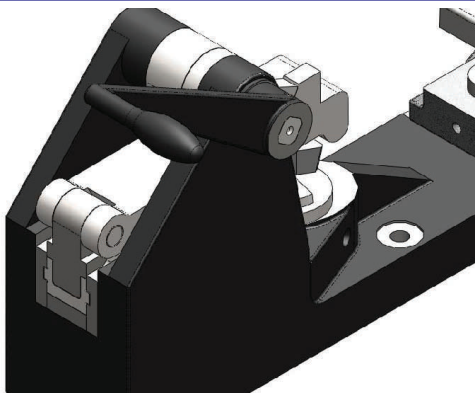
The resulting industry situation - employers are seeking only experienced users; designers with only a SolidWorks® course have frustrating job-searching results.

The Cad Mentoring Program™ for SolidWorks® is the answer. You or your employees will learn to employ SolidWorks® with real efficiency from an industry-experienced, Certified SolidWorks® Professional-qualified mentor during or after working hours. You will possess undeniable proof of working out challenging, in-depth SolidWorks® models and drawings; your ability to be productive will be obvious to anyone who views your large portfolio. Of those in this program since the beginning, to date there is a remarkable record;

"not a single person has actually completed Mentoring before being hired in industry"



Marius came to Canada with high hopes, but two years of working outside of his industry making beds and as an assembler left him doubting his dreams. He had some SolidWorks® training, but with little Canadian experience, he was not able to find work as an engineer. He took the Cad Mentoring Program™ for SolidWorks® and had this to say - *"I can hardly describe how good the mentoring program was, except to say that at my new job I quickly became a sort of mentor myself, teaching my colleagues SolidWorks® secrets and tips. I was hired to convert the machines the company produces into SolidWorks®, but after 3 months they decided to hire someone less skilled to do the job and then moved me into the Research & Development department."*



Ubique Mechanical Design, Inc

Primary Business Address
3840 Edgemont Blvd
North Vancouver, BC
V7R 2P7

Phone/Fax: 604-986-9696
E-mail: info@UbiqueInc.com
Website: www.UbiqueInc.com

If you have questions about the Mentoring programs and to confirm that you have the prerequisites,

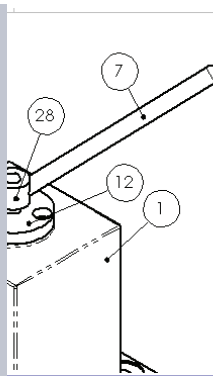
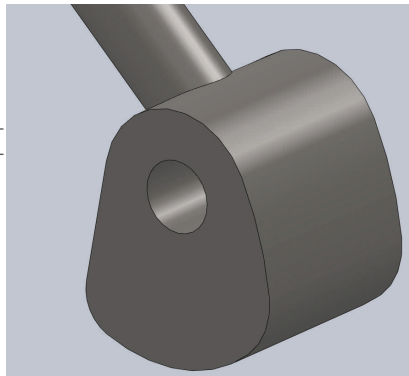
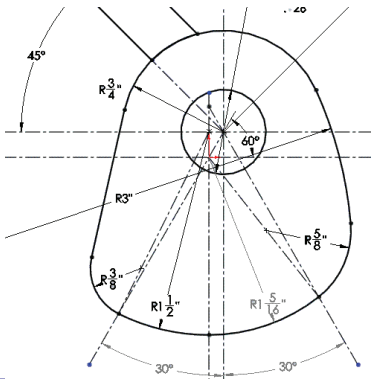
Contact us—we will be glad to talk to you.

PREREQUISITES TO JOIN THE PROGRAM

- SolidWorks® 1, or
- Equivalent 3D cad experience or courses, and
- The ability to pass a SolidWorks® skills entrance test

Do you feel your engineering career will benefit from the Cad Mentoring Program™ for SolidWorks® ?
Take the following steps

1. Submit your request to the website, <http://www.ubiqueinc.com/contact>,
2. Telephone 604-986-9696 to arrange an interview to ensure this program is a fit for your career objectives,
3. Set a time for the 2-hour qualification test. For your protection, it ensures good use of your mentoring hours
 - This can be done remotely on your own SolidWorks®, or using our license via remote control
4. Upon qualifying, your program will begin when you receive the following:
 - The Cad Mentoring Program for SolidWorks® exercise booklet with all instructions,
 - 10 individual mentoring hours, conducted by live webinar or in-office by appointment
 - A color SolidWorks® reference chart,
 - A network folder, backed up each day, from which your mentor can assess your work
 - A free exam for the official Certified SolidWorks® Associate (CSWA) designation
5. Our Guarantee – we are so certain that this program will make you capable of employing SolidWorks®, that we guarantee you will obtain your CSWA designation after finishing the Cad Mentoring Program™ for SolidWorks® or we will pay for the re-test.



ITEM NO.	DESCRIPTION
1	BODY
2	CAM
3	CAP
4	SHCS 1/4 x 1" LG
5	PLUNGER
6	SPRING
7	HANDLE, ADJUSTING
8	CRADLE
9	PLATEN
10	SET SCREW, 1/4" X 3/8"
11	HANDLE
12	STOPPER
13	AXIS PIN
14	CARRIAGE
15	SPRING, 3/8"

Program content and skills gained

Parts - sketching, extrudes, sketch relations, cuts, shell, area-select method, revolves, surfaces, lofting, Hole Wizard, multi-bodies, Weldments, Excel-driven configurations, sweeps, equations, material properties, troubleshooting, custom properties, part templates, linked dimensions, part numbering, mass properties, textures, parametric design, part layout, SimulationXpress, reference geometry, fillets & chamfers.

Assemblies - mates, insert part, save as assembly, exploded view, explode lines, advanced mates, troubleshooting, file manipulation.

Drawings - custom properties, sheet formats, industry-naming conventions, sheet templates, bills of material, drawing standards, imperial measurements, section views, detail views, dimensioning, tolerancing, weldment bills of material, revision table, isometric section view, change template, title blocks.

Frequently asked questions

- What if I don't pass the qualification exam?

Answer - your skills will be assessed and you will be quoted on specific pre-mentoring so you'll pass on your next try.

- Will I find a job in industry after taking this program?

Answer - there's no guarantee of course, but a large part of the mechanical engineering industry uses 3D CAD and being competent using the popular SolidWorks® is a great and even, we argue, necessary addition to your portfolio.

- I don't have my own copy of SolidWorks®, how can I complete this program?

Answer - SolidWorks® presently is offering 3-month trials of educational versions - otherwise a Ubique license can be rented by the month

- Can I meet my mentor personally to ask more questions about this program?

Answer - yes, see the contact details on the bottom of the first page to arrange a meeting