



## Features summary:

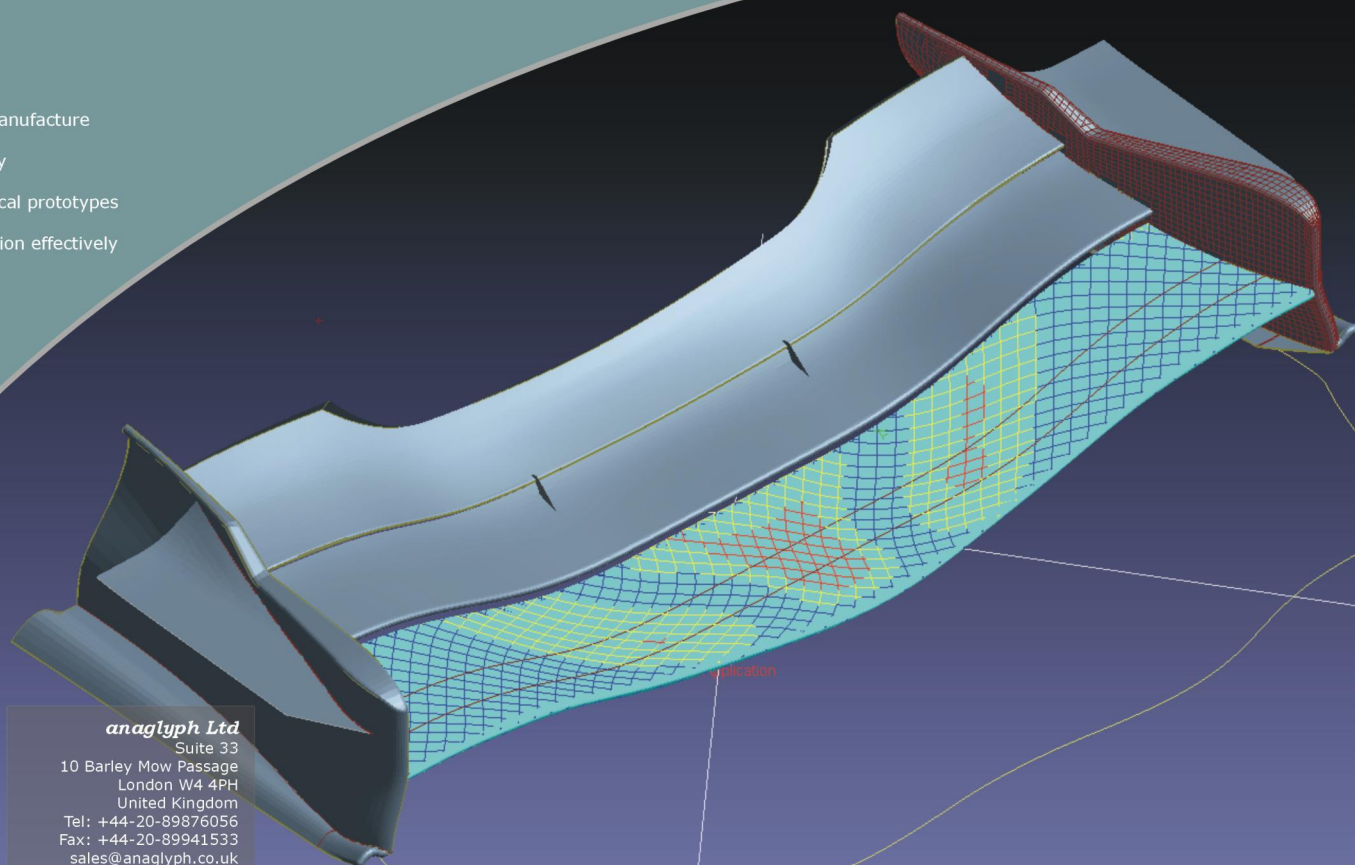
- ✓ Proven draping technology
- ✓ Interfaces to industry standards (SolidWorks, Nastran, Ansys, MSC.Patran, Femap, Abaqus, HyperWorks, FiberSIM, Laser projection)
- ✓ CAD geometry import
- ✓ Quick and accurate specification of laminate designs reflecting the ply based physical composition of the structure
- ✓ Communication of structural details widely improved, as compared to traditional methods
- ✓ Analysis model generation
- ✓ Unique FEA post-processing
- ✓ Generation of accurate manufacturing data (such as ply flat patterns)
- ✓ Time-saving methodology, allowing for design verification and optimisation

## Benefits:

- ✓ Integrate design, analysis and manufacture
- ✓ Highlight potential problems early
- ✓ Reduce need for expensive physical prototypes
- ✓ Communicate laminate specification effectively
- ✓ Minimise material waste

# Laminate Tools

A powerful, proven Windows application to aid engineers in the design, analysis and manufacture of laminated composite structures.

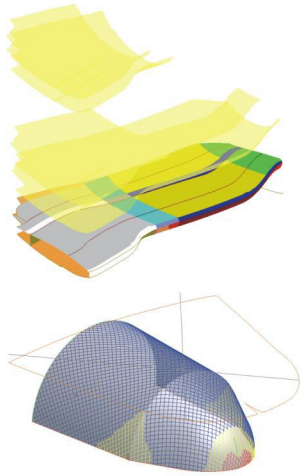


### anaglyph Ltd

Suite 33  
10 Barley Mow Passage  
London W4 4PH  
United Kingdom  
Tel: +44-20-89876056  
Fax: +44-20-89941533  
sales@anaglyph.co.uk  
www.anaglyph.co.uk

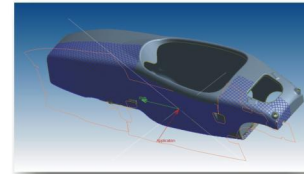
Copyright © 2011 Anaglyph Ltd

# Laminate Tools



## Design

**DESIGN** the composites aspects for your structure. Build the entire Layup by simulating the draping of fabric material over complex surfaces. Review and make rapid changes before finalising the plybook.



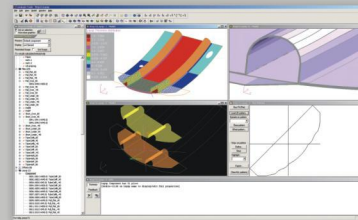
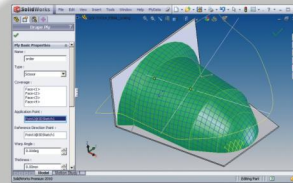
## Geometry

Import CAD geometry, for easy surface and curve selections.

## View

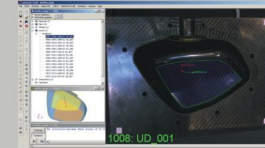
**VIEW**, interpret, verify, share, communicate and safeguard all the composite materials information.

Use industry-standard methods and proven technology to minimise design time.



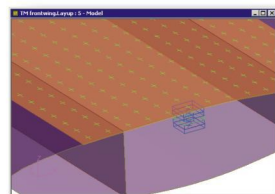
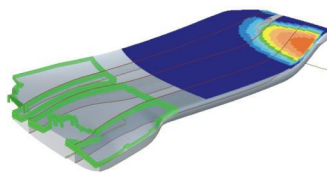
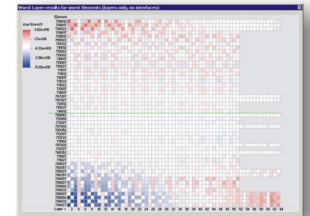
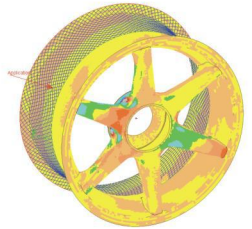
## PlyMatch™

Interface with a unique ply placement solution for easy manufacture.



## Check

**CHECK** FEA results and use Laminate Tools to generate new Failure Indices, Margins of Safety and Reserve Factors, or even layer stresses. Examine results by loadcase, by layer, by global ply, layer by layer for each element, group worst elements, etc.

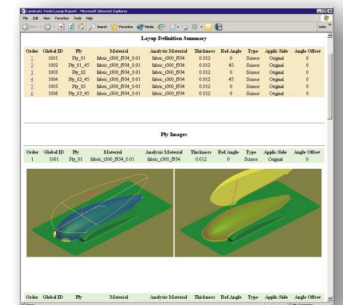
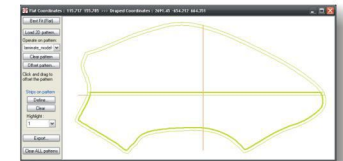


## Analysis

**ANALYSE** the composite Layup by converting the global ply draping results to accurate local element material properties (laminates) for use in FEA.

## Manufacture

**MANUFACTURE** exactly what has been designed with minimal effort. Use the Laminate Tools flat pattern results to nest, cut and place material with PlyMatch or laser projection. Generate electronic plybooks for best results.



*Drape it - Check it - Make it*

[www.anaglyph.co.uk](http://www.anaglyph.co.uk)