



# THE SOLIDWORKS SOLUTION PARTNER PROGRAM



SOLIDWORKS CERTIFIED GOLD PRODUCTS 2025



# INTEGRATED. ASSOCIATIVE. CERTIFIED.

Get the power you need to finish the job right with SOLIDWORKS® Certified Partner Products. From Knowledge-Based Engineering (KBE) and mold design software solutions to Computer-Aided Manufacturing (CAM) tools, you'll have everything you need to get your products to market faster.

## Integrated

Data export just got easier. A lot easier. With single-window integration, all the tools you need work together using the same design data. This means you can work directly in the native SOLIDWORKS environment, instead of exporting models to a standalone product. And with our Certified Partner Products, you can take advantage of unique SOLIDWORKS capabilities like Configurations, PropertyManager, and the FeatureManager® design tree.

## Associative

Like SOLIDWORKS software, Certified Partner Products are fully associative. When you make design changes, they update data automatically or warn you that additional changes are necessary. So you can be sure that your data is always in sync. Always.

## Certified

Our certification team rigorously evaluates all of our Certified Partner Products, making sure they comply with SOLIDWORKS standards. You can rest assured that they will have the SOLIDWORKS look and feel and work with each new SOLIDWORKS release.

We are always evaluating new solutions for our Certified Partner Products.

Visit [www.solidworks.com/engineering-software-partners-products](http://www.solidworks.com/engineering-software-partners-products) for an up-to-date listing.

# CONTENTS

## PARTNERS WITH CERTIFIED GOLD PRODUCTS IN ALPHABETICAL ORDER

3D QuickTools Ltd.	10,14	Mark Design Solutions Pvt. Ltd.	9
Albitech Ltd.	13	MecSoft Corporation	4
ATR Soft Oy	7	nPower Software	8
BobCAD-CAM, Inc.	3	OPEN MIND Technologies AG	4
Breault Research Organization	11	Oqton	14
C&G SYSTEMS, Inc.	3,10	QBuild Corporation	8,11
CAD/CAM Components	7	R&B Mold & Die Design	11
CadParts, Inc.	5	ReverseEngineering.com	14
CadWorks Software Oy Ltd.	7	Reware, Inc.	14
Camtek GmbH	3	Sigmetrix LLC	16
CAPVIDIA	6	Silver Star West LLC	4
CIDEON Software & Services GmbH & Co. KG	13	Smap3D Plant Design	12
Creative Design Concepts, Inc.	13	SolidCAM, Inc.	5
Datakit	6	SolidPartners, Inc.	5
DPS Software GmbH	15	SolidPlant B.V.	12
DriveWorks Ltd.	9	SPI GmbH	15
EFICAD	3,7	Tacton	9
HCLSoftware	4	TransMagic, Inc.	6
HCV Data Management GmbH	13	Tri-D Technologies, Inc.	8
Innovative Tube Equipment Corporation	12	Varatech, Inc.	16
Klietsch GmbH	16	Visiativ	8,12
LogoPress	5,10,15		
Manusoft Technologies Pte Ltd.	10		

## PARTNERS WITH CERTIFIED GOLD PRODUCTS BY CATEGORY

### CAM

BobCAD-CAM, Inc.	3
C&G SYSTEMS, Inc.	3
Camtek GmbH	3
EFICAD	3
HCLSoftware	4
MecSoft Corporation	4
OPEN MIND Technologies AG	4
Silver Star West LLC	4
SolidCAM, Inc.	5

### Component/Content

CadParts, Inc.	5
LogoPress	5
SolidPartners, Inc.	5

### Data Interoperability

CAPVIDIA	6
Datakit	6
TransMagic, Inc.	6

### Design/Drafting

ATR Soft Oy	7
CAD/CAM Components	7
CadWorks Software Oy Ltd.	7
EFICAD	7
nPower Software	8
Tri-D Technologies, Inc.	8
Visiativ	8

### ERP

QBuild Corporation	8
--------------------	---

### KBE/Design Automation

DriveWorks Ltd.	9
Mark Design Solutions Pvt. Ltd.	9
Tacton	9

### Mold and Die Design

3D QuickTools Ltd.	10
C&G SYSTEMS, Inc.	10

LogoPress	10
Manusoft Technologies Pte Ltd.	10
R&B Mold & Die Design	11

### Optical Design and Analysis

Breault Research Organization	11
-------------------------------	----

### PDM

QBuild Corporation	11
Visiativ	12

### Pipe and Tube Bending

Innovative Tube Equipment Corporation	12
---------------------------------------	----

### Plant Design

Smap3D Plant Design	12
SolidPlant B.V.	12

### PLM Integration

CIDEON Software & Services GmbH & Co. KG	13
HCV Data Management GmbH	13

### Reverse Engineering and Inspection

Albitech Ltd.	13
Creative Design Concepts, Inc.	13
Oqton	14
ReverseEngineering.com	14
Revware, Inc.	14

### Sheet Metal Fabrication

3D QuickTools Ltd.	14
DPS Software GmbH	15
LogoPress	15
SPI GmbH	15

### Steel Design

Klietsch GmbH	16
---------------	----

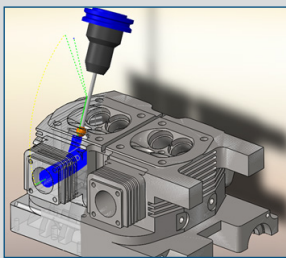
### Tolerance Analysis

Sigmetrix LLC	16
Varatech, Inc.	16

## CERTIFIED GOLD PRODUCTS – CAM



BobCAD for SOLIDWORKS is a Gold-certified CAM add-in developed to efficiently generate NC code for up to 5-axis milling, lathe, MillTurn and Wire EDM machine tools. User-friendly workflows and seamless integration with SOLIDWORKS enable users to transition from design to toolpath programming, simulation and generating shop floor setup sheets while working inside of both parts and assemblies.



BobCAD-CAM stands out from competition by offering some of the best functionality including feed rate control, high-speed roughing, and advanced surface toolpaths, all at a highly competitive price.

### **BobCAD-CAM, Inc.** **BobCAD for SOLIDWORKS**

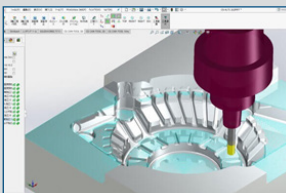
13528 Prestige Place  
Suite 102  
Tampa, FL 33635  
USA

NAM: +1 727 442 3554

[sales@bobcad.com](mailto:sales@bobcad.com)  
[www.bobcad.com](http://www.bobcad.com)



CG CAM-TOOL is the high-precision CAM System for Mold and Die Manufacturing. Its calculation engine is transferred from CAM-TOOL which is the most commonly used high-end CAD/CAM system in Japan.



### **C&G SYSTEMS, Inc.** **CG CAM-TOOL**

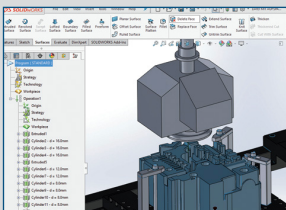
Tennoz Central Tower 19F  
2-2-24 Higashi-Shinagawa,  
Shinagawa-ku  
Tokyo, TOKYO 140-0002  
Japan

APAC: +81 3 6864 0784

[info\\_cg\\_camtool@cgsys.co.jp](mailto:info_cg_camtool@cgsys.co.jp)  
[www.cgsys.co.jp/en/index.html](http://www.cgsys.co.jp/en/index.html)



OPTICAM is a fully integrated solution for the programming of wire EDM machines inside SOLIDWORKS. Because of the automatic feature recognition and the assignment of integrated machining technologies and strategies, OPTICAM offers a high automation level and reduces programming time significantly.



### **Camtek GmbH** **OPTICAM**

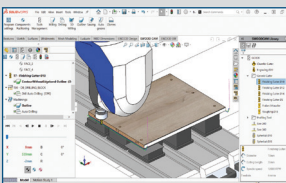
Werkstrasse 24  
Weinstadt-Endersbach  
BW 71384  
Germany

EMEA: +49 7151 97 92 02

[info@opticam.de](mailto:info@opticam.de)  
[www.opticam.com](http://www.opticam.com)



Woodworking CNC software to easily link design information to CNC router or CNC machines and generate necessary production documentation for machining processes.



### **EFICAD** **SWOOD CAM**

Espace H2O, 55,  
Avenue de Melgueil,  
La Grand Motte, 34280,  
France

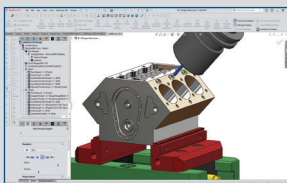
EMEA: +33 467 63 72 65

[eficad@eficad.com](mailto:eficad@eficad.com)  
[www.swood.eficad.com](http://www.swood.eficad.com)

## CERTIFIED GOLD PRODUCTS – CAM



CAMWorks, developed by HCL for the users of 3DEXPERIENCE SOLIDWORKS and SOLIDWORKS, provides advanced CAD/CAM technologies to program smarter and machine faster —such as feature-based programming, automatic feature recognition, and knowledge-based machining to capture and reuse your best practices.



### **HCLSoftware** **CAMWorks**

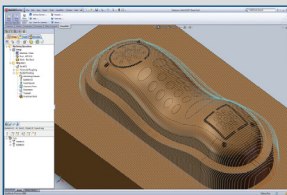
50 Kirts Boulevard, Suite A  
Troy, MI 48084  
USA

NAM: +1 480 367 0132  
EMEA: +49 172 787 4221  
APAC: +91 22 670 56715

[camworks.inquiries@hcl.com](mailto:camworks.inquiries@hcl.com)  
[www.camworks.com](http://www.camworks.com)



VisualMILL for SOLIDWORKS is one of the CNC machining industry's most affordable integrated CAM software for SOLIDWORKS, allowing the NC programming of SOLIDWORKS models utilizing 2-1/2, 3, 4, and 5 axis machining methods.



### **MecSoft Corporation** **VisualMILL for SOLIDWORKS**

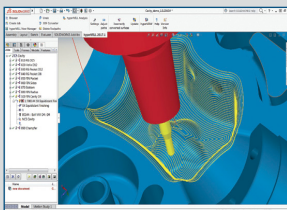
18019 Sky Park Circle  
Suite K-L  
Irvine, CA 92614  
USA

NAM: +1 949 654 8163

[sales@mecsoft.com](mailto:sales@mecsoft.com)  
[www.mecsoft.com/visualcamforsolidworks/](http://www.mecsoft.com/visualcamforsolidworks/)



hyperMILL is a high-performance CAM solution. All strategies for 2.5D, 3D and 5-axis milling, mill turning, and machining operations such as HSC and HPC are available under a single interface. Special applications and highly efficient automation solutions complete the range of functions.



### **OPEN MIND Technologies AG** **hyperMILL for SOLIDWORKS**

Argelsrieder Feld 5  
Wessling, Bavaria 82234  
Germany

EMEA: +49 8153 933 500

[info.europe@openmind-tech.com](mailto:info.europe@openmind-tech.com)  
[www.openmind-tech.com](http://www.openmind-tech.com)



SOLIDWORKS caught the eye of the store fixture manufacturing industry by filling a need for flexible top-down design in 3D while retaining the ability to use parametric design for repeat work. PathFinder3D was created to fill this gap and automate the SOLIDWORKS-to-CNC process.



### **Silver Star West LLC** **PathFinder3D**

409 Evergreen Drive,  
North Bonneville, WA 98639  
USA

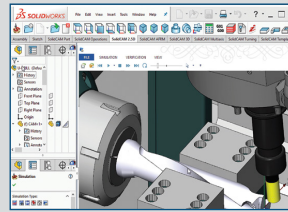
NAM: +1 888 892 3919

[sales@pathfinder3d.com](mailto:sales@pathfinder3d.com)  
[www.pathfinder3d.com](http://www.pathfinder3d.com)

## CERTIFIED GOLD PRODUCTS – CAM



SolidCAM supports all CNC applications: 2.5D Milling, HSS, 3D HSM/HSR, Indexial 4/5 axis, Simultaneous 5-Axis, Turning, Multi-Channel Mill-Turn, Swiss-Type and Solid Probe. SolidCAM provides the revolutionary iMachining that saves 70% and more in machining time and dramatically extends tool life.



### **SolidCAM, Inc.** **SolidCAM**

207 Pheasant Run  
Newtown, PA 18940  
USA

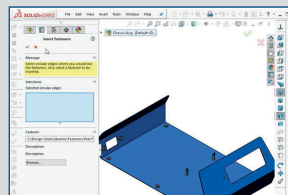
NAM: +1 866 975 1115

[info@solidcam.com](mailto:info@solidcam.com)  
[www.solidcam.com](http://www.solidcam.com)

## CERTIFIED GOLD PRODUCTS – COMPONENT/CONTENT



The CadParts Fastener Library contains over 11,000 fasteners. Nestled in all of its parts are engineering properties, as well as a description for BOM, hole size, torque, etc. All of the fasteners are modeled in SOLIDWORKS.



### **CadParts, Inc.** **CadParts Fastener Library**

1041 East 1420  
North American Fork, UT 84003  
USA

NAM: +1 801 376 5307

[sales@cadparts.com](mailto:sales@cadparts.com)  
[www.cadparts.com](http://www.cadparts.com)



123GO Light by LogoPress is the fastest and easiest way to insert fasteners and their related holes and mates automatically. It is a user-friendly and smart library that includes screws, nuts, washers, and pins. 123GO cuts holes and inserts fasteners over 10 times faster than any other method.



### **LogoPress** **123GO Light**

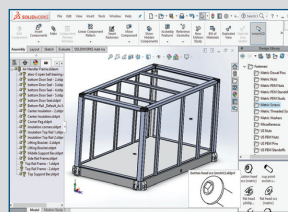
ZA Les Salines  
Pouilly Les Vignes, 25115  
France

EMEA: +33 3 81 60 23 60

[info@logopress.com](mailto:info@logopress.com)  
[www.logopress.com](http://www.logopress.com)



SolidParts is a simple yet robust solution designed, developed, packaged, and priced to help small and medium-sized companies gain a competitive advantage. The industry-standard library of fasteners for SOLIDWORKS.



### **SolidPartners, Inc.** **SolidParts™**

1851 McCarthy Blvd,  
Suite 202  
Milpitas, CA 95035  
USA

NAM: +1 800 605 3831

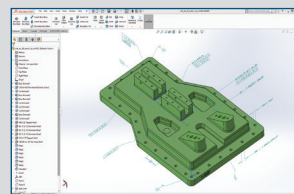
[sales@solidpartners.com](mailto:sales@solidpartners.com)  
[www.solidpartners.com](http://www.solidpartners.com)



## CERTIFIED GOLD PRODUCTS – DATA INTEROPERABILITY



With FormatWorks, you can import data, validate translations, verify model quality, and publish MBD data directly from within SOLIDWORKS.



Be sure to check out CAPVIDIA's other product: FaceWorks

### **CAPVIDIA** **FormatWorks**

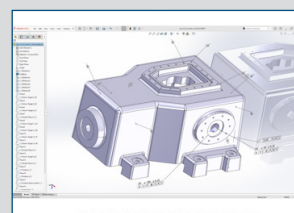
1700 Post Oak Blvd #600c  
Houston, TX 77056  
USA

NAM: +1 832 280 8685

[sales@capvidia.com](mailto:sales@capvidia.com)  
[www.capvidia.com](http://www.capvidia.com)



The SOLIDWORKS plug-in CATIA V5 to SOLIDWORKS is the most popular CAD data exchange solution provided by Datakit and is certified "Gold Product". It is a plug-in for SOLIDWORKS, allowing you to import CATIA V5 files (.CATPart, .CATProduct). It imports parts, assemblies, metadata, features tree, PMI.



### **Datakit** **CrossCad/Plg: CATIA** **V5 3D to SOLIDWORKS**

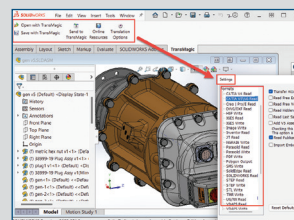
99, rue de Gerland  
Lyon, 69007  
France

EMEA: +33 4 78 39 63 96

[solutions@datakit.com](mailto:solutions@datakit.com)  
[www.datakit.com](http://www.datakit.com)



Add the Power of TransMagic right into SOLIDWORKS to read all major 3D CAD file formats; translate data with confidence using high-quality, state-of-the-art data conversion, perfected over 21 years of development to become an industry standard. Automatic data repair to stitch models together into water-tight solids. Over 200 translation options allow you to fine-tune the geometry you read and write. Products are updated frequently to deliver the newest file format compatibility. All this right from the comfort of your SOLIDWORKS interface.



### **TransMagic, Inc.** **TransMagic PowerPack** **for SOLIDWORKS**

P.O. Box 350759  
Westminster, CO 80035  
USA

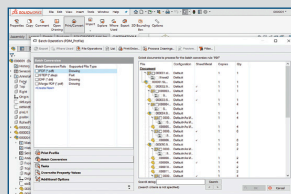
NAM: +1 303 460 1406

[info@transmagic.com](mailto:info@transmagic.com)  
[www.transmagic.com](http://www.transmagic.com)

## CERTIFIED GOLD PRODUCTS – DESIGN/DRAFTING



Focus on design, automate the rest. CUSTOMTOOLS offers a suite of time-saving tools that will help you to be more productive and bring consistency to your design team in a flexible way. CUSTOMTOOLS optimizes how you manage your SOLIDWORKS data, making it more reliable and usable.



### ATR Soft Oy CUSTOMTOOLS

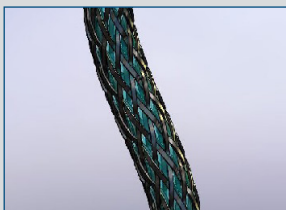
Joukahaisenkatu 1  
20520 TURKU  
Finland

EMEA: +358 20 712 9620

[info@customtools.info](mailto:info@customtools.info)  
[www.customtools.info](http://www.customtools.info)



GW3D consists of over 500 functions that can be used in SOLIDWORKS. G3 Continuity creates blended surfaces and curves with a constant rate of change of curvature. Spine-driven entities allow additional control over the creation of sweep surfaces, blended surfaces, and offset curves.



### CAD/CAM Components GeometryWorks3D

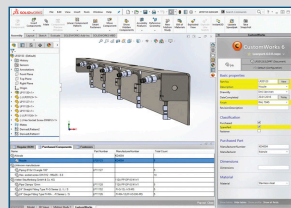
31878 Del Obispo #118-332  
San Juan Capistrano, CA 92675  
USA

NAM: +1 949 728 1309

[bob\\_jones@cadcamcomponents.com](mailto:bob_jones@cadcamcomponents.com)  
[www.cadcamcomponents.com](http://www.cadcamcomponents.com)



CustomWorks is a customizable and powerful metadata automation tool for every company using SOLIDWORKS 3D CAD. It is fast and easy to use, and your company-specific user interface is directly inside the Task Pane. It is also easy to configure, with a fully graphical user interface.



### CadWorks Software Oy Ltd. CustomWorks®

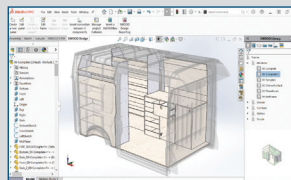
Myllytie 1  
Järvenpää, 04430  
Finland

EMEA: +358 10 835 7311

[info@cadworkssoftware.com](mailto:info@cadworkssoftware.com)  
[www.cadworkssoftware.com](http://www.cadworkssoftware.com)



Design furniture and cabinets with SWOOD Design software in a 3D CAD environment with its parametric features integrated within SOLIDWORKS.



### EFICAD SWOOD Design

Espace H2O, 55,  
Avenue de Melgueil,  
La Grand Motte, 34280,  
France

EMEA: +33 4 67 63 72 65

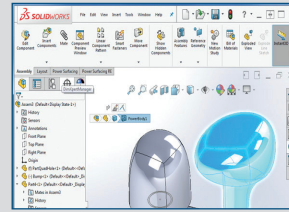
[eficad@eficad.com](mailto:eficad@eficad.com)  
[www.swood.eficad.com](http://www.swood.eficad.com)



## CERTIFIED GOLD PRODUCTS – DESIGN/DRAFTING

### Power Surfacing

Power Surfacing is the ideal SOLIDWORKS solution for industrial design/freeform organic surface/solids modeling. Creates high-quality class A surfaces by default. Tightly integrated with SOLIDWORKS, it works with all SOLIDWORKS commands. Reverse Engineer scanned meshes with Power Surfacing RE.

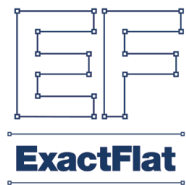


### **nPower Software** **Power Surfacing**

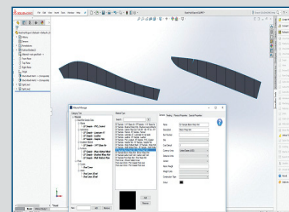
13064 Trail Dust Avenue  
San Diego, CA 92129  
USA

NAM: +1 858 592 8866

[dgill@npowersoftware.com](mailto:dgill@npowersoftware.com)  
[www.npowersoftware.com](http://www.npowersoftware.com)



ExactFlat Pro extends the capabilities of SOLIDWORKS to automate the design and development of products covered in fabrics and made from composites to increase productivity and profitability.



### **Tri-D Technologies, Inc.** **ExactFlat Pro**

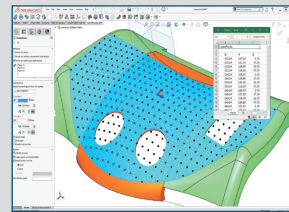
3250 Bloor Street West  
6th Floor  
Toronto, Ontario M8X 2X9  
Canada

NAM: +1 877 977 7776

[sales@exactflat.com](mailto:sales@exactflat.com)  
[www.exactflat.com](http://www.exactflat.com)

### visiativ

myCADtools is a software suite consisting of more than 50 utilities fully integrated with SOLIDWORKS. myCADtools helps users in their design work, organization, project management, and exchanges within their business or with their partners.



### **Visiativ** **myCADtools**

26, Rue Benoit Bennier  
Charbonnières-les-Bains,  
69260  
France

EMEA: +33 4 78 87 29 29

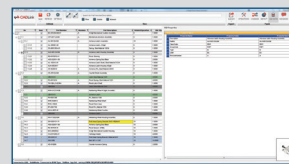
[info@visiativ.com](mailto:info@visiativ.com)  
[www.visiativ.com](http://www.visiativ.com)

## CERTIFIED GOLD PRODUCTS – ERP



by  
**QBuild**  
CAD ERP INTEGRATION

CADLink is a turnkey system designed to tightly connect our customers' SOLIDWORKS data to their ERP system. It allows engineering designers to view, modify, update, and create ERP engineering information such as Bill of Materials (BOM) and Item Master data without ever leaving SOLIDWORKS.



### **QBuild Corporation** **CADLink for SOLIDWORKS**

210 Telson Rd  
Markham, ON L3R 1E6  
Canada

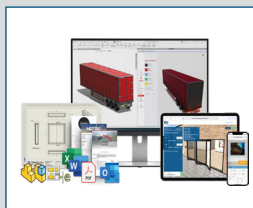
NAM: +1 905 479 7811 ext. 224

[info@qbuildsoftware.com](mailto:info@qbuildsoftware.com)  
[www.qbuildsoftware.com](http://www.qbuildsoftware.com)

## CERTIFIED GOLD PRODUCTS – KBE DESIGN/AUTOMATION



Configure, design, sell, and manufacture custom products faster. DriveWorks technology enables you to accurately configure custom products, calculate pricing, and automatically create documents and data for sales and manufacturing, including SOLIDWORKS parts, assemblies and drawings. Explore examples at [www.driveworkslive.com](http://www.driveworkslive.com)



### DriveWorks Ltd. DriveWorks Pro

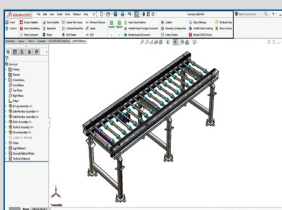
The Barley Store - Laskey Lane  
Thelwall, Cheshire WA4 2TF  
United Kingdom

EMEA: +44 19 2575 7585  
NAM: +1 978 633 3230

[sales@driveworks.co.uk](mailto:sales@driveworks.co.uk)  
[www.driveworks.co.uk](http://www.driveworks.co.uk)



CADECplus is a programming-less configurator add-in to SOLIDWORKS. It features an easy-to-use interface for capturing design rules of machines and equipment. CADECplus is available as Configurator (for champion designer) and Creator (for end-user).



### Mark Design Solutions Pvt. Ltd. CADECplus

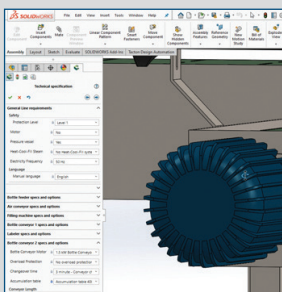
202 Akshay Landmark, Opp P L  
Deshpande Garden 545/5 Sinhgad  
Road, Dattawadi Pune, Maharashtra  
411030 India

APAC: +91 9822 556218

[info@markengg.com](mailto:info@markengg.com)  
[www.cadec.in](http://www.cadec.in)



Tacton Design Automation provides rule-based engineer-to-order automation inside SOLIDWORKS. With a high level of interactivity and ease of use and maintenance, engineers can easily configure designs of complex products and automatically generate complete 2D drawings, 3D models, and quote documents.



### Tacton Tacton Design Automation

Klara Norra Kyrkogata 33  
SE-111 22 Stockholm  
Sweden

EU: +46 8 690 07 50  
08:00 – 17:00 CET  
NA: +1 312 721 1099  
8:00 AM – 6:00 PM CST

[info@tacton.com](mailto:info@tacton.com)  
[www.tacton.com](http://www.tacton.com)

## CERTIFIED GOLD PRODUCTS – MOLD AND DIE DESIGN



3DQuickPress is a SOLIDWORKS add-in for progressive die design. Powerful unfold for imported parts, user-friendly strip layout manager, automatic die set design, and production-ready-libraries make 3DQuickPress the best user experience in stamping tool design.



### 3D QuickTools Ltd. 3DQuickPress

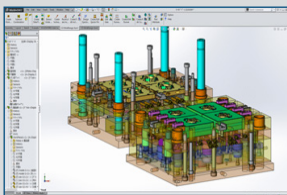
Unit V26, Flat A, 5/F., Victory Industrial Building 151-157 Wo Yi Hop Road  
Kwai Chung, N.T. 999077  
Hong Kong, China

APAC: +852 2788 2832

[info@3dquicktools.com](mailto:info@3dquicktools.com)  
[www.3dquicktools.com](http://www.3dquicktools.com)



CG MoldDesign is a perfect tool that totally supports processes from mold design to drawing creation. It also has on-board standard parts for Mold design, customized data structure, and on-demand standardization is available. Be sure to check out C&G's other product: CG PressDesign



### C&G SYSTEMS, Inc. MoldDesign

Tennoz Central Tower 19F  
2-2-24 Higashi-Shinagawa,  
Shinagawa-ku Tokyo,  
TOKYO 140-0002  
Japan

APAC: +81 3 6864 0784

[info\\_cg\\_camtool@cgsys.co.jp](mailto:info_cg_camtool@cgsys.co.jp)  
[www.cgsys.co.jp/en/index.html](http://www.cgsys.co.jp/en/index.html)



LogoPress DieDesign software automates many aspects of die design, from unbending and flattening—even "dirty" parts—to strip layout, tool design, and drawings. The included die kinematic simulation even allows the die to be simulated and interference checked as if it was operating in the press. LogoPress ProgSim can be added to perform the forming simulation.



### LogoPress LogoPress DieDesign

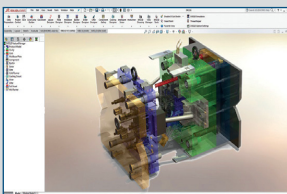
ZA Les Salines  
Pouilly Les Vignes, 25115  
France

EMEA: +33 3 81 60 23 60

[info@logopress.com](mailto:info@logopress.com)  
[www.logopress.com](http://www.logopress.com)



IMOLD for SOLIDWORKS leverages the SOLIDWORKS environment to provide mold designers with the most powerful and complete product. Process-oriented flow enables creation of preliminary and production designs quickly and easily. See the difference a complete and integrated mold engineering solution can make.



### Manusoft Technologies Pte Ltd. IMOLD for SOLIDWORKS

1 Cleantech Loop,  
#02-25A CleanTech One  
Singapore 637141  
Singapore

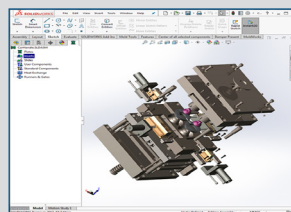
APAC: +65 6775 1565

[info@imold.com](mailto:info@imold.com)  
[www.imold.com](http://www.imold.com)

## CERTIFIED GOLD PRODUCTS – MOLD AND DIE DESIGN



ElectrodeWorks designs electrodes with just a few mouse clicks. One dialogue creates both simple and complex shapes including face extrusion and Boolean extraction, automatic geometry selection, sizing, and hole filling when needed. Automatic EDM and manufacturing drawings and output to EDM machines.



Be sure to check out R&B Mold & Die Design's other products: MoldWorks and SplitWorks.

### R&B Mold & Die Design ElectrodeWorks

32 Beit Guvrin Str.  
PO Box 1409  
Ramat Hasharon, 4711301  
Israel

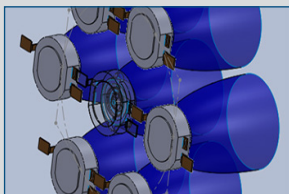
EMEA: +972 3 923 3522  
NAM: +1 800 844 3589

[marketing@rnb.co.il](mailto:marketing@rnb.co.il)  
[www.rnbusa.com](http://www.rnbusa.com)

## CERTIFIED GOLD PRODUCTS – OPTICAL DESIGN AND ANALYSIS



Available as an add-in to the SOLIDWORKS 3D-modeling environment, APEX® has been developed for the design and analysis of optical and illumination systems using an easy-to-follow workflow. APEX delivers powerful optical software tools in a true CAD interface.



### Breault Research Organization APEX

2175 E. Valencia Road  
Suite 105  
Tucson, AZ 85706  
USA

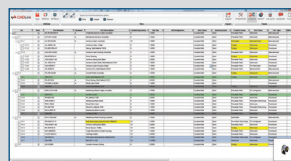
NAM: +1 520 721 0500

[info@breault.com](mailto:info@breault.com)  
[www.breault.com](http://www.breault.com)

## CERTIFIED GOLD PRODUCTS – PDM



CADLink is a turnkey system designed to tightly connect our customers' design data in PDM to their ERP. It allows engineering designers to view, modify, update, and create ERP engineering information such as Bill of Materials (BOM) and Item Master data without ever leaving PDM Professional.



### QBuild Corporation CADLink for PDM Professional

210 Telson Rd  
Markham, ON L3R 1E6  
Canada

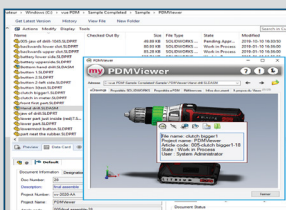
NAM: +1 905 479 7811

[info@qbuildsoftware.com](mailto:info@qbuildsoftware.com)  
[www.qbuildsoftware.com](http://www.qbuildsoftware.com)

## CERTIFIED GOLD PRODUCTS – PDM



Increase the power of SOLIDWORKS PDM Professional! myPDMtools enables you to adapt SOLIDWORKS PDM Professional to your work methods, automate recurring tasks, and improve your efficiency thanks to many additional features.



### Visiativ myPDMTools

26, Rue Benoit Bennier  
Charbonnières-les-Bains, 69260  
France

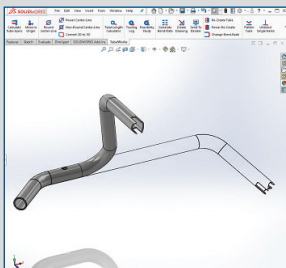
EMEA: +33 9 69 32 22 23

[info@visiativ.com](mailto:info@visiativ.com)  
[www.visiativ.com](http://www.visiativ.com)

## CERTIFIED GOLD PRODUCTS – PIPE AND TUBE BENDING

### TUBEWORKS

TubeWorks add-in extracts key manufacturing information from native and imported (STEP, IGES, ParaSolid) tubes. Features include automatic generation of CNC bend data with 2D Drawings and unbent configuration for tube laser.



### Innovative Tube Equipment Corporation TubeWorks

PO Box 4865  
Austin, TX 78765  
USA

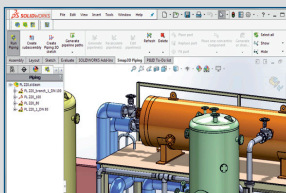
NAM: +1 512 642 8823

[sales@tubeworkssoftware.com](mailto:sales@tubeworkssoftware.com)  
[www.tubeworkssoftware.com](http://www.tubeworkssoftware.com)

## CERTIFIED GOLD PRODUCTS – PLANT DESIGN



Smap3D Plant Design is a proven software for 2D/3D plant and pipeline planning, fully integrated with SOLIDWORKS. It covers the whole process from P&ID to Piping to Isometrics. In addition, modules for 3D laser scan, steelwork, stress, and bending simulation, as well as pipe fabrication, are available.



### Smap3D Plant Design Smap3D Plant Design

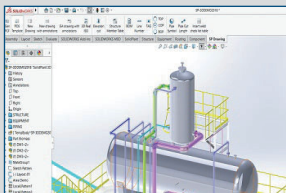
260 Arbor Springs N Dr.  
Newnan, GA 30265  
USA

NAM: +1 408 484 6404

[info@smap3d.com](mailto:info@smap3d.com)  
[www.smap3d.com](http://www.smap3d.com)



SolidPlant is a sophisticated plant design solution for SOLIDWORKS. SolidPlant 3D contains an extensive set of manufacturer catalogs of pipe components, pumps, valves, gaskets, etc., driven by a Structured Query Language (SQL) Server database that allows specifications to be picked/created.



### SolidPlant B.V. SolidPlant 3D

Singel 540, Amsterdam  
N-Holland 1017AZ  
The Netherlands

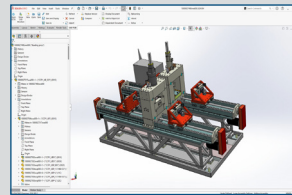
EMEA: +31 20 8941393

[arno@solidplant3d.com](mailto:arno@solidplant3d.com)  
[www.solidplant3d.com](http://www.solidplant3d.com)

## CERTIFIED GOLD PRODUCTS – PLM INTEGRATION



Manage SOLIDWORKS data in SAP with a fully configurable user interface which allows for management of CAD structures and PLM objects, including original and neutral files. Execute SAP functions from SOLIDWORKS and manage product information stored in SAP for enterprise-wide collaboration.



**CIDEON Software & Services  
GmbH & Co. KG**  
**SAP PLM Integration  
for SOLIDWORKS**

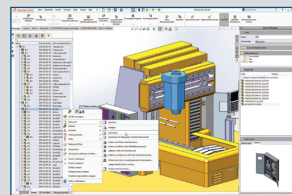
Lochhamer Schlag 11  
82166 Gräfelfing  
Germany

EMEA: +49 89 9090030

[info@cideon.com](mailto:info@cideon.com)  
[www.cideon.com](http://www.cideon.com)



Porta-X is a connector between SOLIDWORKS and SAP (R/3 und S/4 HANA). It allows you to store your SOLIDWORKS models, assemblies, and drawings directly in a SAP Content Server. It also generates SAP Bills of Materials (BOMS) directly from SolidWorks assembly structures or drawings with a mouse click.



**HCV Data Management  
GmbH**  
**Porta-X**

Am Eichelgarten 1  
Walluf, Hessen 65396  
Germany

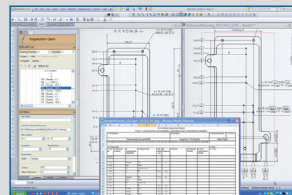
EMEA: +49 6123 99 50-115

[info@hcv.de](mailto:info@hcv.de)  
[www.hcv.de](http://www.hcv.de)

## CERTIFIED GOLD PRODUCTS – REVERSE ENGINEERING AND INSPECTION



Designed exclusively to support SOLIDWORKS 3D CAD software, Inspection Geni V 3.0 automates the manual inspection process and enables design changes tracking directly in SOLIDWORKS without the use of a PDM, thereby taking SOLIDWORKS software to a whole new dimension.



**Albitech Ltd.**  
**Inspection Geni**

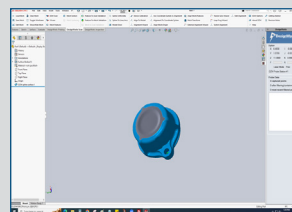
Weinberg 13,  
Kfar Saba, 46385  
Israel

EMEA: +972 5 4771 7258

[dsashkis@albitech.org](mailto:dsashkis@albitech.org)  
[www.inspectiongeni.com](http://www.inspectiongeni.com)



DezignWorks is a cutting-edge design agency specializing in advanced probing and mesh modeling techniques to create precise, data-driven solutions that optimize product design, enhance user experiences, and drive business success.



**Creative Design  
Concepts, Inc.**  
**DezignWorks**

116 Morlake Drive  
Suite 104  
Mooresville, NC 28117  
USA

NAM: +1 704 660 5100

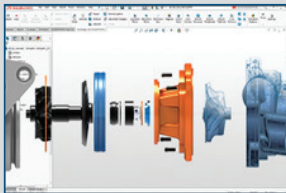
[support@dezignworks.com](mailto:support@dezignworks.com)  
[www.dezignworks.com](http://www.dezignworks.com)



## CERTIFIED GOLD PRODUCTS – REVERSE ENGINEERING AND INSPECTION

# OQTON

Geomagic for SOLIDWORKS is ideal for SOLIDWORKS users looking for a straightforward path from point cloud data or mesh data to a complete SOLIDWORKS design file. Import scan data or scan directly into SOLIDWORKS with supported 3D scanners. A perfect solution for any SOLIDWORKS user to who wants fully editable, native CAD data fast.



**Oqton**  
**Geomagic for SOLIDWORKS**

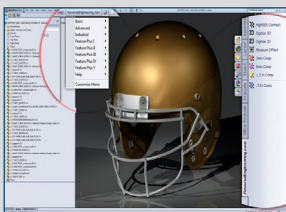
345 California St  
Suite 600  
San Francisco, CA 94104

NAM: +1 803 981 6716

[customersuccessAMS@oqton.com](mailto:customersuccessAMS@oqton.com)  
[www.oqton.com/geomagic-for-solidworks](http://www.oqton.com/geomagic-for-solidworks)



Connect your FARO EDGE HD scan arm or Romer Absolute scan arm to SOLIDWORKS to capture features, point clouds, or mesh data. With the ReverseEngineering.com ADD-IN, you will no longer need multiple software solutions. Simply digitize features, reverse engineer, or inspect directly in SOLIDWORKS.



**ReverseEngineering.com**  
**HighRes Basic, Advanced and Industrial for SOLIDWORKS**

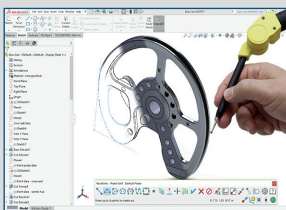
PO Box 2746  
La Jolla, CA 92038  
USA

NAM: +1 858 459 5241

[sales@reverseengineering.com](mailto:sales@reverseengineering.com)  
[www.reverseengineering.com](http://www.reverseengineering.com)



RevWorks, a 27-year Gold Partner product, provides a rich set of reverse engineering tools for quickly capturing difficult-to-model parts directly into SOLIDWORKS. Powerful tools and the CADpad interface make the otherwise tedious effort to create parametric CAD models from complex parts easy. The combination of SOLIDWORKS, RevWorks, and our compact MicroScribe CMM makes effective portable reverse engineering a cost-effective reality.



**Revware, Inc.**  
**RevWorks®**

1645 Old Louisburg Road  
Raleigh, NC 27604  
USA

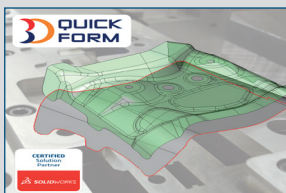
NAM: +1 919 790 0000

[tom.welsh@revware.net](mailto:tom.welsh@revware.net)  
[www.revware.net](http://www.revware.net)

## CERTIFIED GOLD PRODUCTS – SHEET METAL FABRICATION



3DQuickForm is an inverse forming simulation. High speed, accuracy, and full associativity with SOLIDWORKS make 3DQuickForm an efficient production design tool for die designers. Users can import different types of CAD data or build the die geometries in SOLIDWORKS for the forming studies.



**3D QuickTools Ltd.**  
**3DQuickForm**

Unit V26, Flat A, 5/F., Victory Industrial Building 151-157 Wo Yi Hop Road  
Kwai Chung, N.T. 999077  
Hong Kong, China

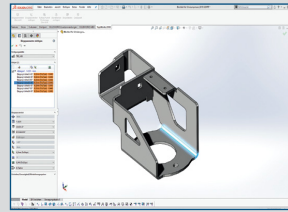
APAC: +852 2788 2832

[info@3dquicktools.com](mailto:info@3dquicktools.com)  
[www.3dquicktools.com](http://www.3dquicktools.com)

## CERTIFIED GOLD PRODUCTS – SHEET METAL FABRICATION

### TOPSWORKS

TopsWorks is a direct interface between SOLIDWORKS sheet metal functionality and TRUMPF bend know-how. TopsWorks ensures high-quality models that take into consideration material, sheet metal thickness, tools used, and other parameters during the design process.



### DPS Software GmbH TopsWorks: Efficiency Tool for the Entire Sheet Metal Process Chain

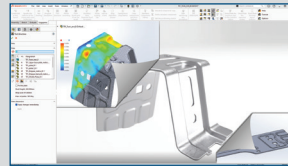
Esslinger Straße 7  
Leinfelden-Echterdingen,  
Baden-Württemberg 70771  
Germany

EMER: +49 711/797310-0

[sales@topsworks.de](mailto:sales@topsworks.de)  
[www.topsworks.com](http://www.topsworks.com)

### LOGOPRESS part of AutoForm Group

LogoPress Flatten offers FEA together with flattening capabilities, helping the designer and/or estimator quickly and easily determine the theoretical blank of a complex 3D-formed part and get stress, strain, thinning, and thickening information. Native models, as well as imported models can be used.



### LogoPress LogoPress Flatten

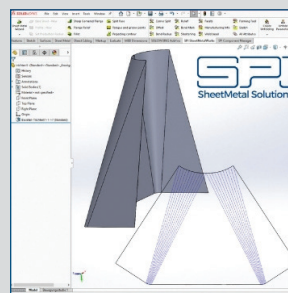
ZA Les Salines  
Pouilley Les Vignes, 25115  
France

EMER: +33 3 81 60 23 60

[info@logopress.com](mailto:info@logopress.com)  
[www.logopress.com](http://www.logopress.com)

### SPI SheetMetal Solutions

SheetMetalWorks is an add-in for companies that use SOLIDWORKS to design sheet metal for bending. SheetMetalWorks speeds up the design process and delivers automated calculations, flawless unfolding of complex parts, easy data transfer to CAM, and more.



### SPI GmbH SheetMetalWorks

Kurt-Fischer-Straße 30a  
22926 Ahrensburg  
Germany

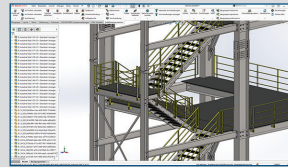
EMER: +49 4102 70 60

[sheetmetal@spi.de](mailto:sheetmetal@spi.de)  
[www.spi.de/en/sheetmetalworks](http://www.spi.de/en/sheetmetalworks)

## CERTIFIED GOLD PRODUCTS – STEEL DESIGN



SolidSteel parametric is a parametric 3D CAD solution for steel design, integrated into SOLIDWORKS by 100%. There are no limits to your creativity. The software is not branch-specific and can be used for classic steelwork, as well as for plant and mechanical engineering.



### **Klietsch GmbH** **SolidSteel parametric**

Königstraße 25  
Siegen, NRW 57078  
Germany

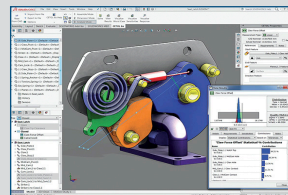
EMEA: +49 271 231670

[solidworks@solidsteel.de](mailto:solidworks@solidsteel.de)  
[www.klietsch.com/solidworks](http://www.klietsch.com/solidworks)

## CERTIFIED GOLD PRODUCTS – TOLERANCE ANALYSIS



CETOL 6 $\sigma$  for SOLIDWORKS is a fully-integrated 3D tolerance analysis solution that enables designers and engineers to understand the impact of part and assembly variation on the fit and performance of their products.



### **Sigmetrix LLC** **CETOL 6 $\sigma$ for SOLIDWORKS**

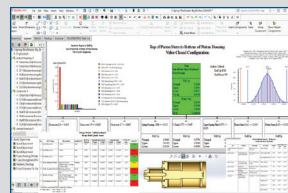
5900 S Lake Forest Dr Suite 400  
McKinney, TX 75070  
USA

NAM: +1 972 542 7517

[aduma@sigmetrix.com](mailto:aduma@sigmetrix.com)  
[www.sigmetrix.com](http://www.sigmetrix.com)



SigmundWorks enables designers and engineers to evaluate, optimize, and validate assembly build quality relative to piece-part tolerance and assembly process variation. Fully integrated within SOLIDWORKS, this value-added tool can be used early in the development phase, preventing costly delays.



### **Varatech, Inc.** **SigmundWorks**

1141 Ambertrace Unit 8  
Holland, MI 49423  
USA

NAM: +1 616 393 6408

[sigmundsolutions@varatech.com](mailto:sigmundsolutions@varatech.com)  
[www.varatech.com](http://www.varatech.com)

---

## Our **3DEXPERIENCE** platform powers our brand applications, serving 12 industries, and provides a rich portfolio of industry solution experiences.

Dassault Systèmes is a catalyst for human progress. We provide business and people with collaborative virtual environments to imagine sustainable innovations. By creating virtual twin experiences of the real world with our **3DEXPERIENCE** platform and applications, our customers can redefine the creation, production and life-cycle-management processes of their offer and thus have a meaningful impact to make the world more sustainable. The beauty of the Experience Economy is that it is a human-centered economy for the benefit of all – consumers, patients and citizens. Dassault Systèmes brings value to more than 300,000 customers of all sizes, in all industries, in more than 150 countries. For more information, visit <http://www.3ds.com>.

