

SOLIDWORKS® EDUCATION/STUDENT 2014-2015 Products Installation Instructions

Preparation

- These installation instructions apply to single-user (non-networks (non-SNL); non-floating) licenses of:
 - SOLIDWORKS Education Edition products: CAD, Electrical and Composer
 - SOLIDWORKS Student Engineering Kit (SEK) products: CAD, Electrical and Composer
 - SOLIDWORKS Student Edition:
- Before proceeding with your SOLIDWORKS installation, please do the following:
 - Verify that your system meets the criteria specified in www.SOLIDWORKS.com/System_Requirements.
 - **SOLIDWORKS 2014-2015 Education and Student products are targeted for use on Windows® 7 and Windows 8 operating systems ONLY. They will not work on Windows XP or Vista.**
 - Uninstall any alpha, beta, or pre-release versions of the SOLIDWORKS software.
 - Back up all SOLIDWORKS files you have created and wish to continue using (e.g. parts, assemblies, and drawings, document templates, sheet formats, library features, form tools, Toolbox parts (as applicable)) before upgrading to SOLIDWORKS.
 - Please note: files you open and save in SOLIDWORKS 2014 cannot be opened in earlier versions.
- To minimize disk space consumed, please consider uninstalling your older SOLIDWORKS products and using a new installation of the new SOLIDWORKS product (Education Edition users may wish to keep an older version). If you uninstall the older version, please be sure to also uninstall Simulation products, along with older versions of eDrawings®, and other products, etc.
- If you wish to move your un-expired license to a new computer, please be sure to transfer your license before uninstalling the software. Please do this as follows:
 - Start SOLIDWORKS, go to Help → Transfer licenses (select all the SOLIDWORKS products when doing this).

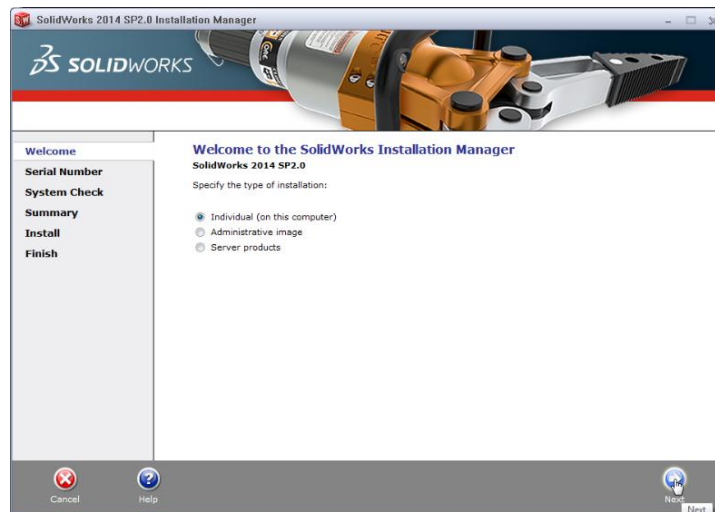
Installation

- Locate your Serial Number(s) from your product package or email from DS-SolidWorks or your school. If you cannot find or you have misplaced your number, contact your local educational reseller to obtain one.
- Serial numbers vary by product type:
 - SOLIDWORKS Education Edition, the number typically begins with 9700 (**Stand Alone**) or 9710 (**Network**)
 - For Network License Installation Instructions select [here](#).
 - SOLIDWORKS Student Engineering Kit (SEK) products: 9020
 - Note: Separate serial numbers are required for CAD, Electrical and Composer products.
 - SOLIDWORKS Student Edition: 9020
 - SOLIDWORKS Student Design Kit: 9020

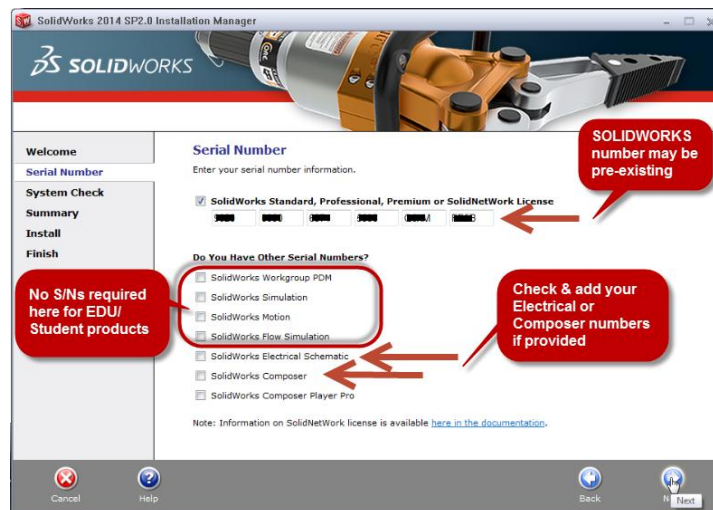
Note: Before beginning the installation, upgrade or add-in product installation process, please be sure to close out of all SOLIDWORKS programs currently open on your computer.

1. **Insert DVD (or select “setup.exe” from your download package).**
The “Welcome to the SOLIDWORKS Installation Manager” window will appear; make sure **Individual (on this computer)** is selected. Select **Next**.

SOLIDWORKS® EDUCATION/STUDENT 2014-2015 Products Installation Instructions



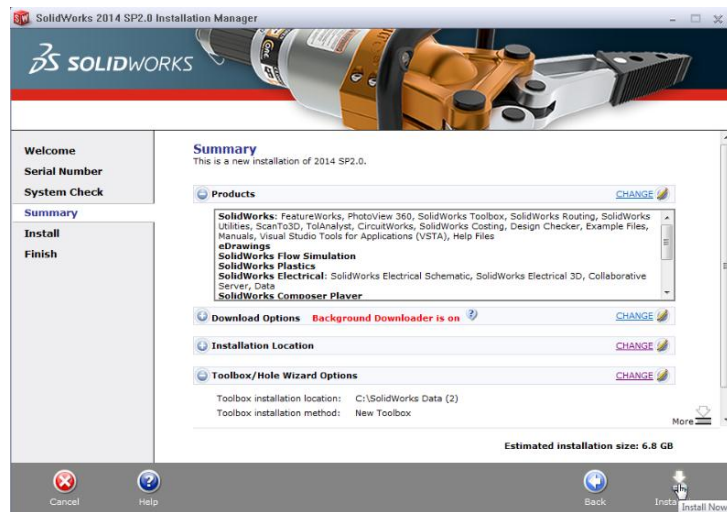
2. Enter your 24 digit serial number(s) that you have received. Select **Next**.



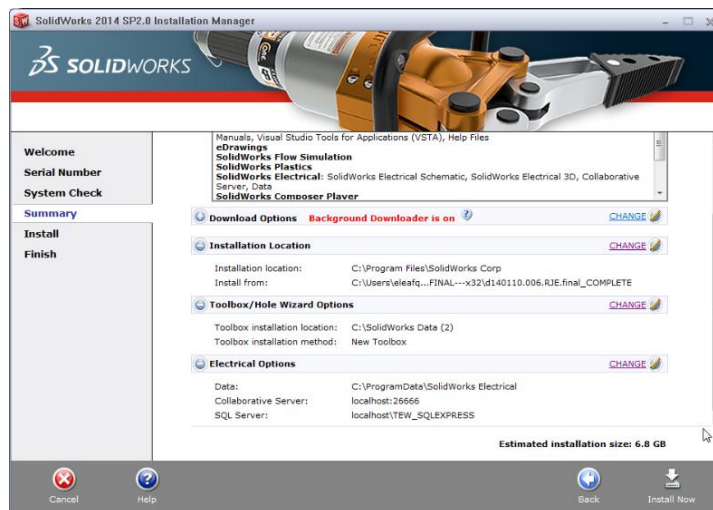
*Note: After you select **Next**, a screen will appear indicating that it is searching for internet and checking serial number.*

3. Once “Connecting to SOLIDWORKS” is complete, a Summary page will appear. It will display the products that are about to be installed and will provide a location to where the products will be installed. We recommend not changing this location. Select **Install Now** to continue.

SOLIDWORKS® EDUCATION/STUDENT 2014-2015 Products Installation Instructions

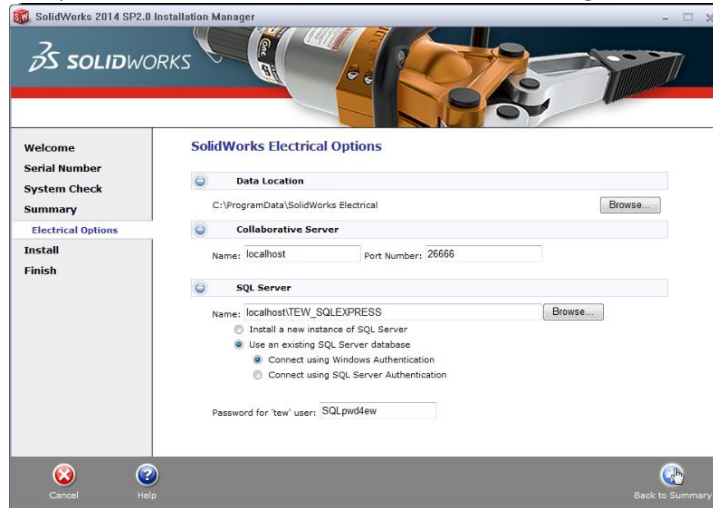


Optional: if you have purchased a license for a SOLIDWORKS Electrical products and have entered a serial number (separate Serial Number for certain Student products only) you will also see the following information (default selections shown).

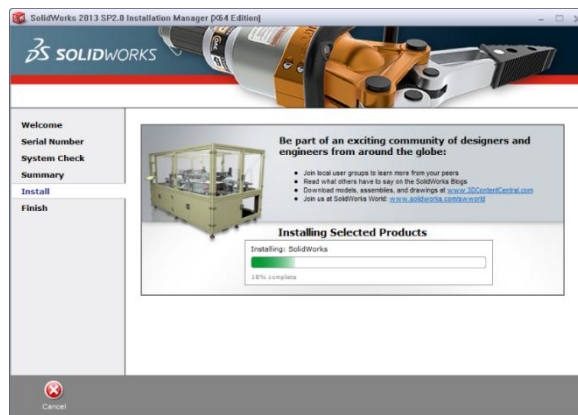


SOLIDWORKS® EDUCATION/STUDENT 2014-2015 Products Installation Instructions

Expand the 'Electrical Options' as desired to check values and setting (default values shown below).



Return 'Back to Summary' then select "Next" to start the installation.



- Installation is Complete!** Make a selection regarding the SOLIDWORKS Customer Experience Program (we recommend participating, as the usage data help us in development), then select **Finish**.



You can now run your SOLIDWORKS EDUCATION/STUDENT product, you will be asked to activate your license within 30 days of first use.